

NE1/4 NE1/4 SEC.24 T.27S. R.6W. W.M.
DOUGLAS COUNTY

REVISED ON
3-6-19

27 6 24AA
ROSEBURG

THIS MAP WAS PREPARED FOR
ASSESSMENT PURPOSE ONLY.

1" = 100'

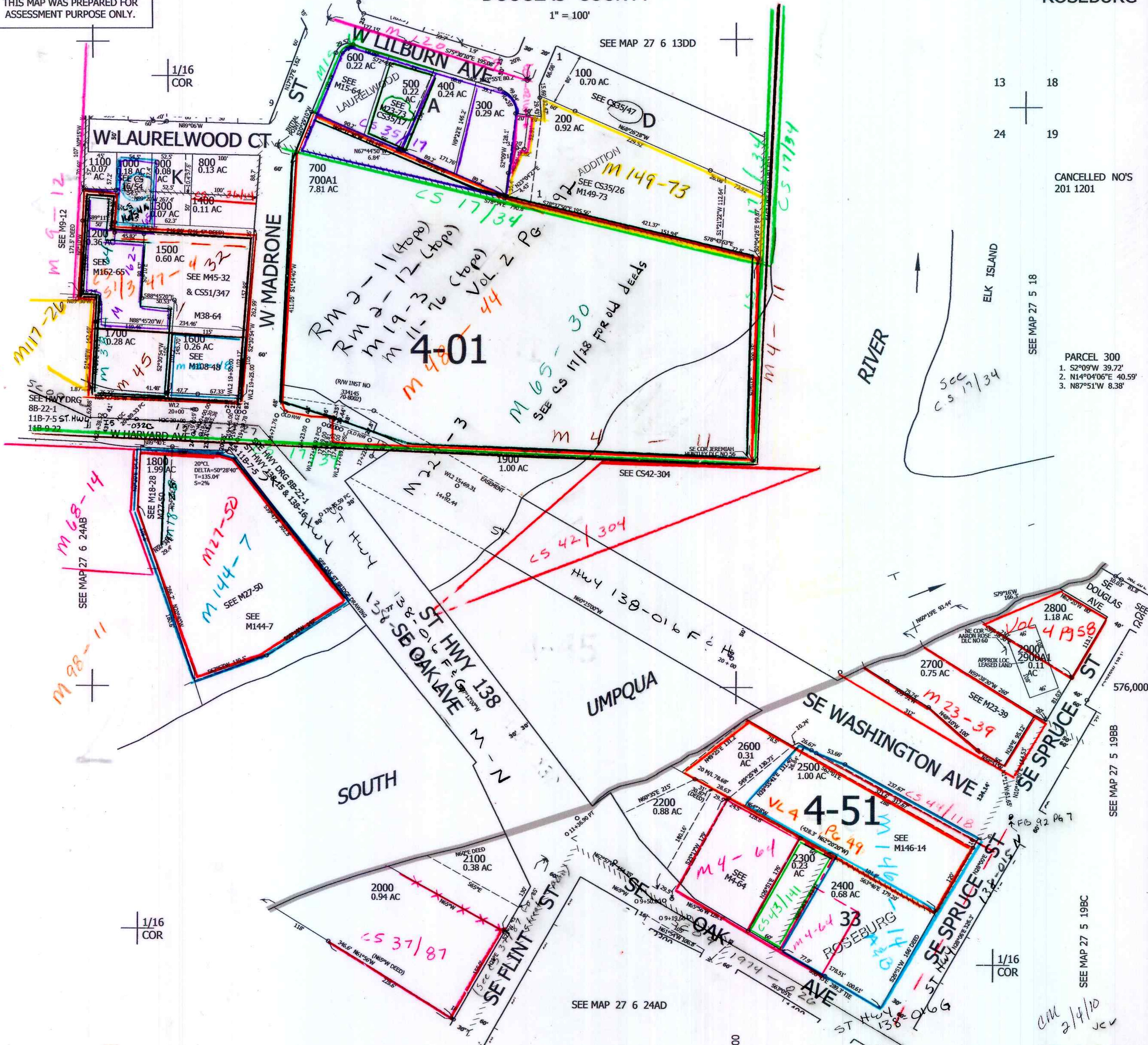
SEE MAP 27 6 13DD

13 18
24 19

CANCELLED NO'S
201 1201

PARCEL 300
1. S2°09'W 39.72'
2. N14°04'06"E 40.59'
3. N87°51'W 8.38'

SEE MAP 27 5 18



1/16
COR

1/16
COR

1/16
COR

SEE MAP 27 5 19BB

27 6 24AA
ROSEBURG

cm
2/4/10
JC