

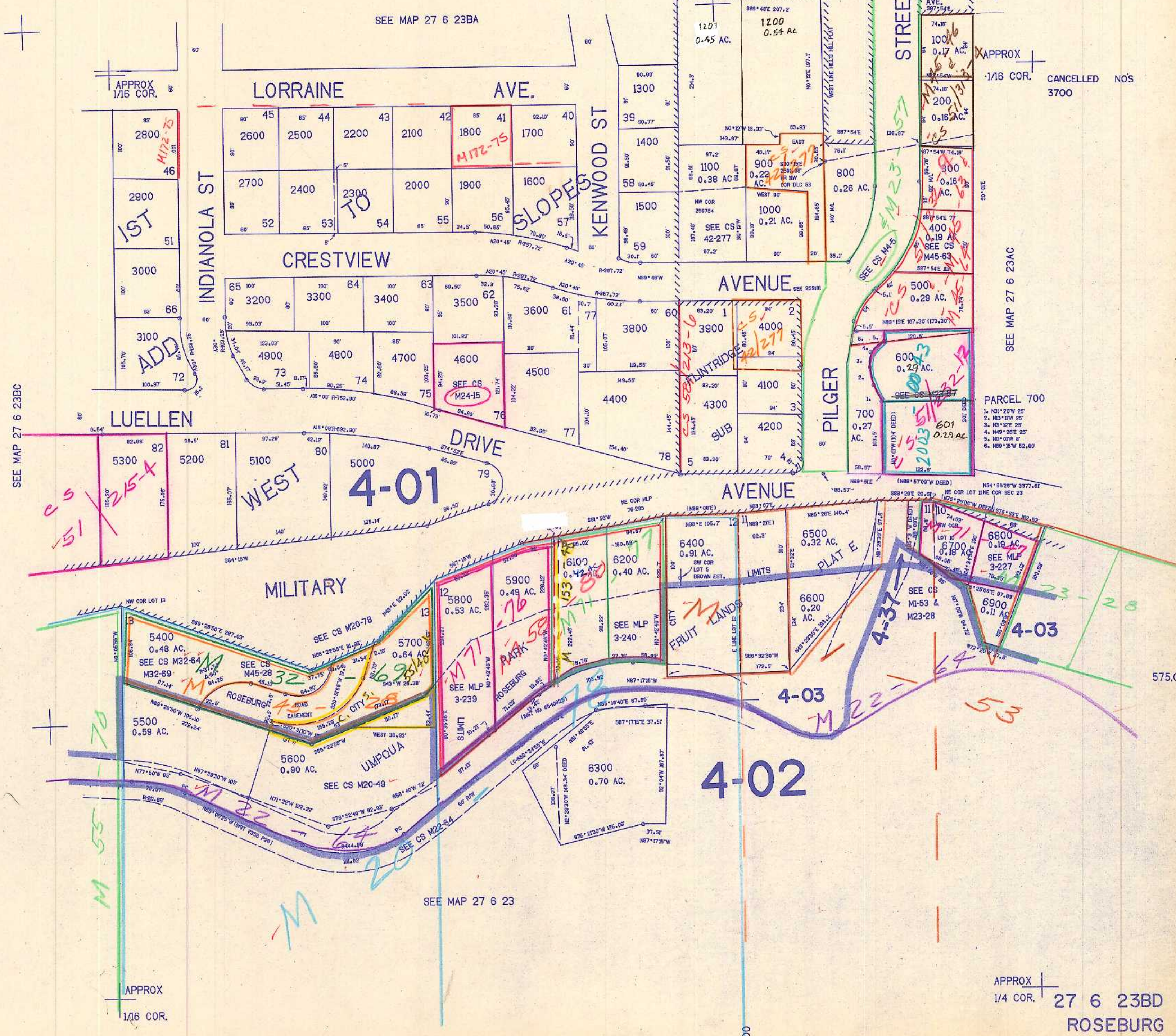
SE1/4 NW1/4 SEC. 23 T.27S. R.6W. W.M.  
DOUGLAS COUNTY

REVISED ON  
1-31-92

27 6 23BD  
ROSEBURG

THIS MAP WAS PREPARED FOR  
ASSESSMENT PURPOSE ONLY.

1"=100'



SEE MAP 27 6 23BC

APPROX  
1/16 COR. CANCELLED NOS  
3700

SEE MAP 27 6 23AC

PARCEL 700  
1. N31°20'W 25'  
2. N3°12'W 25'  
3. N3°22'E 25'  
4. N45°26'E 25'  
5. N0°01'W 8'  
6. N89°15'W 52.60'

APPROX  
1/4 COR. 27 6 23BD  
ROSEBURG

1/92  
2/28