

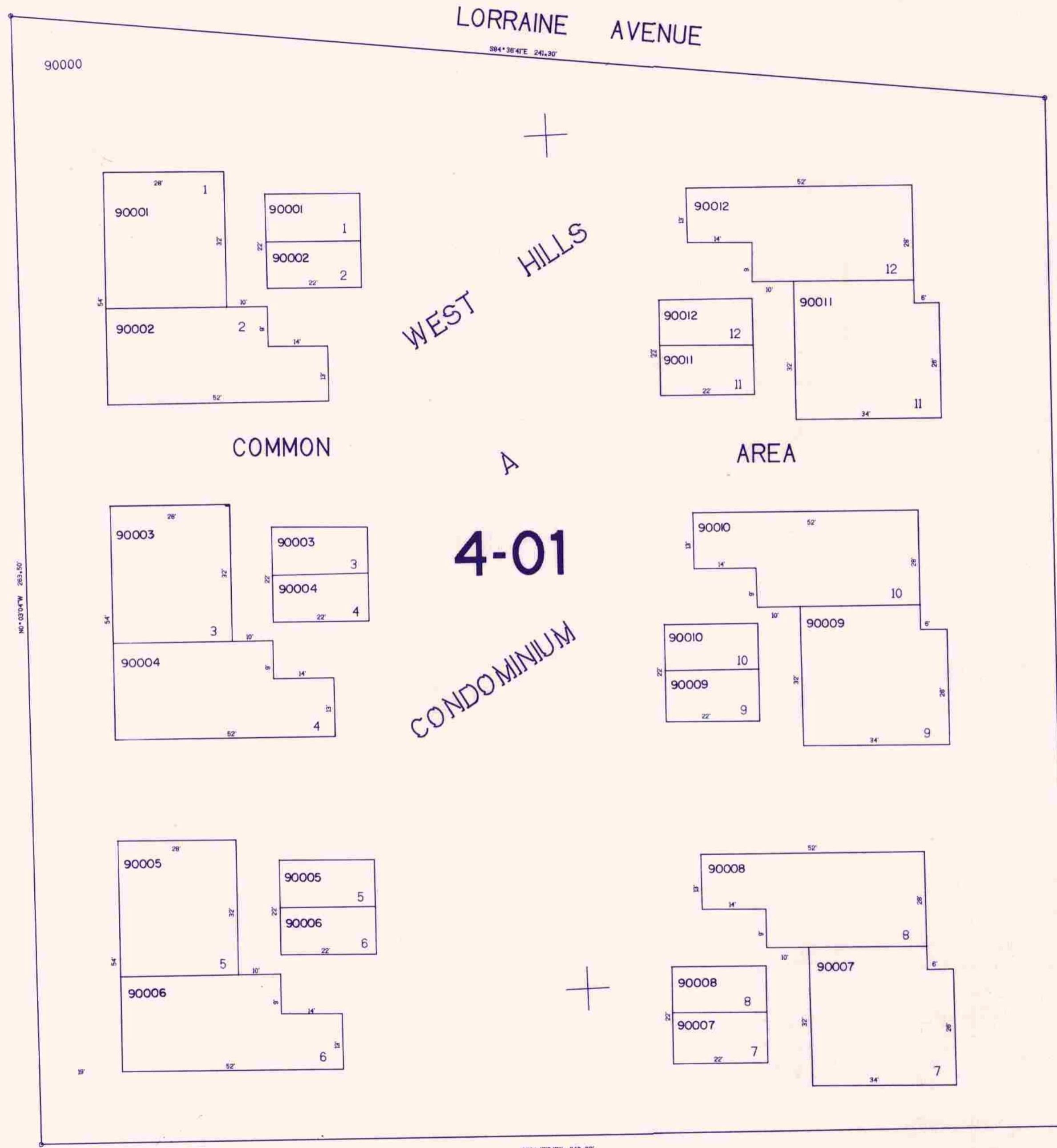
SUPPLEMENTAL SW1/4 NW1/4 SEC. 23 T.27S. R.6W. W.M.
DOUGLAS COUNTY

REVISED ON
6-12-92

27 6 23BC
SUPPLEMENTAL
ROSEBURG

THIS MAP WAS PREPARED FOR
ASSESSMENT PURPOSE ONLY.

1"=20'
SEE MAP 27 6 23BB



SEE MAP 27 6 23

N0° 03' 04" W 263.50'

SW COR., D.L.C. NO. 53
EAST 30' & SOUTH 679.94'

SOUTH 240.00'

SEE MAP 27 6 23BC

S89° 47' 54" W 240.00'

SEE MAP 27 6 23

231.700

27 6 23BC
SUPPLEMENTAL
ROSEBURG

6/92