

NW1/4 NE1/4 SEC. 23 T.27S. R.6W. W.M.  
DOUGLAS COUNTY

27 6 23AB  
ROSEBURG

THIS MAP WAS PREPARED FOR  
ASSESSMENT PURPOSE ONLY.

Cancelled Nos  
200A2 100A1  
500

APPROX  
1/16 COR.

MISS-6A

M 134-36  
2004-0031  
M 125-63  
1990-0026  
A4B

M 100-28  
SEE CS M54-69  
M 54-69

51/233  
4-01

CS  
44/27

SEE MAP 27 6 23BA

SEE CS 58-49

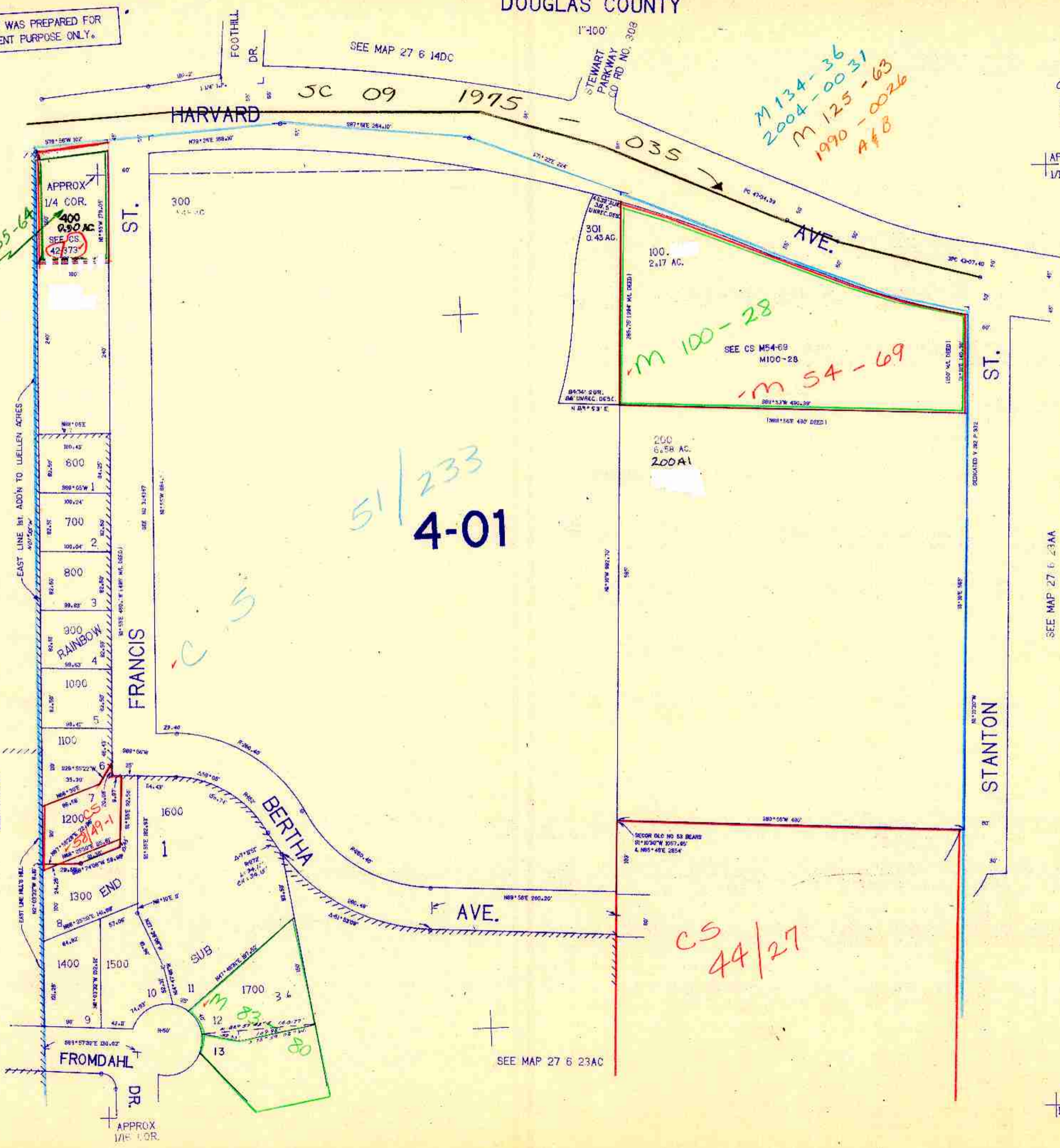
SEE MAP 27 6 23AA

SEE MAP 27 6 23AC

576,000

APPROX  
1/16 COR.

27 6 23AB  
ROSEBURG



3/27/02