

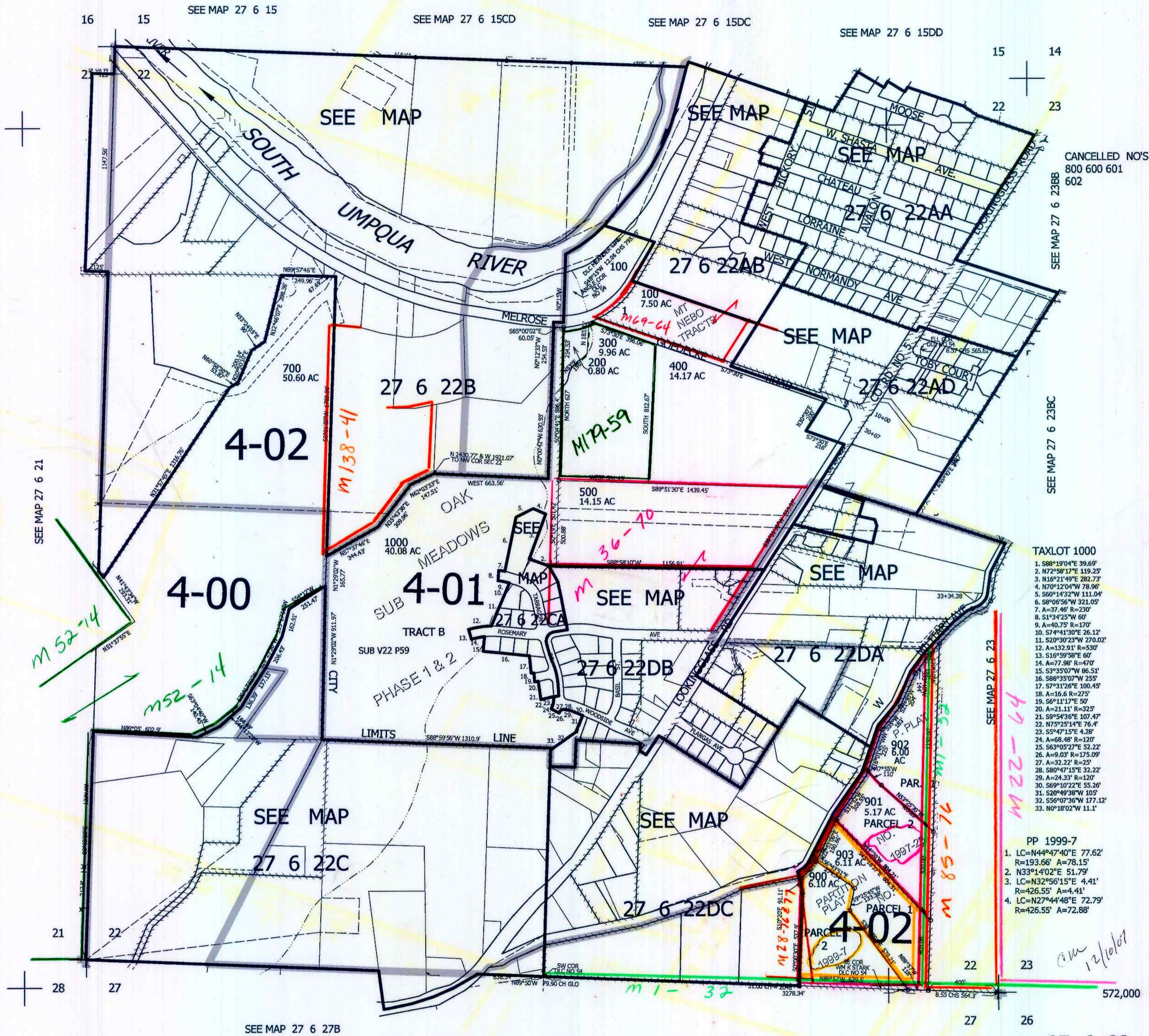
THIS MAP WAS PREPARED FOR ASSESSMENT PURPOSE ONLY.

SEC.22 T.27S. R.6W. W.M.
DOUGLAS COUNTY

REVISED ON
12-6-07

27 6 22
& INDEX
ROSEBURG

1" = 400'



CANCELLED NO'S
800 600 601
602

SEE MAP 27 6 23BB

SEE MAP 27 6 23BC

- TAXLOT 1000
1. S88°19'04"E 39.69'
 2. N72°58'17"E 119.25'
 3. N16°21'49"E 282.73'
 4. N70°12'04"W 78.96'
 5. S60°14'32"W 111.04'
 6. S8°06'56"W 321.05'
 7. A=37.46' R=230'
 8. S1°34'25"W 60'
 9. A=40.75' R=170'
 10. S74°41'30"E 26.12'
 11. S20°30'23"W 270.02'
 12. A=132.91' R=530'
 13. S10°59'58"E 60'
 14. A=77.98' R=470'
 15. S3°35'07"W 86.51'
 16. S86°35'07"W 255'
 17. S7°31'26"E 100.45'
 18. A=16.6 R=275'
 19. S6°11'17"E 50'
 20. A=21.11' R=325'
 21. S9°54'36"E 107.47'
 22. N75°25'14"E 76.4'
 23. S5°47'15"E 4.28'
 24. A=58.48' R=120'
 25. S63°05'27"E 52.22'
 26. A=9.03' R=175.09'
 27. A=32.22' R=25'
 28. S80°47'15"E 32.22'
 29. A=24.33' R=120'
 30. S69°10'22"E 55.26'
 31. S20°49'38"W 105'
 32. S56°07'36"W 177.12'
 33. N0°18'02"W 111.1'

- PP 1999-7
1. LC=N44°47'40"E 77.62'
R=193.66' A=78.15'
 2. N33°14'02"E 51.79'
 3. LC=N32°56'15"E 4.41'
R=426.55' A=4.41'
 4. LC=N27°44'48"E 72.79'
R=426.55' A=72.88'

12/10/07

27 6 22
& INDEX
ROSEBURG

572,000

4,151,000