

THIS MAP WAS PREPARED FOR ASSESSMENT PURPOSE ONLY.

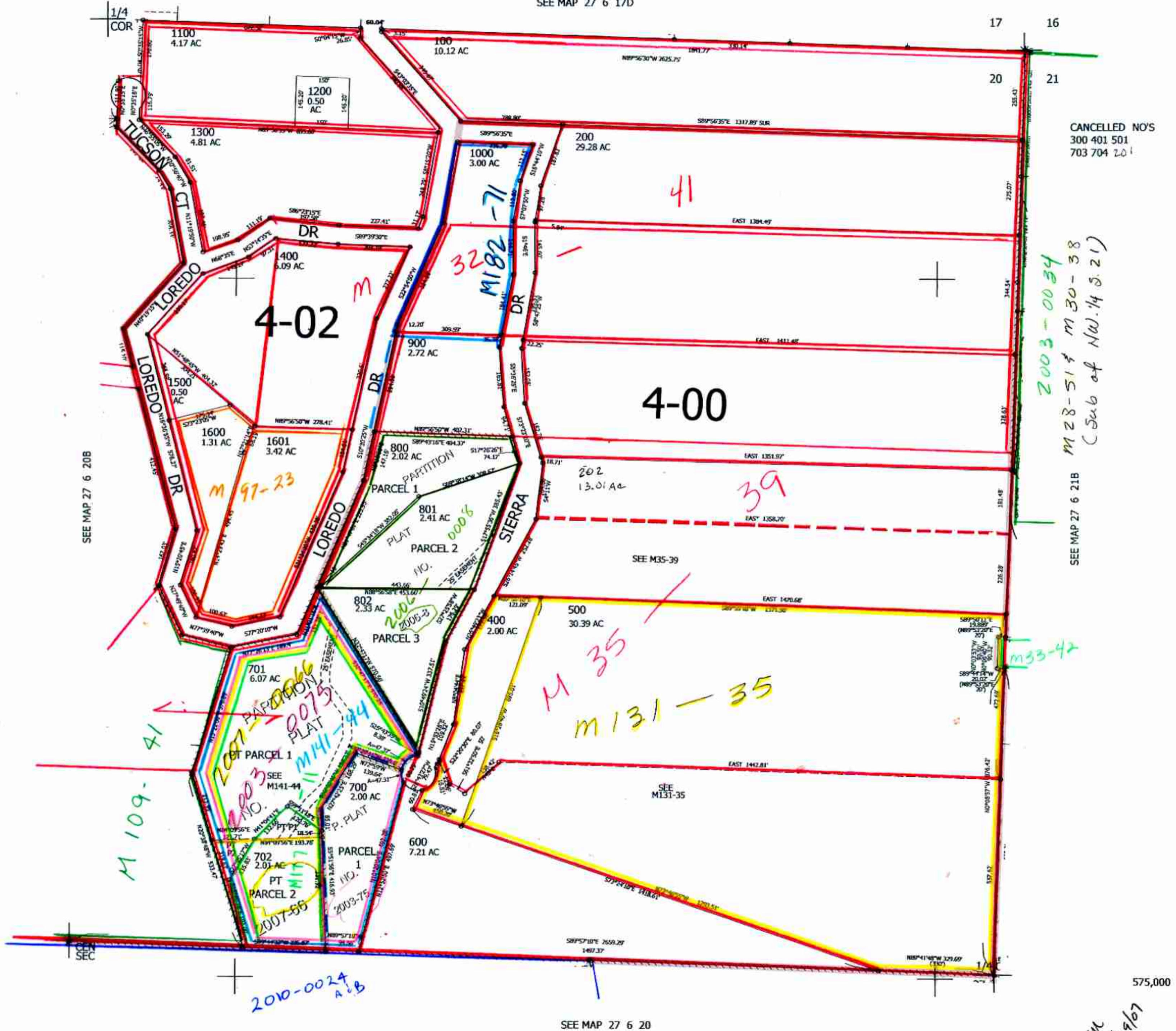
NE1/4 SEC.20 T.27S. R.6W. W.M.  
DOUGLAS COUNTY

REVISED ON  
8-7-19

27 6 20A

1" = 200'

SEE MAP 27 6 17D



CANCELLED NO'S  
300 401 501  
703 704 201

2003-0034  
M 28-51 & M 30-38  
(Sub of NW.1/4 S.21)

SEE MAP 27 6 20B

SEE MAP 27 6 21B

M 33-42

M 109-41

M 35  
M 131-35

2010-0024  
A.B

SEE MAP 27 6 20

575,000

4,141,000

(M  
6/19/07

27 6 20A

scw