

THIS MAP WAS PREPARED FOR ASSESSMENT PURPOSE ONLY.

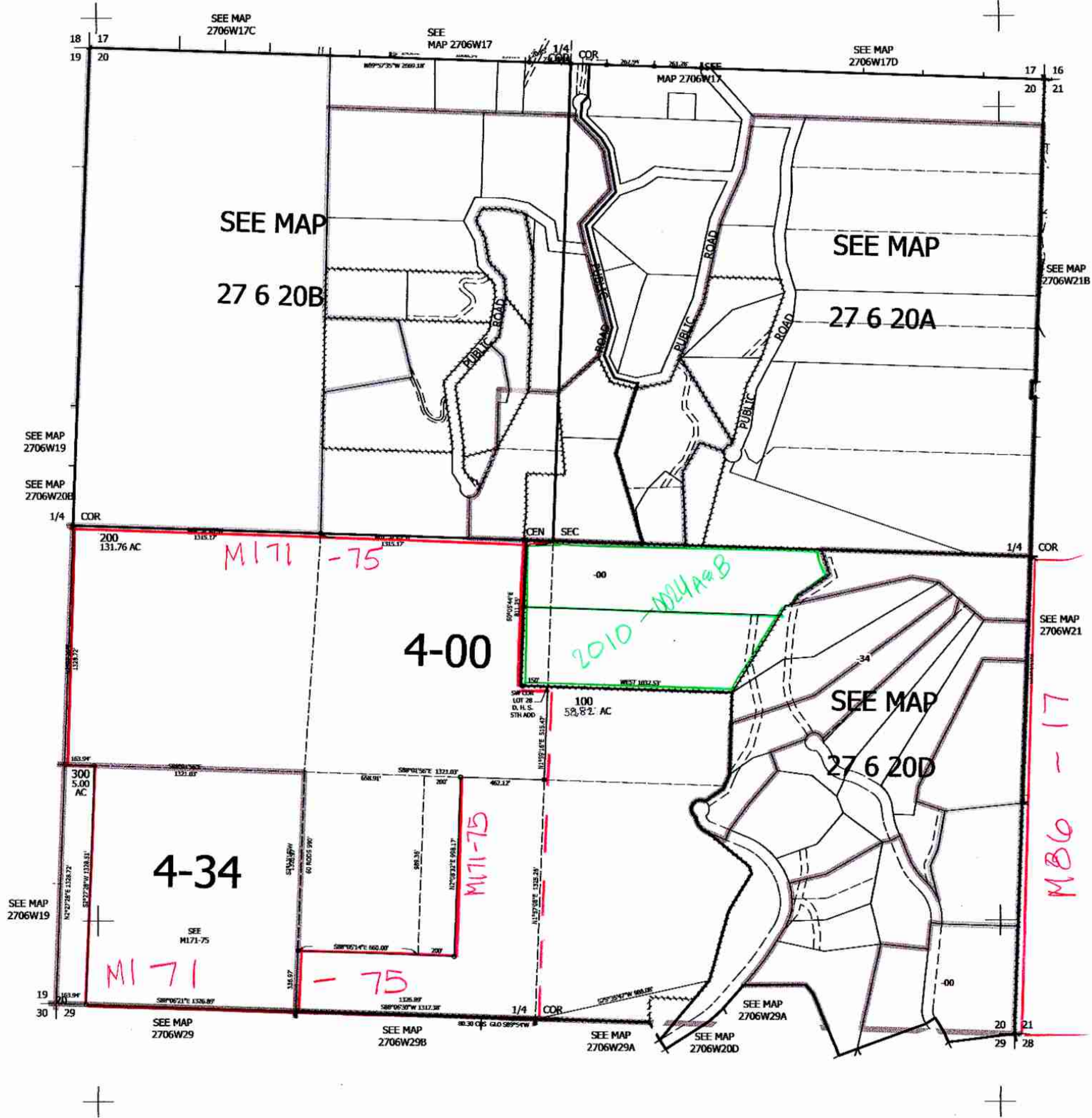
Upper Left:
123°27'6"W 43°12'58"N
4134633E 578592N ft

SEC.20 T.27S. R.06W. W.M.
DOUGLAS COUNTY
1" = 400'

Date Exported: 12/23/2022 8:30 AM

270620 &

CANCELLED NOS:
101 201 202



1/23 B
see