

THIS MAP WAS PREPARED FOR ASSESSMENT PURPOSE ONLY

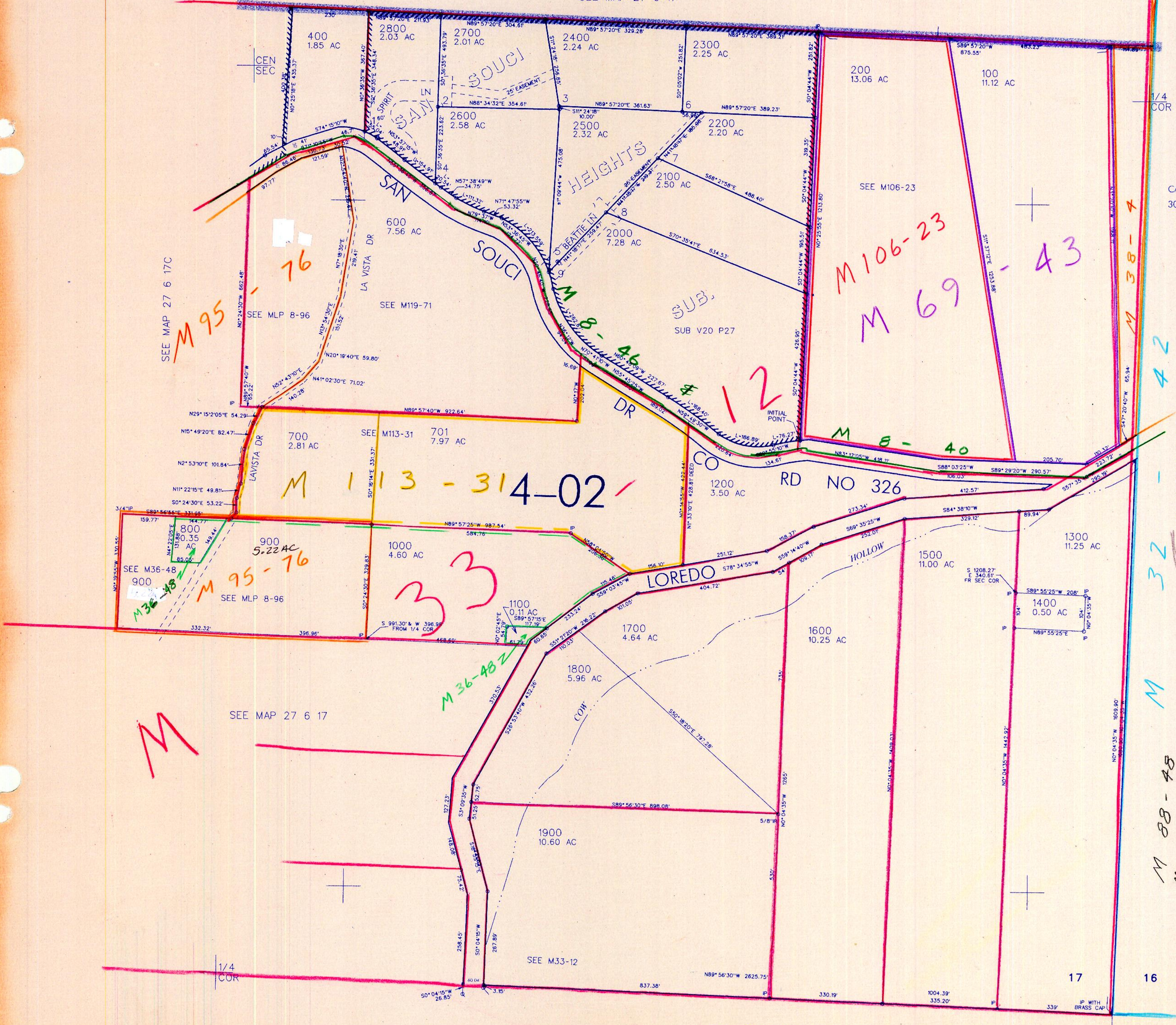
SEV4 SEC. 17 T.27S. R. 6W W.M. DOUGLAS COUNTY

REVISED ON 10-5-00

27 6 17D

1"=200'

SEE MAP 27 6 17



CANCELLED NO'S 300, 500

SEE MAP 27 6 16C

M

578,000

SEE MAP 27 6 20A

4,141,000

20

21

27 6 17D

12/2000 JP

TF