

THIS MAP WAS PREPARED FOR ASSESSMENT PURPOSE ONLY.

NE1/4 SEC.16 T.27S. R.6W. W.M. DOUGLAS COUNTY

1" = 200'

REVISED ON 4-22-15

See CS 17/2A-3 for 1938 Irrigation Filing

27 6 16A & INDEX

SEE MAP 27 6 9D

CANCELLED NO'S 1699 200 101 601 602 701 1502

SEE MAP 27 6 15

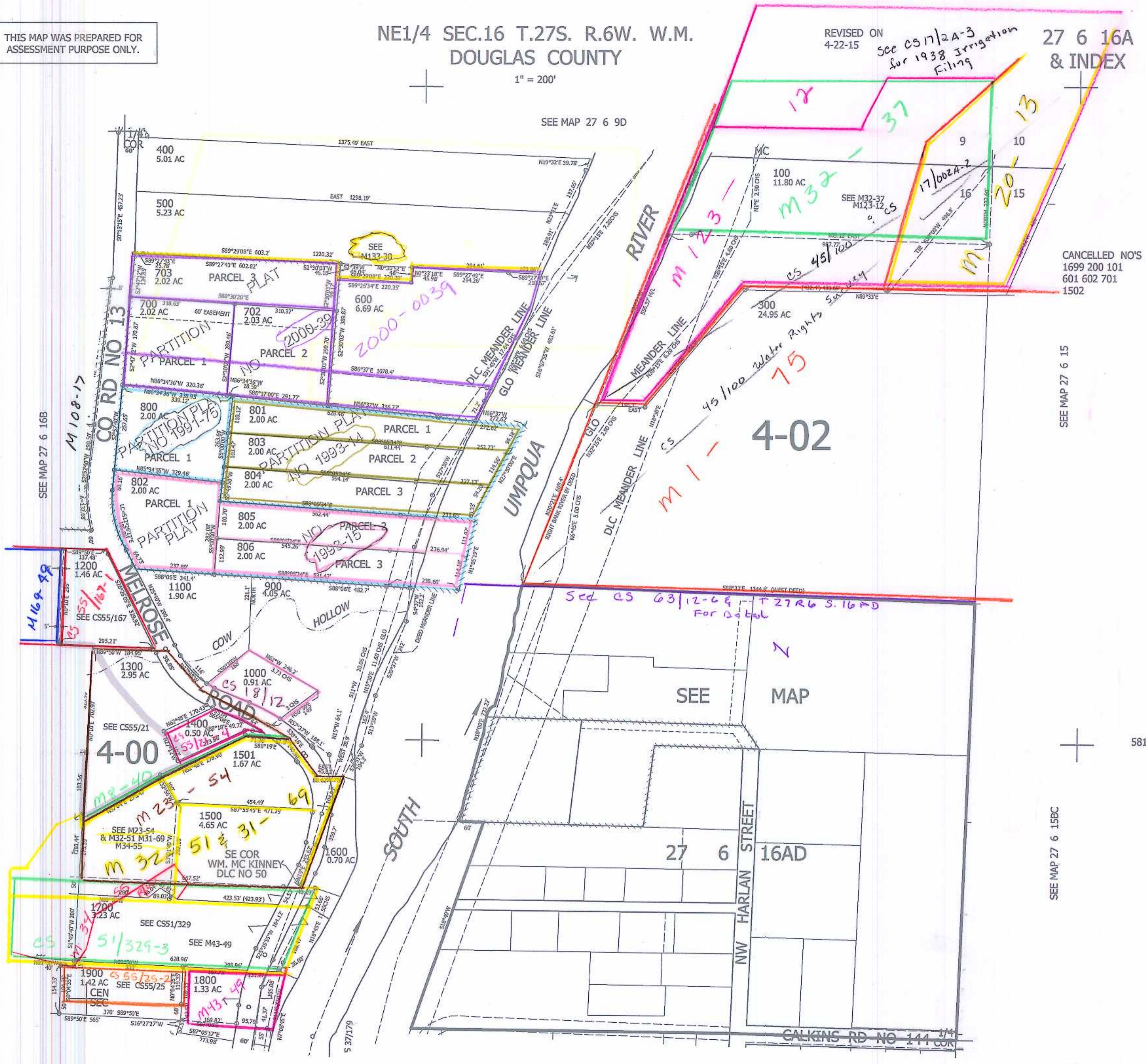
581,000

SEE MAP 27 6 15BC

4,147,000

cm 4/10/08

27 6 16A & INDEX



SEE MAP 27 6 16B

SEE MAP 27 6 16D

SEE MAP 27 6 16DA