

NW1/4 SE1/4 SEC. 15 T.27S. R.6W. W.M.  
DOUGLAS COUNTY

27 6 15DB

THIS MAP WAS PREPARED FOR  
ASSESSMENT PURPOSE ONLY.

1"=100'

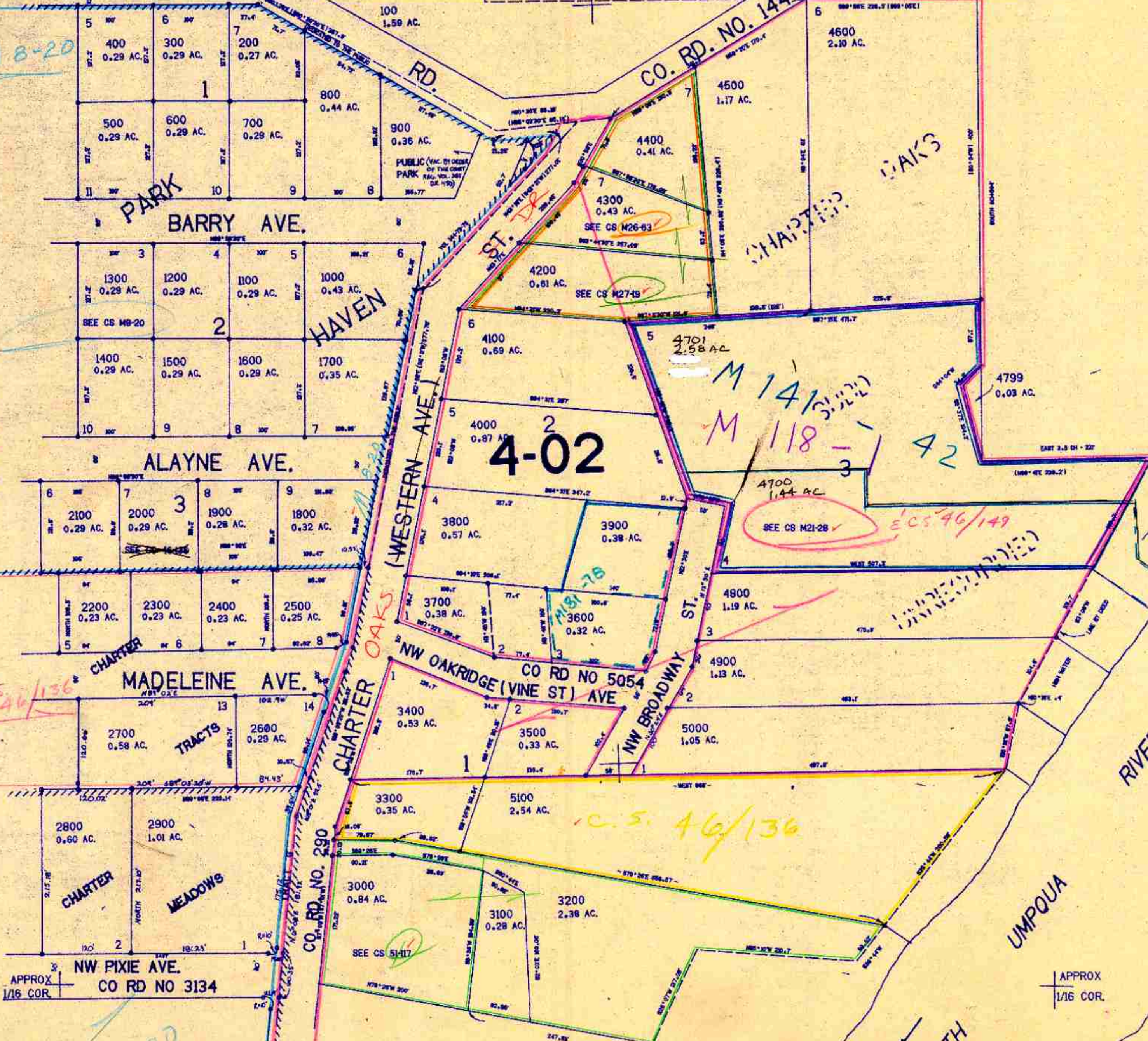
SEE MAP 27 6 15AC

APPROX  
CEN. SEC.

N.W. CALKINS

APPROX  
1/16 COR.

M 8-20



SEE MAP 27 6 15CA

SEE MAP 27 6 15DA

579,000

CHECKED

TRACED

LAYOUT

CONTROL

APPROX  
1/16 COR.

N.W. PIXIE AVE.  
CO RD NO 3134

APPROX  
1/16 COR.

SEE MAP 27 6 15DC

1,228,000

SOUTH

27 6 15DB

5/01  
88