

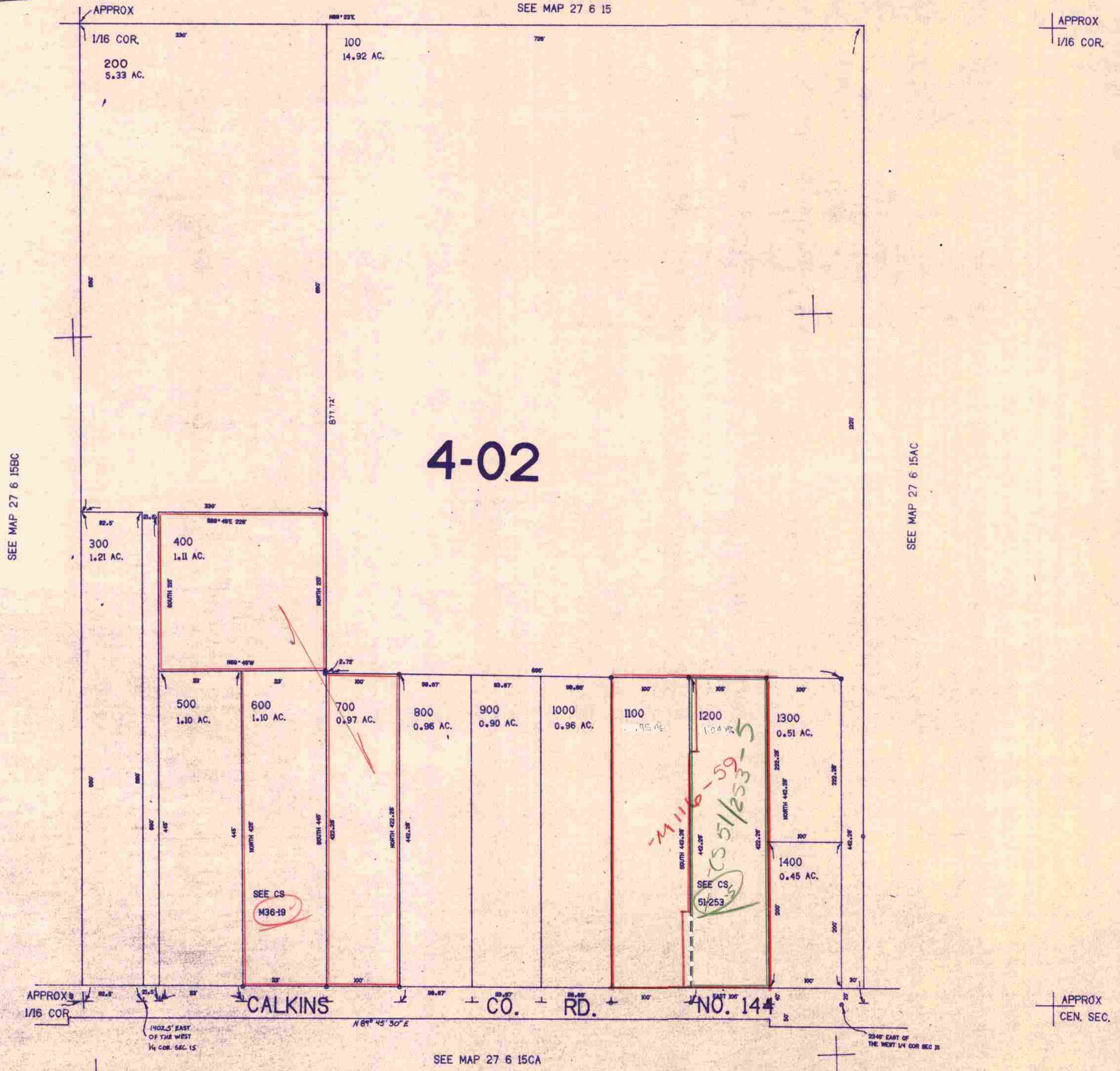
SE1/4 NW1/4 SEC. 15 T.27S. R.6W. W.M.  
DOUGLAS COUNTY

27 6 15BD

1"=100'

SEE MAP 27 6 15

THIS MAP WAS PREPARED FOR  
ASSESSMENT PURPOSE ONLY.



SEE MAP 27 6 15BC

SEE MAP 27 6 15AC

4-02

SEE CS  
M36-19

M 116-59  
SEE CS  
51/253

CALKINS CO. RD. NO. 14

SEE MAP 27 6 15CA

APPROX  
CEN. SEC.

580.000

1,228,000

27 6 15BD

5/81  
BS

CHECKED  
LAYOUT  
CONTROL

CONTROL