

THIS MAP WAS PREPARED FOR ASSESSMENT PURPOSE ONLY.

SW1/4 NE1/4 SEC.15 T.27S. R.6W. W.M. DOUGLAS COUNTY

REVISED ON 4-7-22

27 6 15AC ROSEBURG

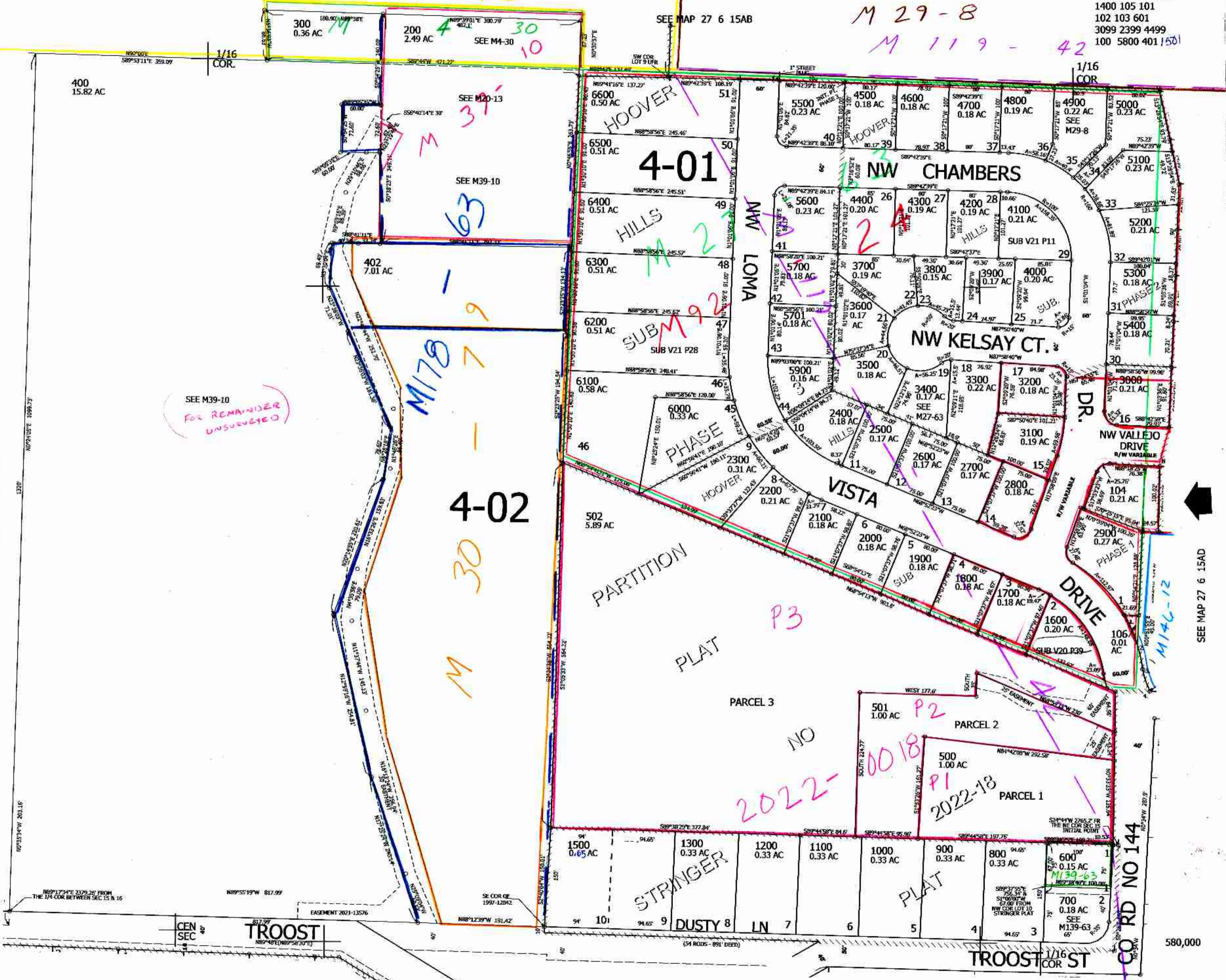
CANCELLED NO'S  
1400 105 101  
102 103 601  
3099 2399 4499  
100 5800 401 1501

M 20-13 1" = 100'

M 29-8  
M 119-42

SEE MAP 27 6 15BD

SEE MAP 27 6 15AD



SEE MAP 27 6 15DB

- PARCEL 106
1. N0°56'45"E 73.27'
  2. LC=S13°47'35"E 35.34'
  3. LC=S21°34'04"E 42.69'
  4. N88°16'19"W 25.34'

4,150,500

27 6 15AC ROSEBURG  
3/2001 JP