

THIS MAP WAS PREPARED FOR
ASSESSMENT PURPOSE ONLY

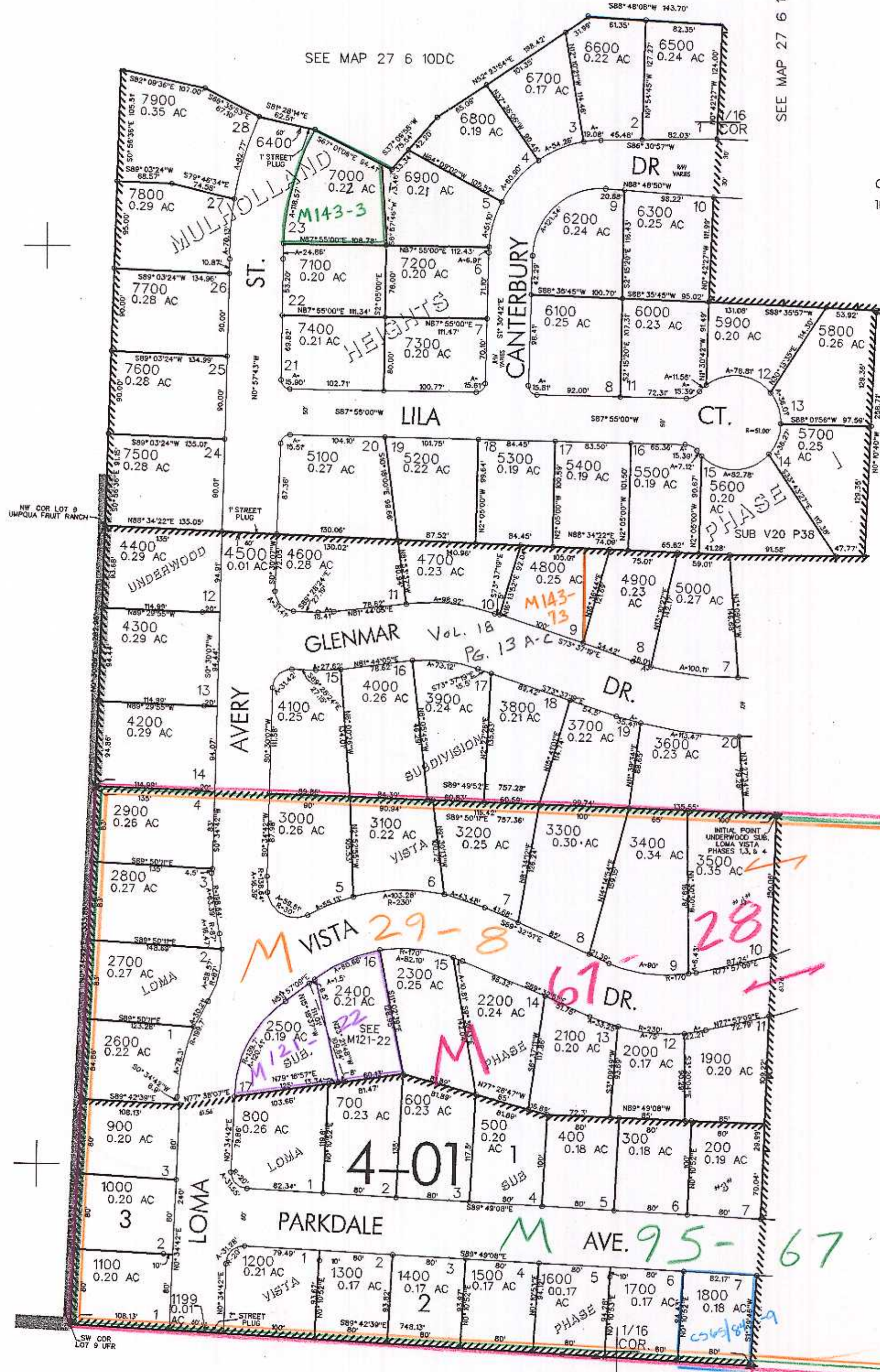
NW1/4 NE1/4 SEC. 15 T.27S. R.6 W W.M.
DOUGLAS COUNTY

REVISED ON
8-9-95

27 6 15AB
ROSEBURG

1"=100'

1/4
COR



SEE MAP 27 6 10DD

CANCELLED NO'S
100 899

SEE MAP 27 6 15AA

SEE MAP 27 6 15

581,500

4,151,000

SEE MAP 27 6 15AC

27 6 15AB
ROSEBURG

4/01 -P HED

1/16
COR