

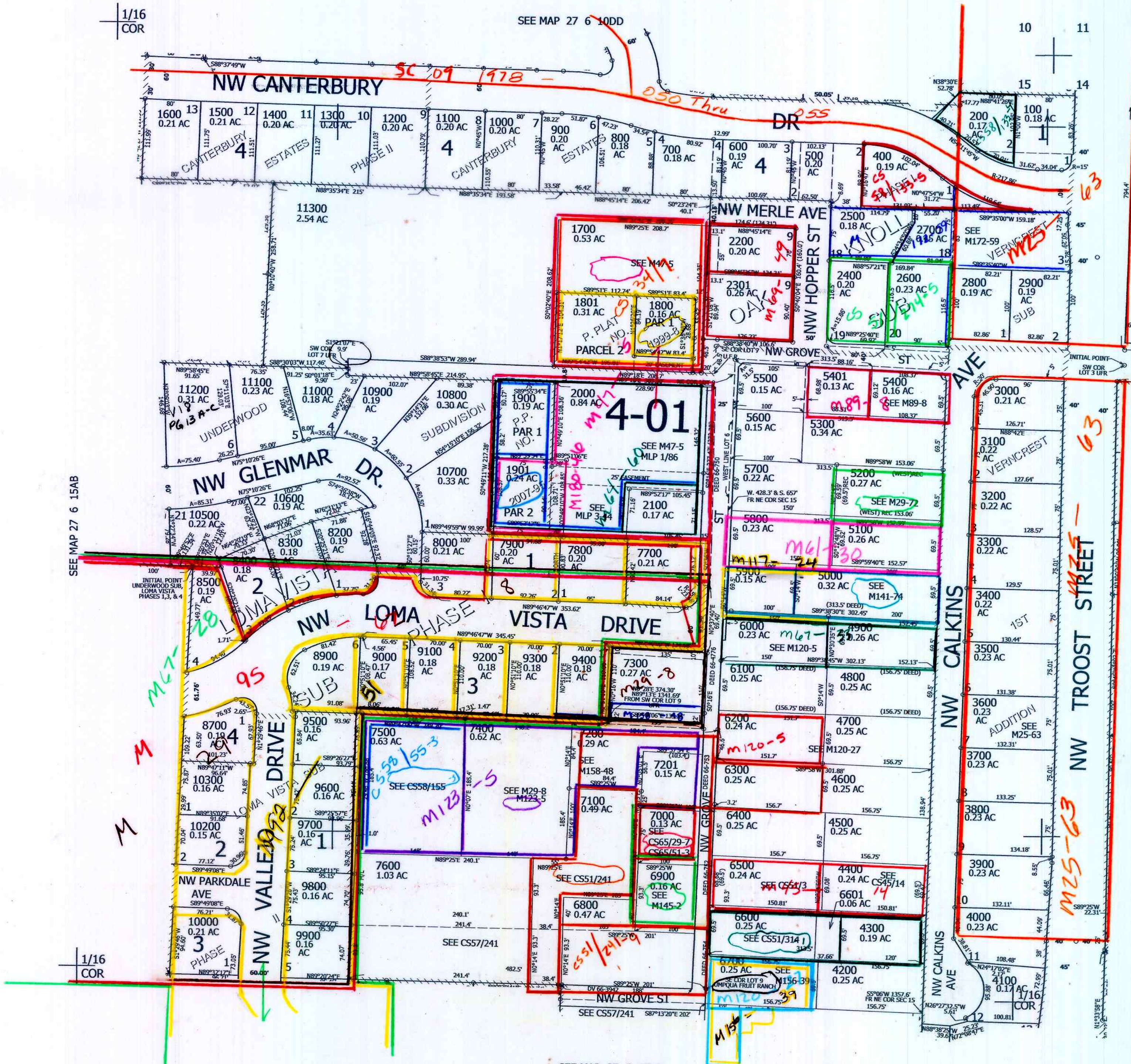
THIS MAP WAS PREPARED FOR ASSESSMENT PURPOSE ONLY.

NE1/4 NE1/4 SEC.15 T.27S. R.6W. W.M. DOUGLAS COUNTY

REVISED ON 2-9-22

27 6 15AA ROSEBURG

1" = 100'



CANCELLED NO'S  
2300 8600 10400  
10100 8800 8100  
2099 7301 2501  
300 2001

SEE MAP 27 6 14BB

581,500

CM  
8/3/27  
SC

27 6 15AA ROSEBURG

4,152,000