

THIS MAP WAS PREPARED FOR ASSESSMENT PURPOSE ONLY.

SEE MAP 27 6 14DB

SW1/4 SE1/4 SEC.14 T.27S. R.6W. W.M. DOUGLAS COUNTY

REVISED ON 6-27-13

27 6 14DC ROSEBURG

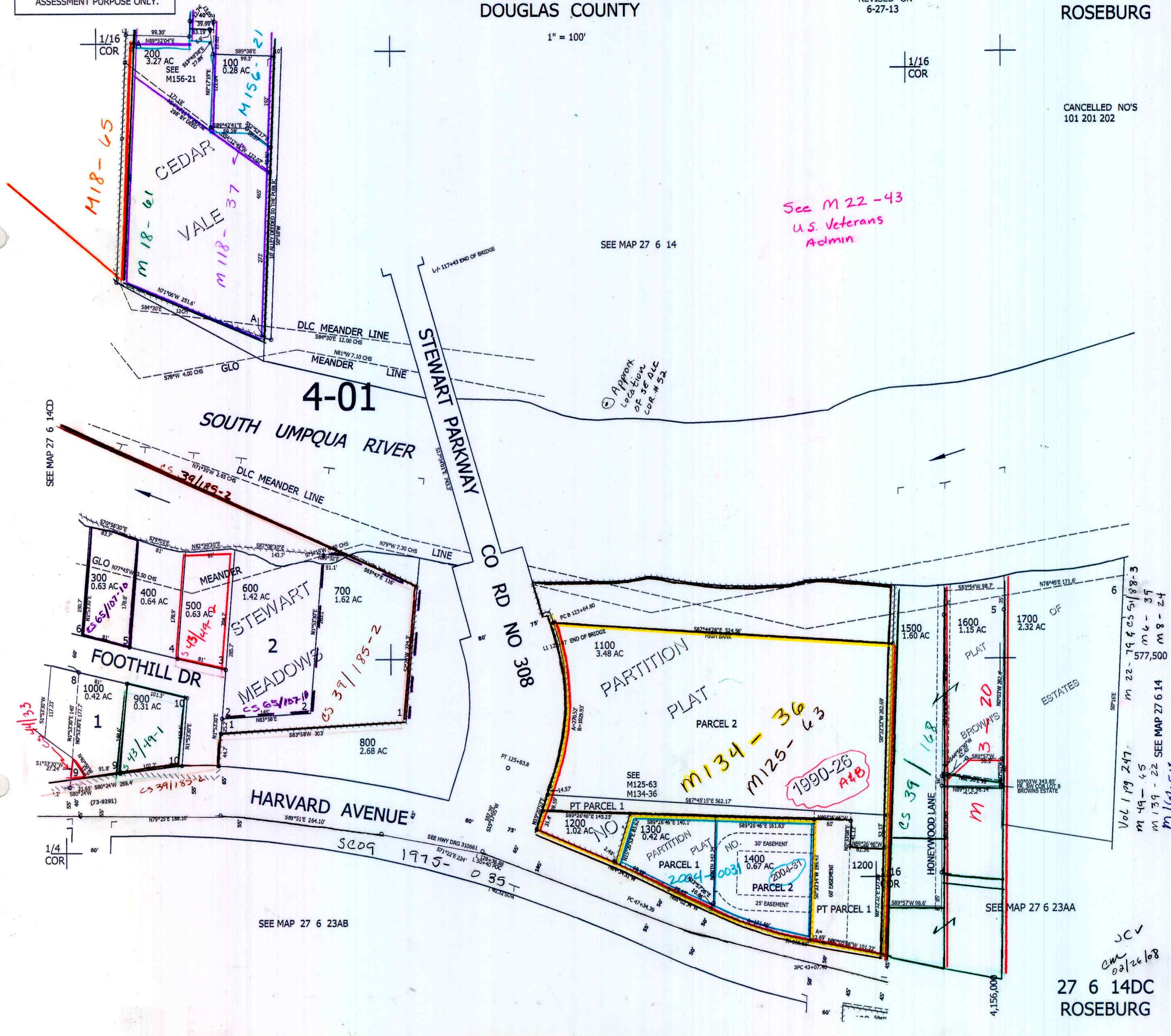
1" = 100'

CANCELLED NO'S 101 201 202

See M 22-43
U.S. Veterans Admin.

SEE MAP 27 6 14

Approx. Location of SE DLC COR. # 52



4-01

SOUTH UMPQUA RIVER

STEWART PARKWAY

RD NO 308

STEWART MEADOWS

HARVARD AVENUE

PARTITION PLAT

M134-36
M125-63
1990-26
A2B

BROWNS ESTATES

Vol 1 pg 247
M 49-45
M 139-22 SEE MAP 27 6 14
M 161-54

M 22-79 & 85 5/188-3
M 4-39
M 8-24
577,500

SEE MAP 27 6 23AB

SEE MAP 27 6 23AA

27 6 14DC ROSEBURG

JCV
CML
02/26/08