

THIS MAP WAS PREPARED FOR
ASSESSMENT PURPOSE ONLY.

SW1/4 SW1/4 SEC.14 T.27S. R.6W. W.M.
DOUGLAS COUNTY

REVISED ON
2-4-21

27 6 14CC
ROSEBURG

1" = 100'

SEE MAP 27 6 14CB

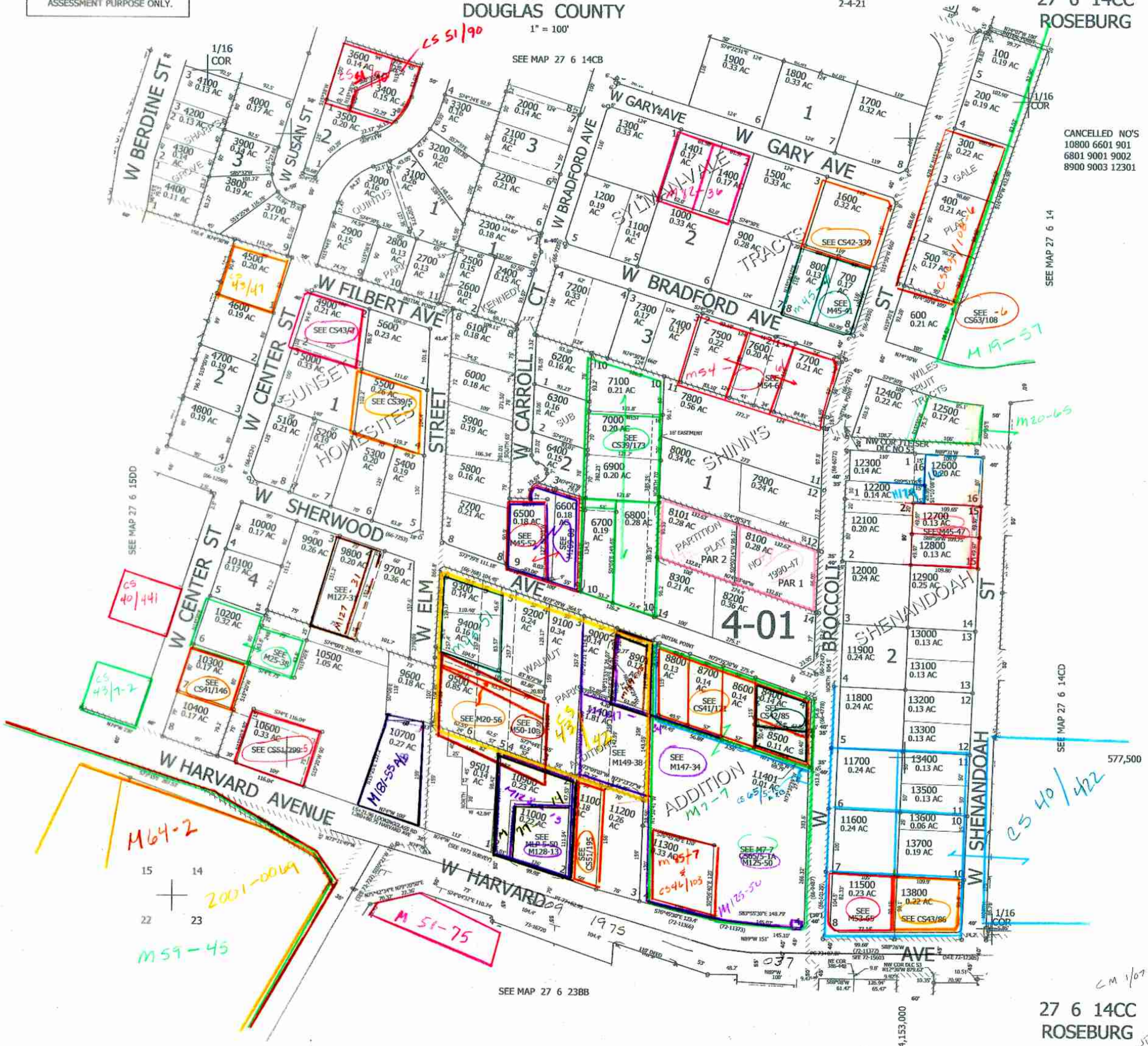
CANCELLED NO'S
10800 6601 901
6801 9001 9002
8900 9003 12301

SEE MAP 27 6 14

SEE MAP 27 6 14CD

SEE MAP 27 6 238B

27 6 14CC
ROSEBURG



CM 1/07

4,153,000