

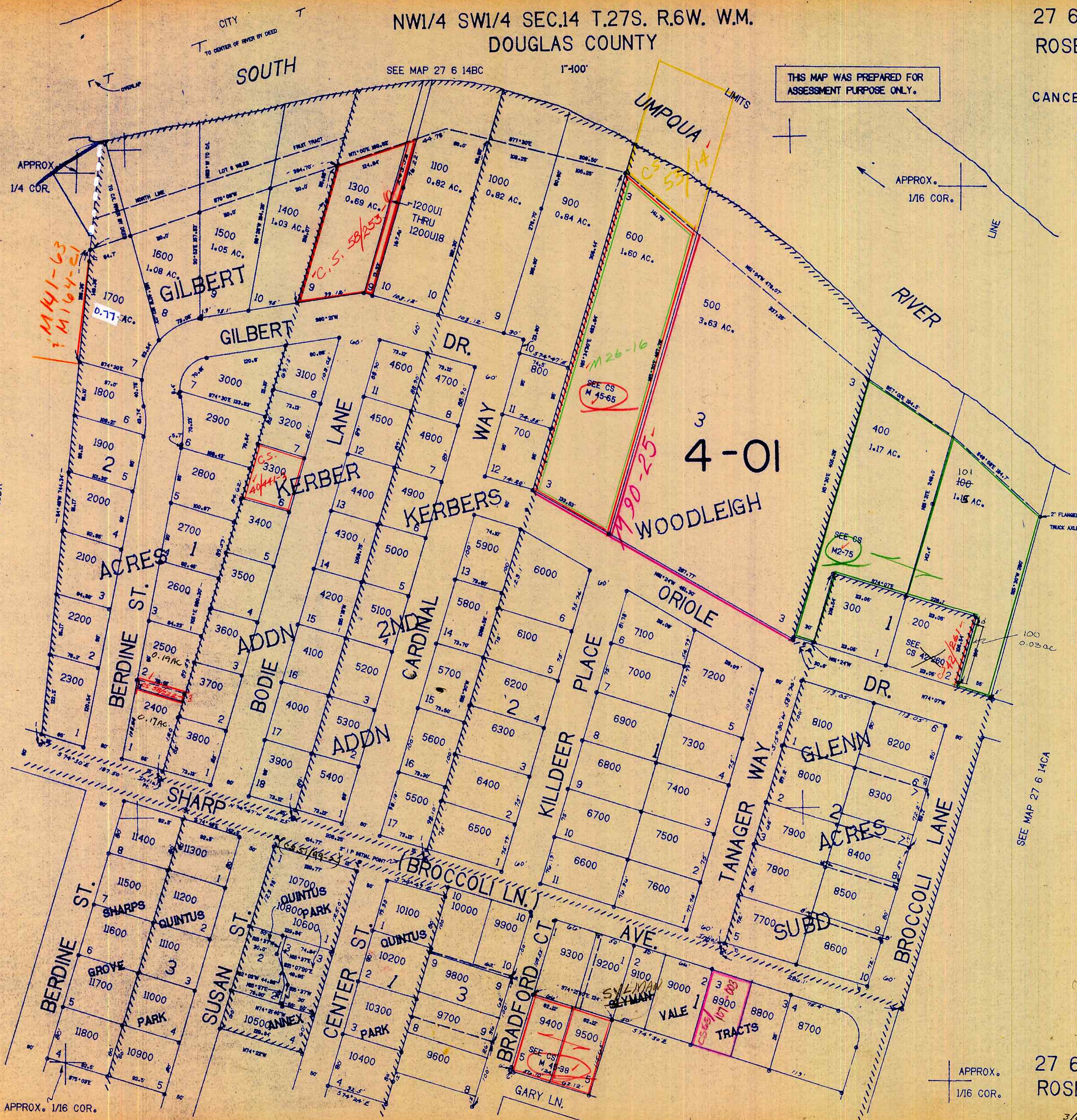
NW1/4 SW1/4 SEC.14 T.27S. R.6W. W.M.
DOUGLAS COUNTY

27 6 14CB
ROSEBURG

CANCELLED NOS.

2401

THIS MAP WAS PREPARED FOR
ASSESSMENT PURPOSE ONLY.



SEE MAP 27 6 15DA

SEE MAP 27 6 14CA

SEE MAP 27 6 14CC

1,232,000.

579,000

27 6 14CB
ROSEBURG

3/81
ab

CONTROL LAYOUT TRACED CHECKED