

SE1/4 NW1/4 SEC.14 T.27S. R.6W. W.M.
DOUGLAS COUNTY

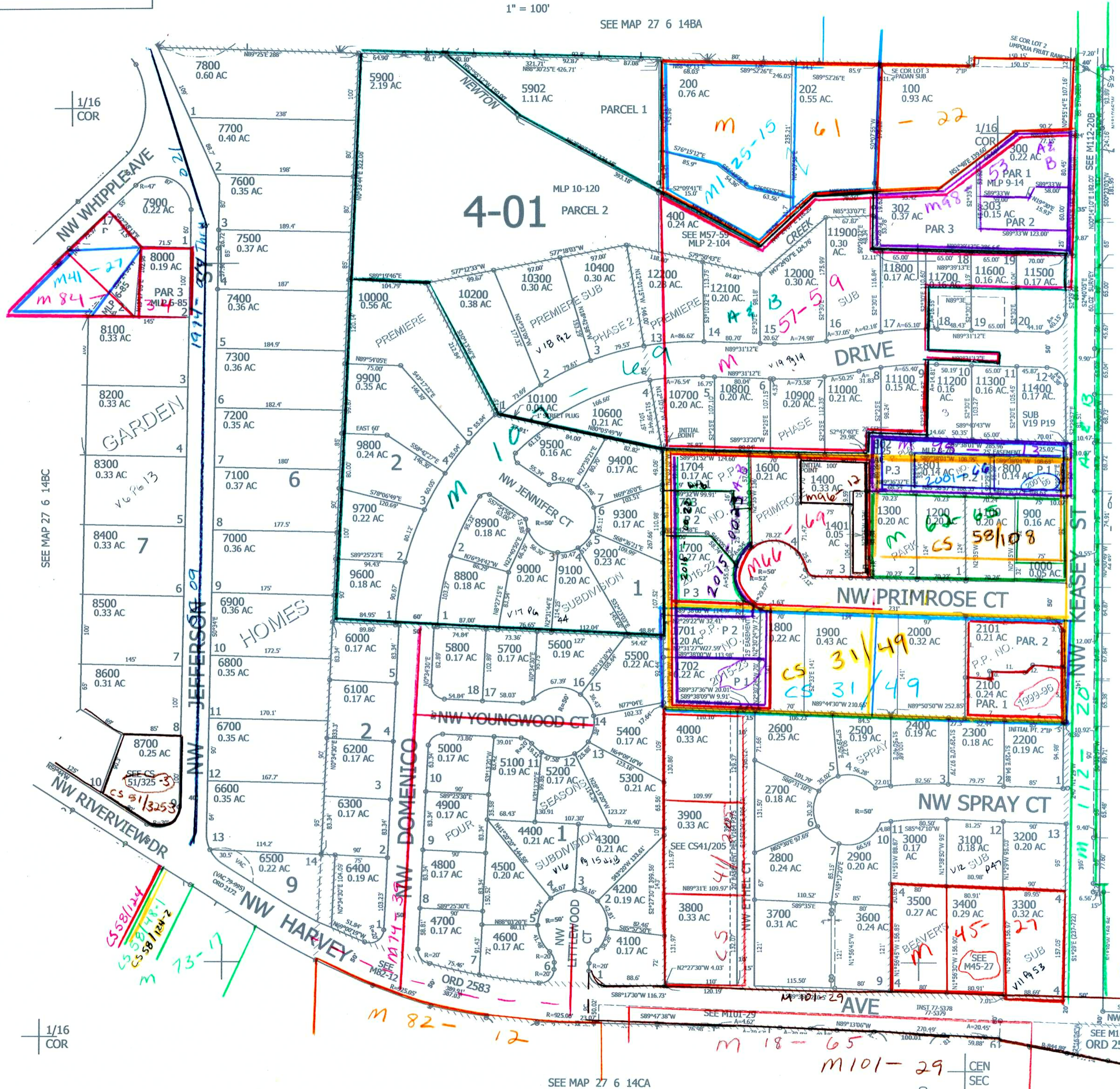
REVISED ON
10-18-18

27 6 14BD
ROSEBURG

THIS MAP WAS PREPARED FOR
ASSESSMENT PURPOSE ONLY.

1" = 100'

SEE MAP 27 6 14BA



CANCELLED NO'S
 8001 8002 1500
 5903 301 201
 401 500 600
 700 5904 11501
 11201 11602 10500
 11601 11701 803
 804 5901

PP 1999-96
 1. N2°33'56"W 76.89'
 2. N89°34'04"E 120.05'
 3. R=20' A=30.85'
 4. S1°58'57"E 35.21'
 5. S1°58'57"E 88.65'
 6. S89°22'08"W 85.62'
 7. S89°33'49"W 52.45'
 8. N2°33'56"W 52.45'
 9. N89°34'04"E 34.66'
 10. N1°16'17"W 10.83'
 11. N89°34'04"E 50.7'
 12. N43°43'39"E 15.64'
 13. N89°21'14"E 42.04'

am 5/17/18
 580,000

SEE MAP 27 6 14BC

SEE MAP 27 6 14AC

1/16
COR

SEE MAP 27 6 14CA

4,154,500

27 6 14BD
ROSEBURG