

THIS MAP WAS PREPARED FOR ASSESSMENT PURPOSE ONLY.

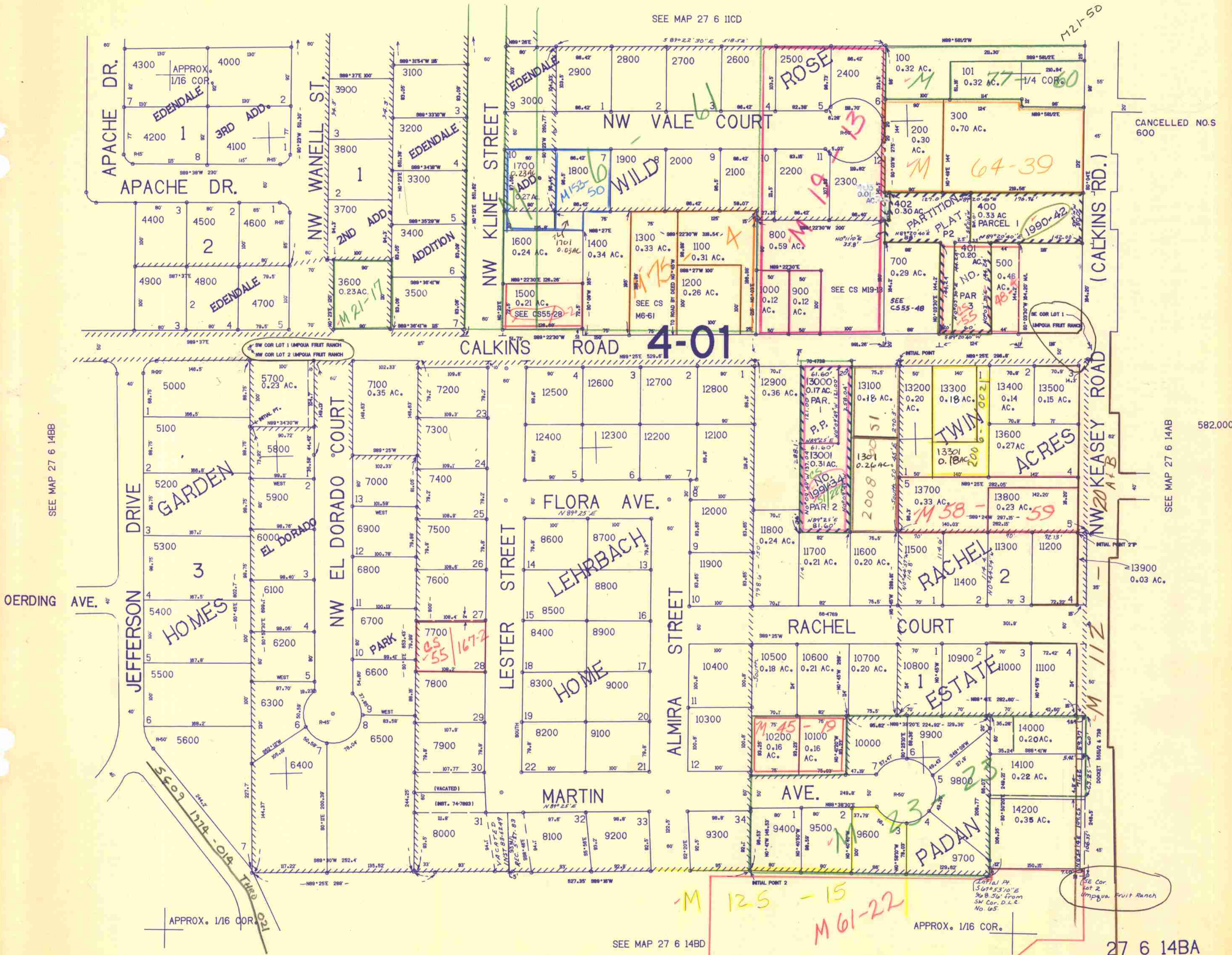
NE1/4NW1/4 SEC. 14 T.27S. R.6W. W.M. DOUGLAS COUNTY

27 6 14BA ROSEBURG

REVISED ON 7-16-91

1"=100'

SEE MAP 27 6 11CD



CANCELLED NO. 600

SEE MAP 27 6 14AB 582.000

SEE MAP 27 6 14BB

SEE MAP 27 6 14DB

27 6 14BA ROSEBURG

1.233.000

7/91