

THIS MAP WAS PREPARED FOR ASSESSMENT PURPOSE ONLY.

SW1/4 NE1/4 SEC.14 T.27S. R.6W. W.M. DOUGLAS COUNTY

REVISED ON 10-24-17

27 6 14AC ROSEBURG

1" = 100'

SEE MAP 27 6 14AB

1/16 COR

1/16 COR

CANCELLED NO'S

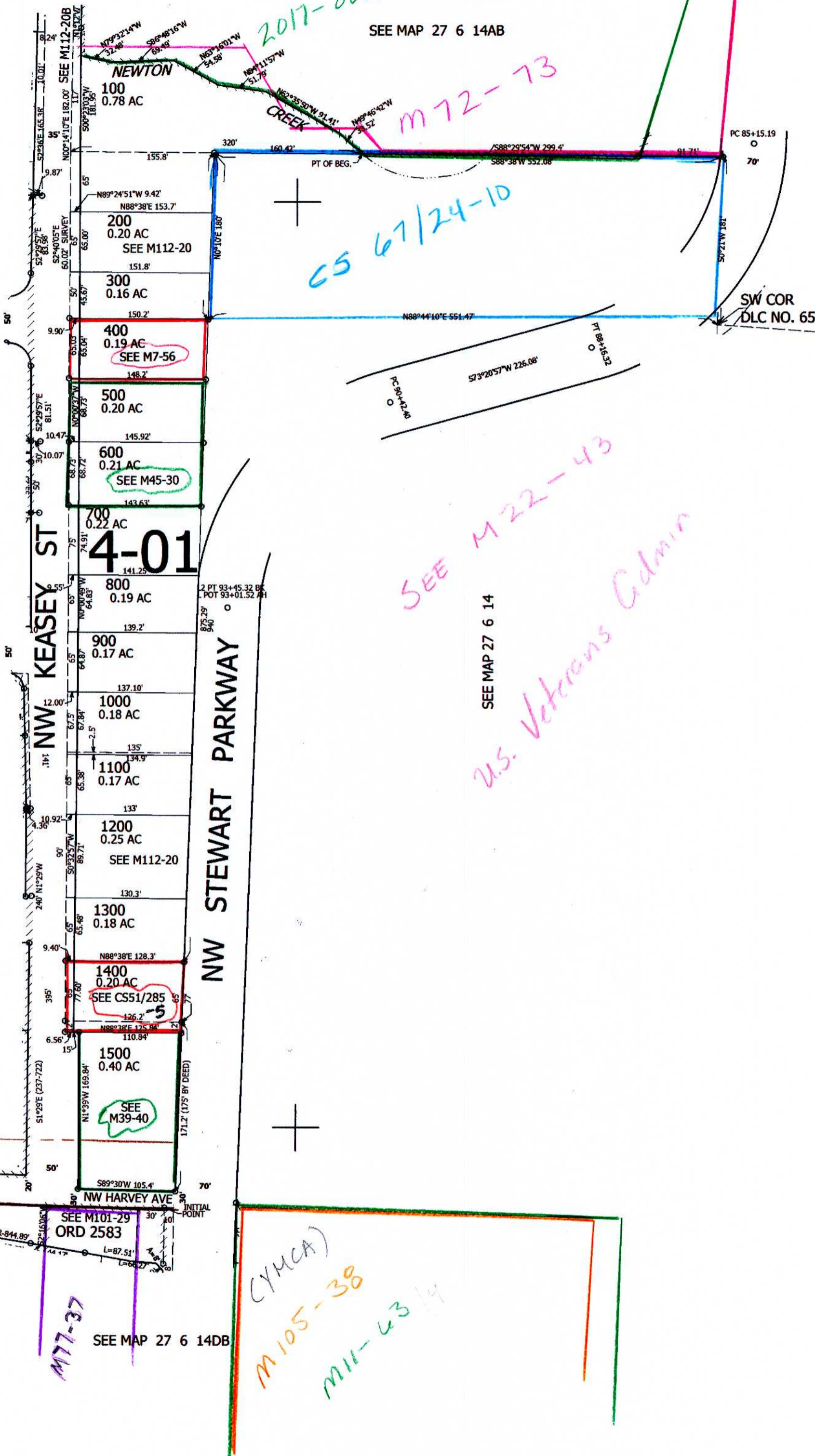
SEE MAP 27 6 14BD

SEE MAP 27 6 14

580,000

CEN SEC

1/16 COR



11/17 CM
JCL
27 6 14AC
ROSEBURG

4,156,000