

THIS MAP WAS PREPARED FOR ASSESSMENT PURPOSE ONLY.

SW1/4SE1/4 SEC. 13 T.27S. R.6W. W.M. DOUGLAS COUNTY

REVISED ON 5-10-94

27 6 13DC ROSEBURG

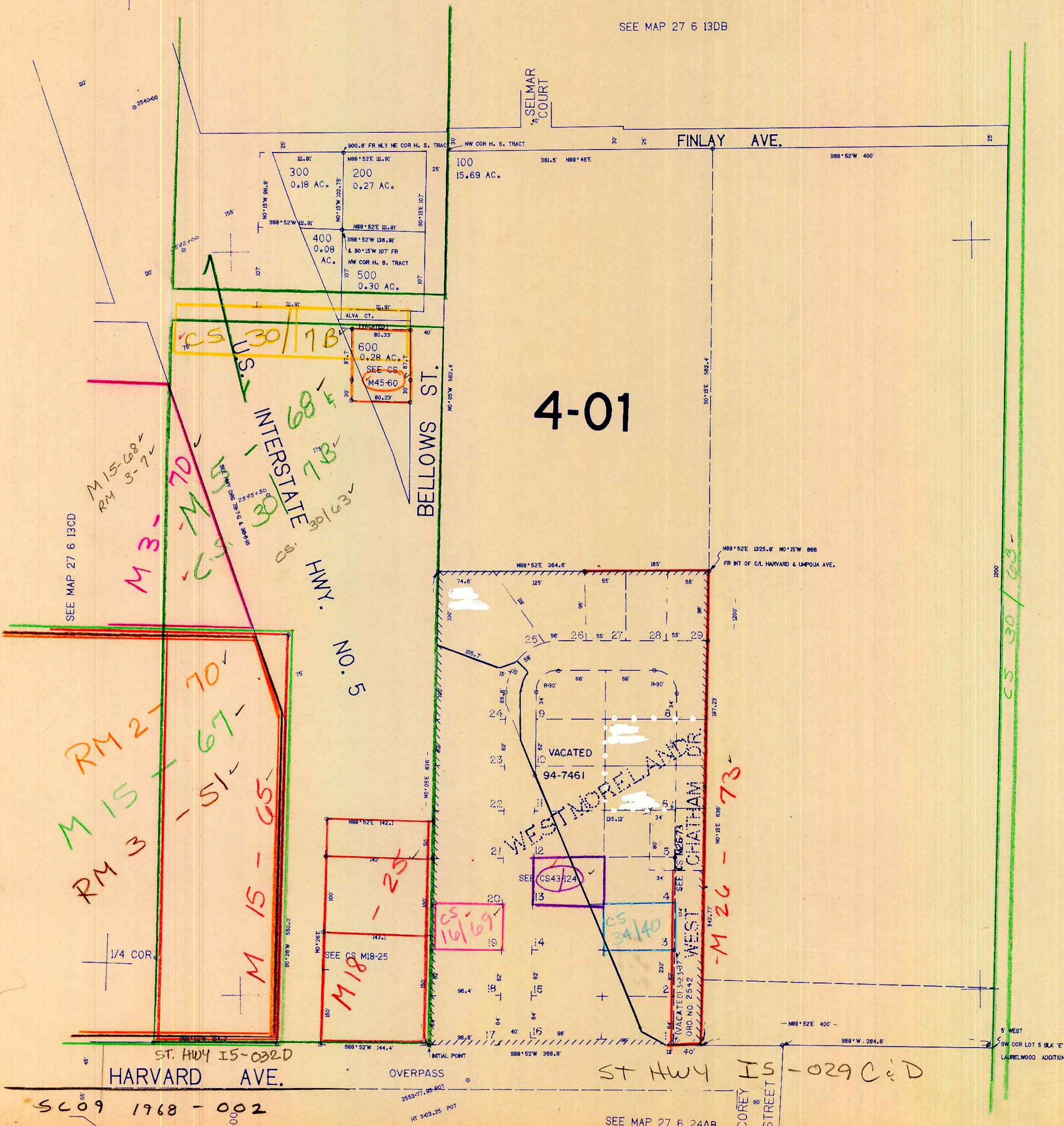
APPROX. 1/16 COR.

1"=100'

APPROX. 1/16 COR.

CANCELLED	NO'S
800	900 1000
1100	1200 1300
1400	1401 1700
700	1500 1600

SEE MAP 27 6 13DB



578.000

SEE MAP 27 6 13CD

SEE MAP 27 6 13DD

APR 5 1994

SC09 1968 - 002

1239.0000

SEE MAP 27 6 24AB

27 6 13DC ROSEBURG