

THIS MAP WAS PREPARED FOR ASSESSMENT PURPOSE ONLY.

Upper Left:
123°21'47"W 43°13'15"N
4158294E 579441N ft

NE1/4 SW1/4 SEC.13 T.27S. R.06W. W.M.
DOUGLAS COUNTY
1" = 100'

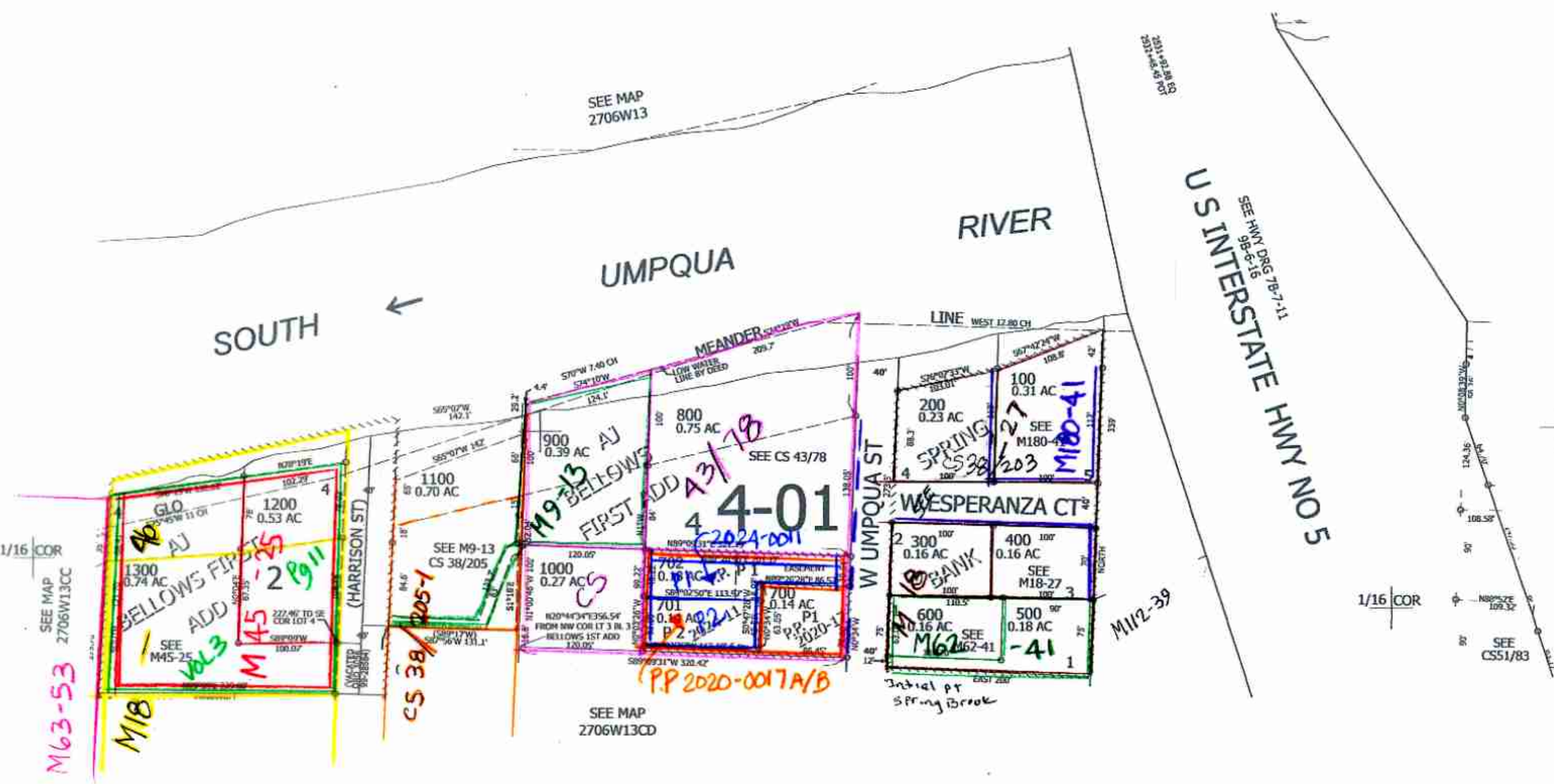
Date Exported 2024-03-26

270613CA
Roseburg

CANCELLED NOS:

CS 45/255
MI-55

M3-72



SOUTH

UMPQUA RIVER

U S INTERSTATE HWY NO 5

A/2024
JCV

270613CA
Roseburg

Lower Right:
123°21'20"W 43°12'58"N
4160257E 577702N ft