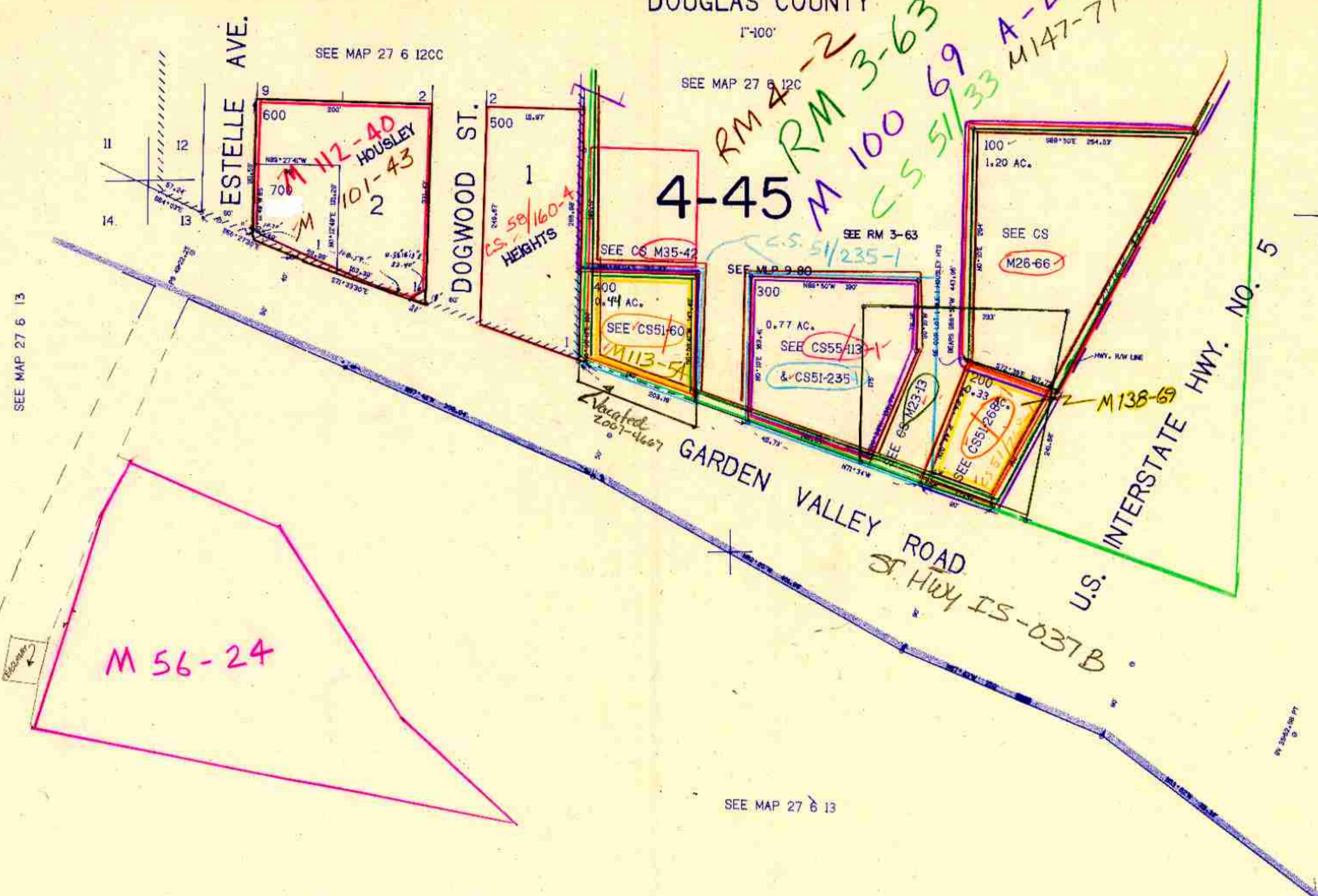


THIS MAP WAS PREPARED FOR ASSESSMENT PURPOSE ONLY.

NW1/4NW1/4 SEC. 13 T.27S. R.6W. W.M.
DOUGLAS COUNTY

27 6 13BB
ROSEBURG



SEE MAP 27 6 13

SEE MAP 27 6 12C

SEE RM 3-63

SEE MAP 27 6 13

APPROX. 1/16 COR.
CANCELLED NO'S
300A1 200A1
700A1

582.000

M 56-24

4-45

RM 4-2-63
RM 3-63
M 100-69
CS 51/33
A-E
M147-71

GARDEN VALLEY ROAD
ST. HWY IS-037B

INTERSTATE HWY. NO. 5
U.S.

APPROX. 1/16 COR.

SEE MAP 27 6 13

APPROX. 1/16 COR.

27 6 13BB
ROSEBURG

1.236.000

1.237.000

11/90 AP