

THIS MAP WAS PREPARED FOR ASSESSMENT PURPOSE ONLY.

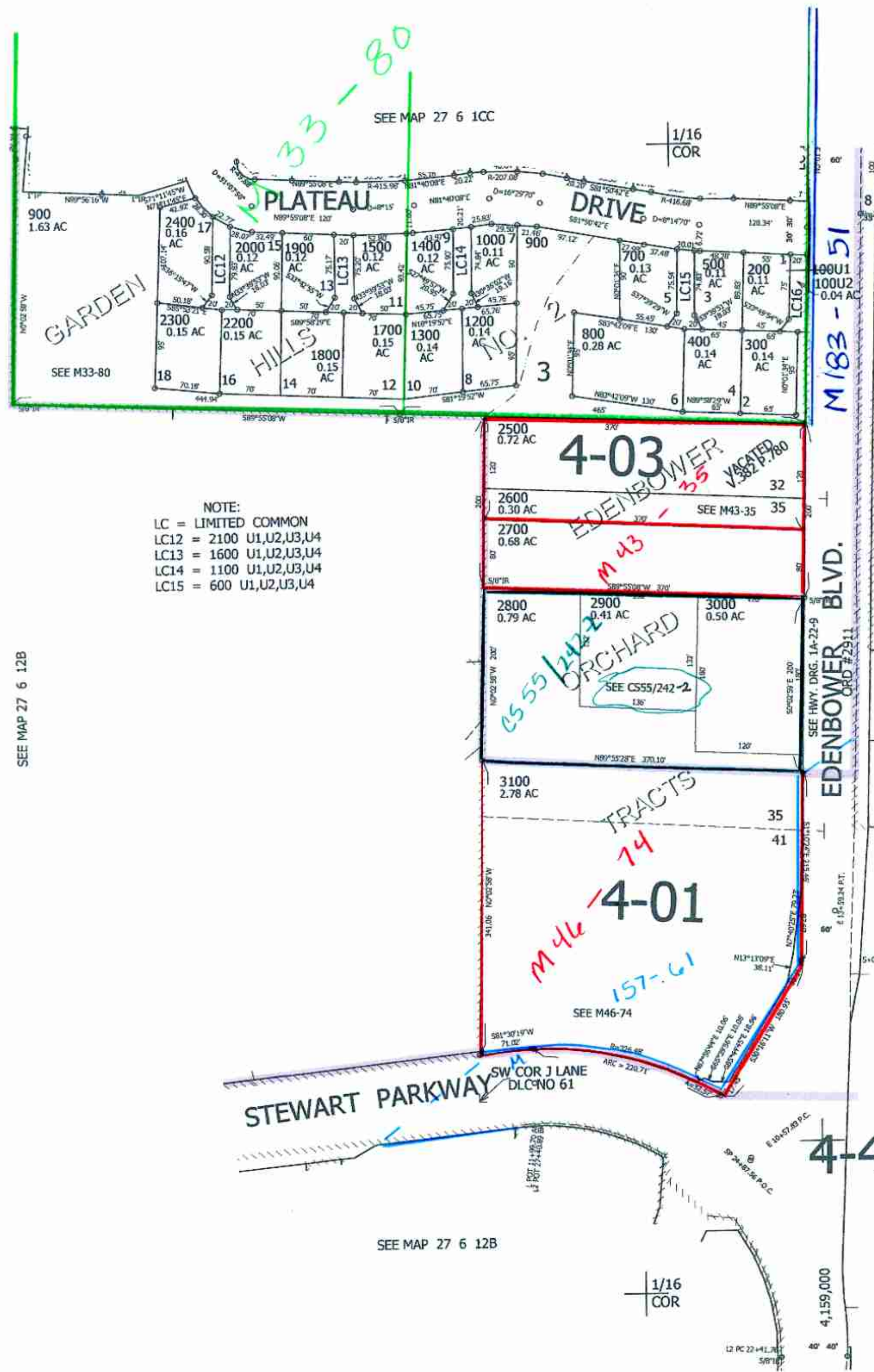
NW1/4 NW1/4 SEC.12 T.27S. R.6W. W.M.
DOUGLAS COUNTY

REVISED ON
6-28-12

27 6 12BB
ROSEBURG

1" = 100'

2 1
11 12



NOTE:
LC = LIMITED COMMON
LC12 = 2100 U1,U2,U3,U4
LC13 = 1600 U1,U2,U3,U4
LC14 = 1100 U1,U2,U3,U4
LC15 = 600 U1,U2,U3,U4

SEE MAP 27 6 12B

SEE MAP 27 6 1CC

1/16
COR

M183-51

CANCELLED NO'S

SEE MAP 27 6 12B

4-03

ORCHARD
SEE CS55/242-2

TRACTS
14

4-01

SEE M46-74

STEWART PARKWAY
SW COR 3 LANE
DLC NO 61

4-45

586,500

SEE MAP 27 6 12B

1/16
COR

AW
9/19/12

27 6 12BB
ROSEBURG

1/16
COR

4,159,000