

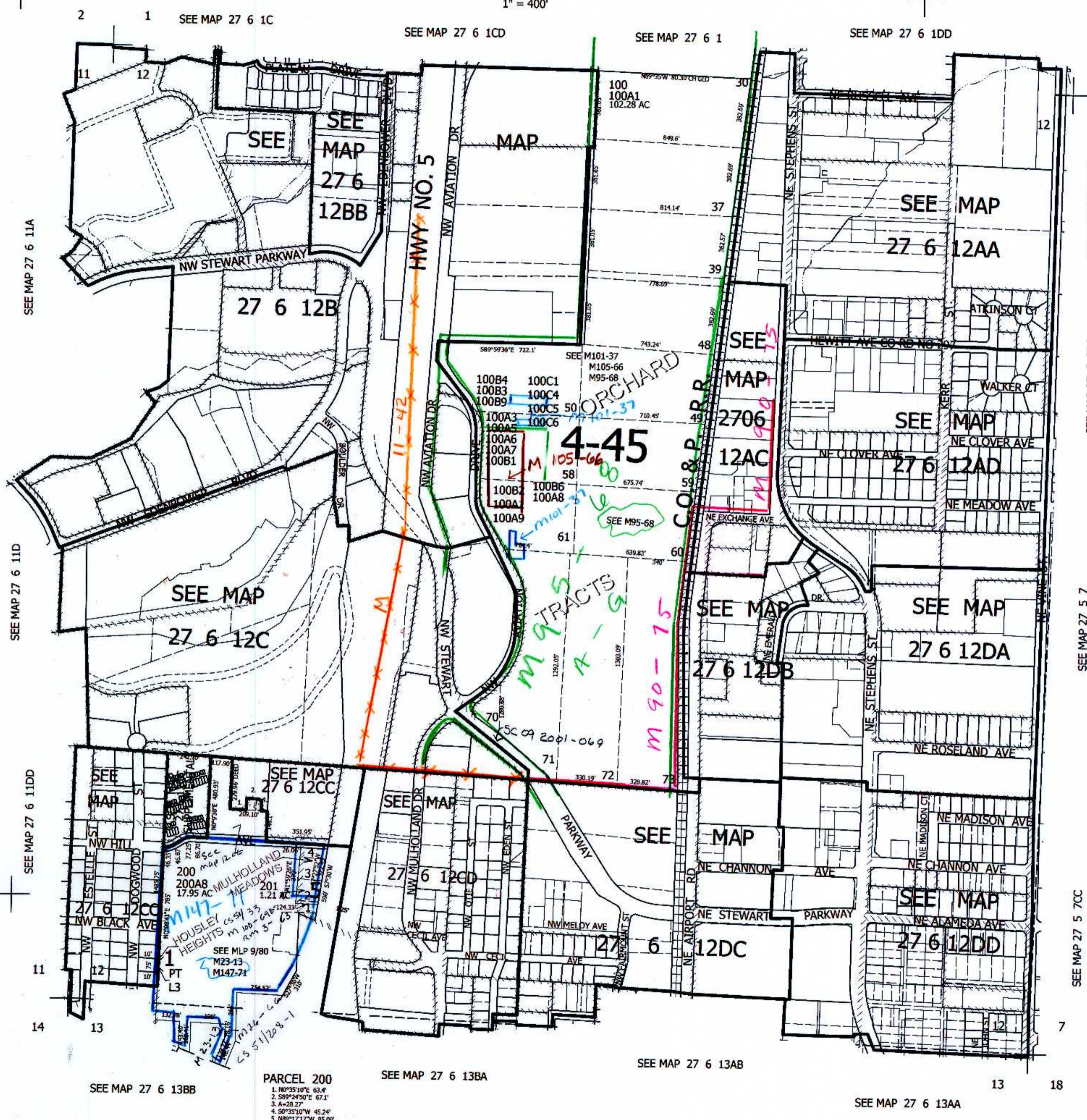
THIS MAP WAS PREPARED FOR ASSESSMENT PURPOSE ONLY.

SEC.12 T.27S. R.6W. W.M. DOUGLAS COUNTY

REVISED ON
6-27-17

27 6 12 & INDEX ROSEBURG

1" = 400'



CANCELLED NO'S
 200A2 200A1 200A3
 105 100B7 101
 100A4 100B8 102
 106 100A2 200A4
 103 200A5 104
 200A6 107 201A1
 100C3 100C7 100B5
 100C2 300 300A1
 200A7 200A9

PARCEL 200
 1. N0°35'10"E 63.4'
 2. S89°24'50"E 67.1'
 3. A=28.27
 4. S0°35'10"W 45.24'
 5. N89°17'17"W 65.05'

583,000

4,162,000

12/2016
CM

27 6 12 & INDEX ROSEBURG