

THIS MAP WAS PREPARED FOR
ASSESSMENT PURPOSE ONLY

SW1/4 SE1/4 SEC. 10 T.27S. R.6 W W.M.
DOUGLAS COUNTY

1"=100'

REVISED ON
3-12-02

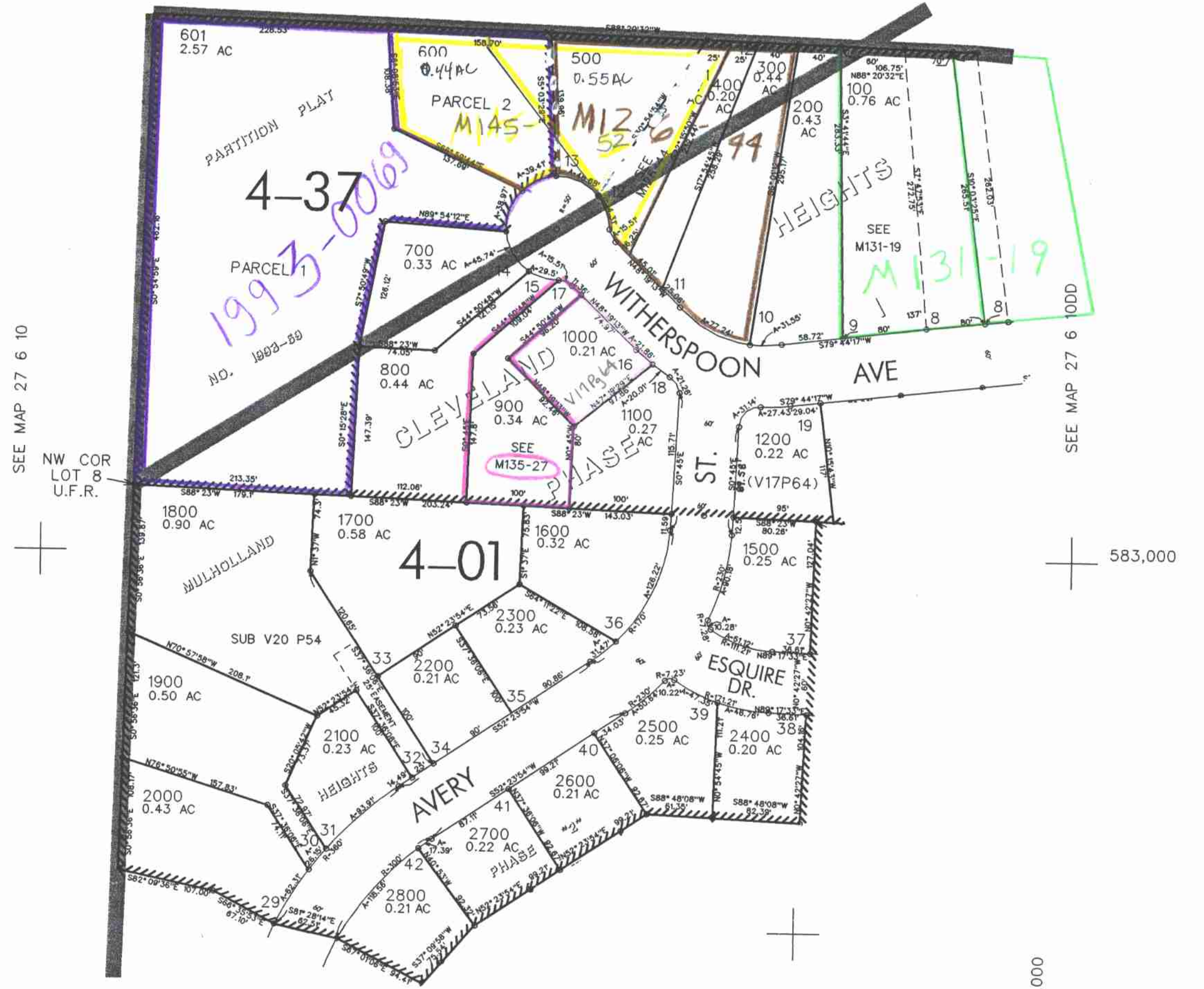
27 6 10DC
ROSEBURG

1/16
COR

1/16
COR

CANCELLED NO'S
1301 1302 1303
1304 1305 1300
1400 1199 401

SEE MAP 27 6 10



SEE MAP 27 6 10

SEE MAP 27 6 10

NW COR
LOT 8
U.F.R.

583,000

SEE MAP 27 6 15AB

1/4
COR

4,151,000

27 6 10DC
ROSEBURG
3/21/02