

NE1/4 SE1/4 SEC.10 T.27S. R.6W. W.M.  
DOUGLAS COUNTY

27 6 10DA  
ROSEBURG

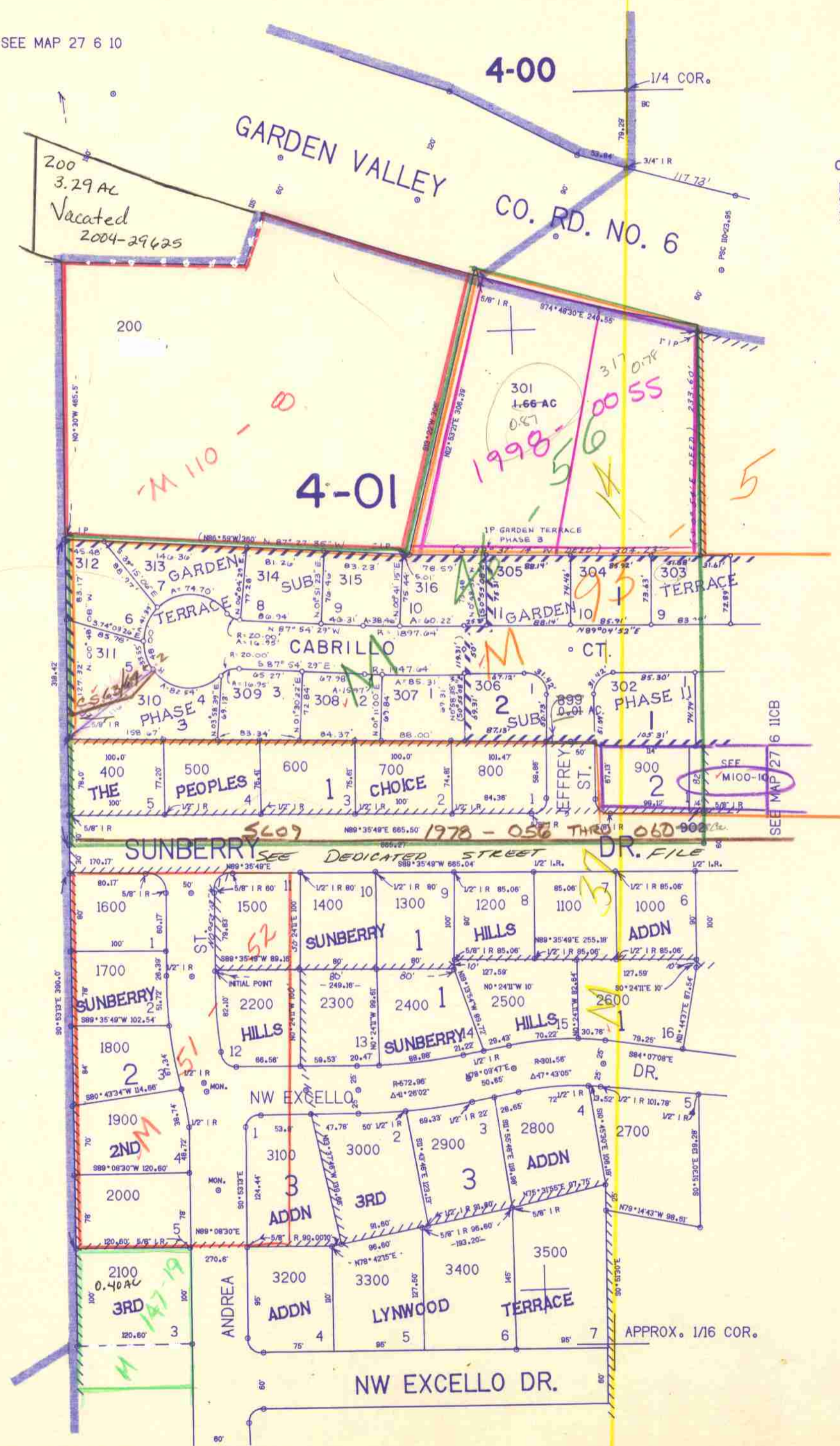
1"=100'

SEE MAP 27 6 10

APPROX. 1/16 COR.

THIS MAP WAS PREPARED FOR  
ASSESSMENT PURPOSE ONLY.

CANCELLED NO'S  
100  
901  
300  
902  
899



SEE MAP 27 6 10

SEE MAP 27 6 10CB

584.000

APPROX. 1/16 COR.

SEE MAP 27 6 10DD

27 6 10DA  
ROSEBURG

1:230,000