

THIS MAP WAS PREPARED FOR ASSESSMENT PURPOSE ONLY.

NE 1/4 SEC. 10 T. 27S. R. 6W. W. M. DOUGLAS COUNTY

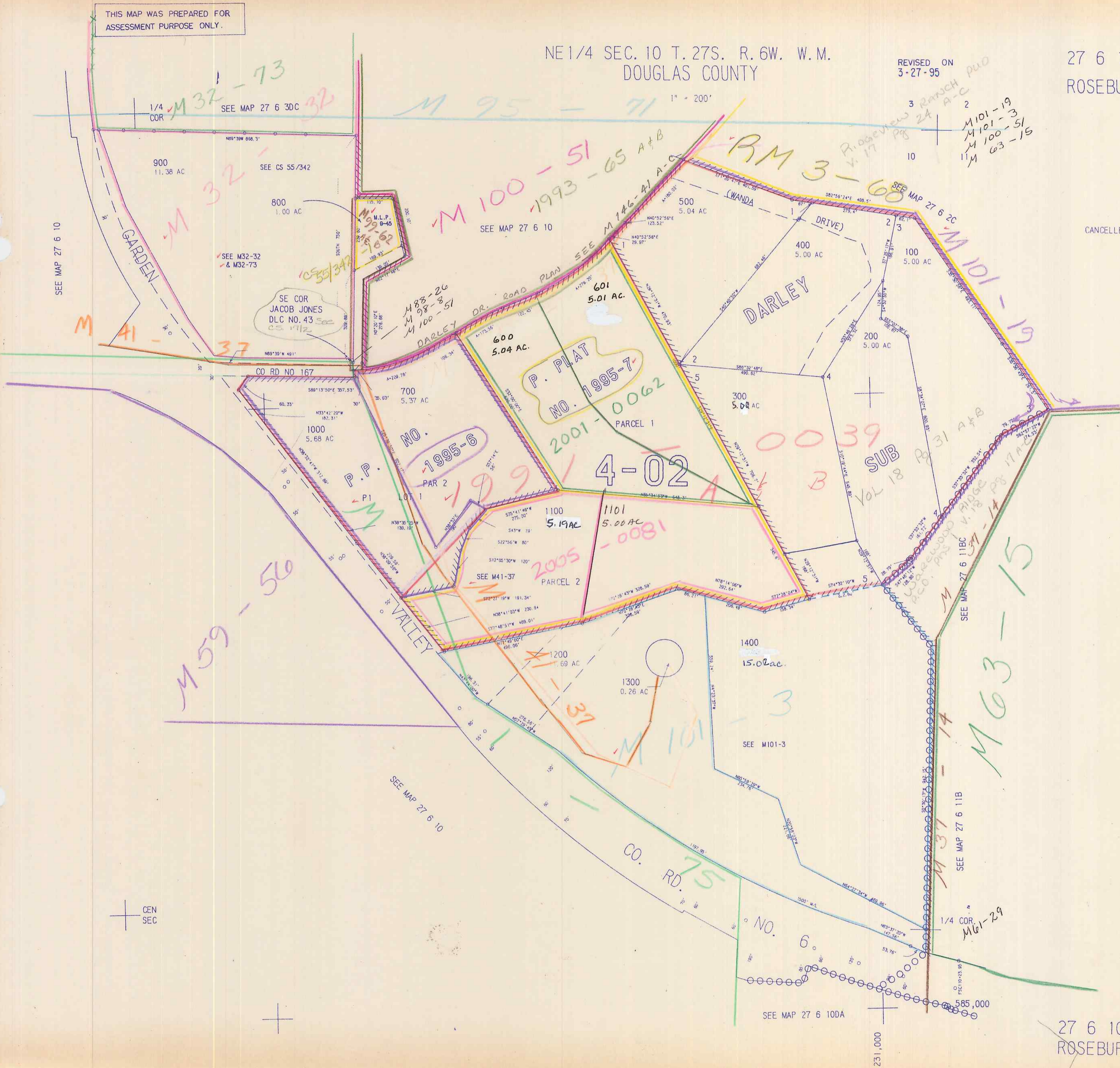
REVISED ON 3-27-95

27 6 10A ROSEBURG

1" = 200'

3
2
10
M 101-19
M 101-31
M 100-51
M 63-15

CANCELLED NO'S



GEN SEC

SEE MAP 27 6 10DA

27 6 10A ROSEBURG

1/95 PR