

SE1/4 SEC. 9 T.27S. R.6W. W.M.
DOUGLAS COUNTY

REVISED ON
4-12-93

27 6 9D

1"=200'

APPROX. GEN. SEC.

THIS MAP WAS PREPARED FOR
ASSESSMENT PURPOSE ONLY.

APPROX. 1/4 COR.

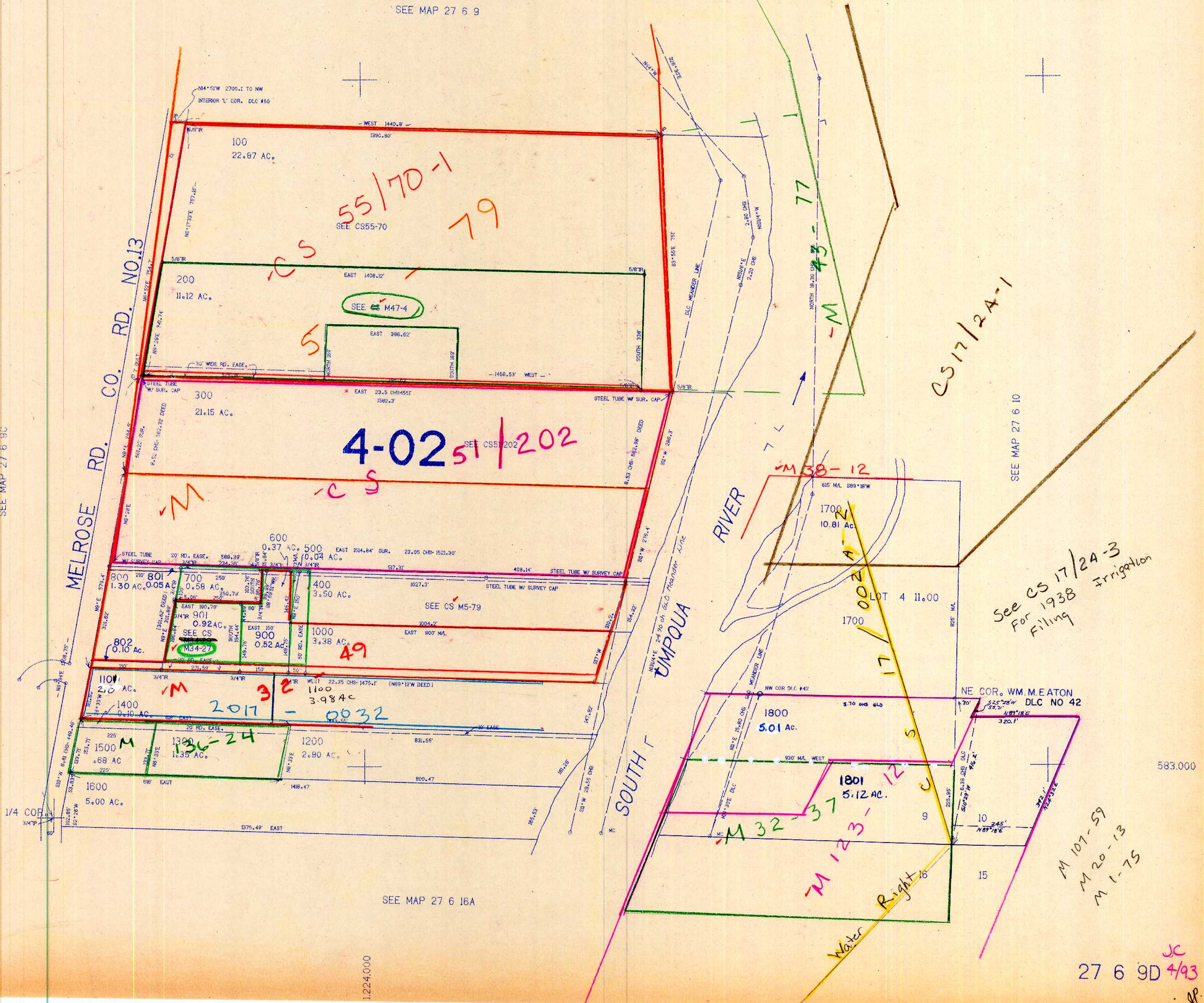
SEE MAP 27 6 9

SEE MAP 27 6 9C

SEE MAP 27 6 10

SEE MAP 27 6 16A

1.224.000



See CS 17/24-3
For 1938
Filing
Irrigation

M 107-59
M 20-13
M 1-75

27 6 9D 4/93
JC
JP