

SW1/4 SEC. 9 T.27S. R.6W. W.M.
DOUGLAS COUNTY

27 6 9C

APPROX. 1/4 COR.

APPROX. GEN. SEC.

1"=200'

CANCELLED NO'S
1701 400

THIS MAP WAS PREPARED FOR
ASSESSMENT PURPOSE ONLY.

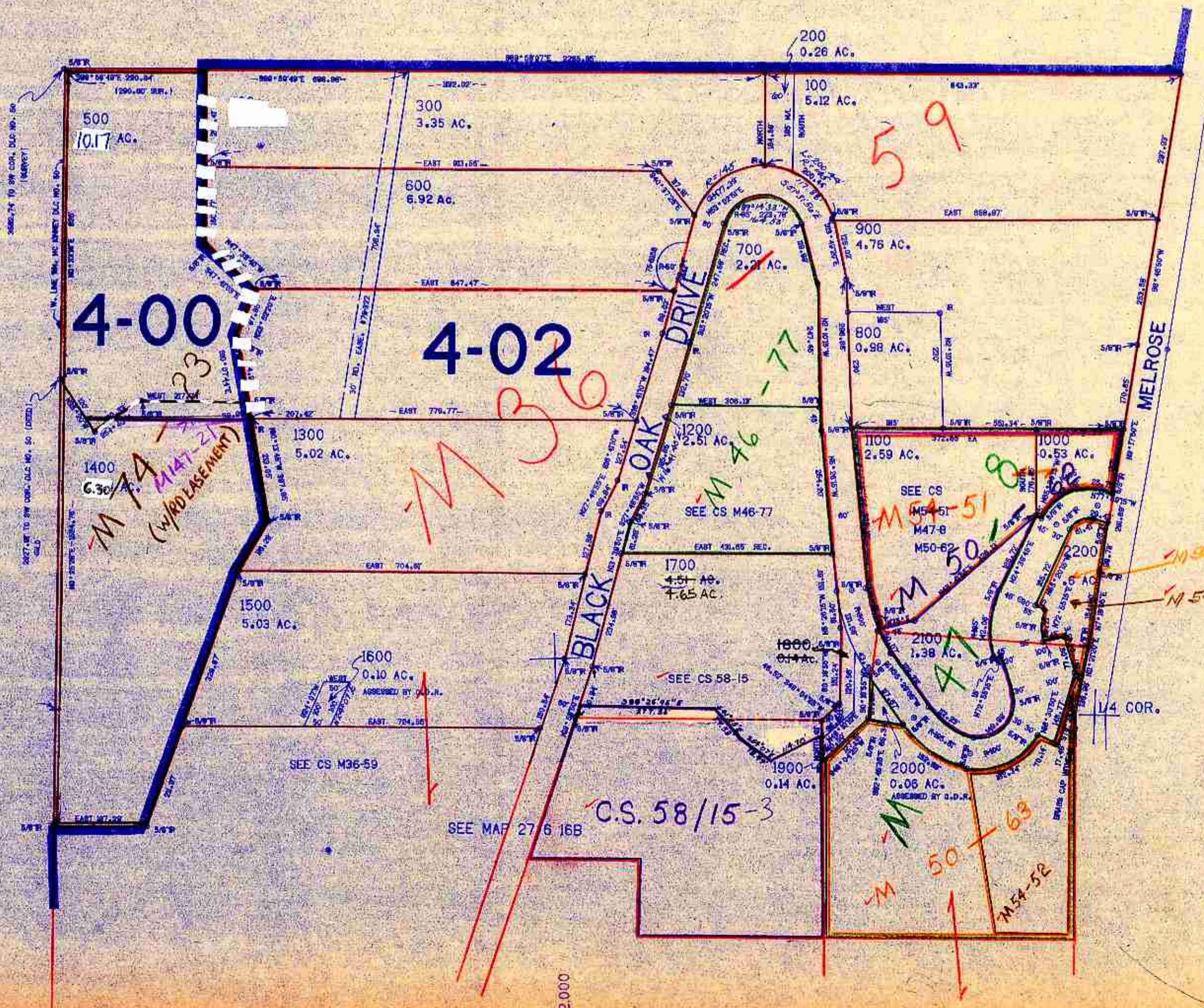
SEE MAP 27 6 9

8 9
17 16

SEE MAP 27 6 8

SEE MAP 27 6 9D

583.000



27 6 9C

cancelled 9/26/00
Nos 1701 41800