

THIS MAP WAS PREPARED FOR ASSESSMENT PURPOSE ONLY.

SE1/4SW1/4 SEC.2 T.27S. R.6W. W.M.
DOUGLAS COUNTY
1" = 100'

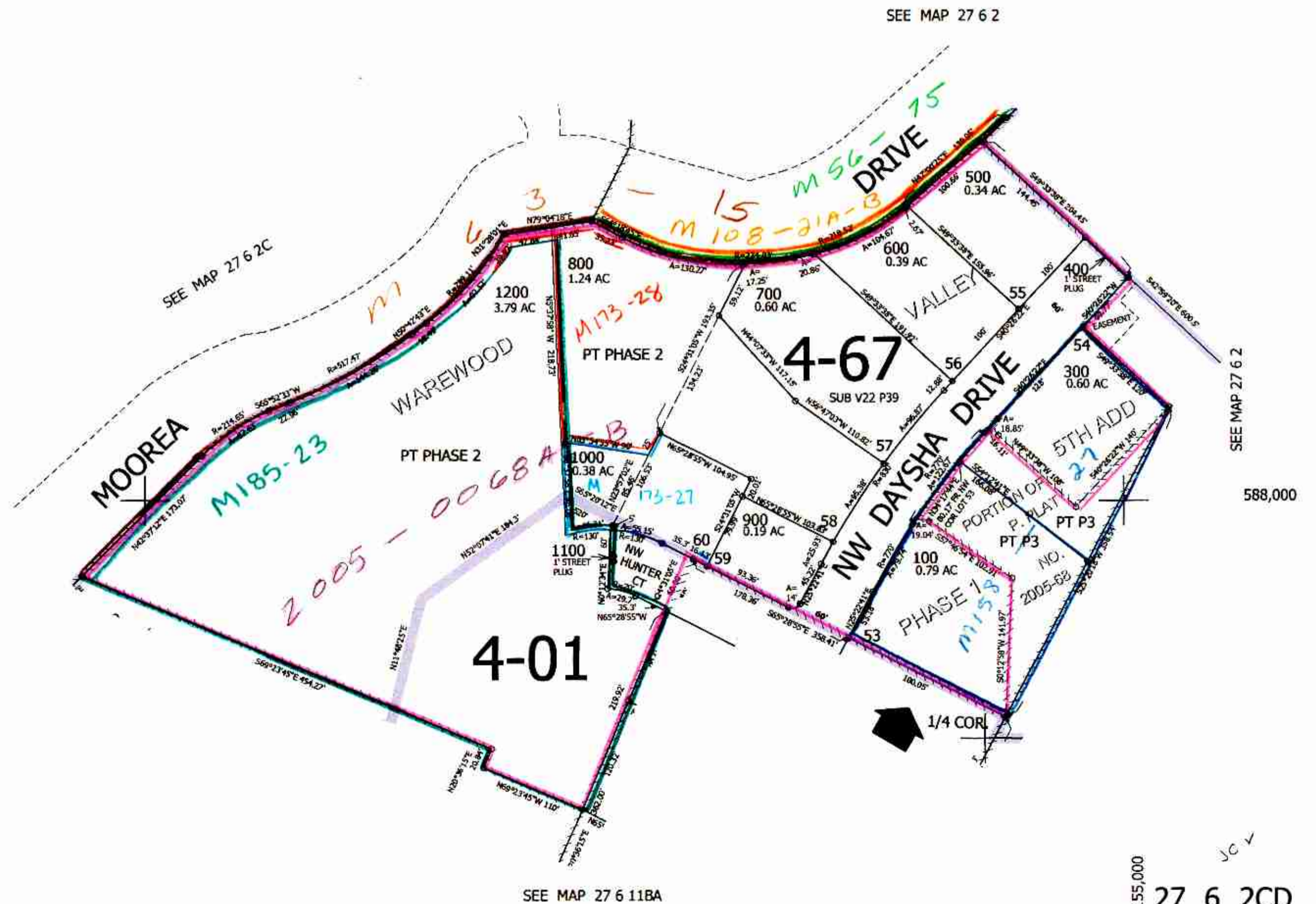
REVISED ON
4-20-17

27 6 2CD
ROSEBURG

CANCELLED NO'S
200 201 1201
1202

1/16 COR

1/16 COR



1/16 COR

SEE MAP 27 6 11BA

4,155,000
27 6 2CD
ROSEBURG