

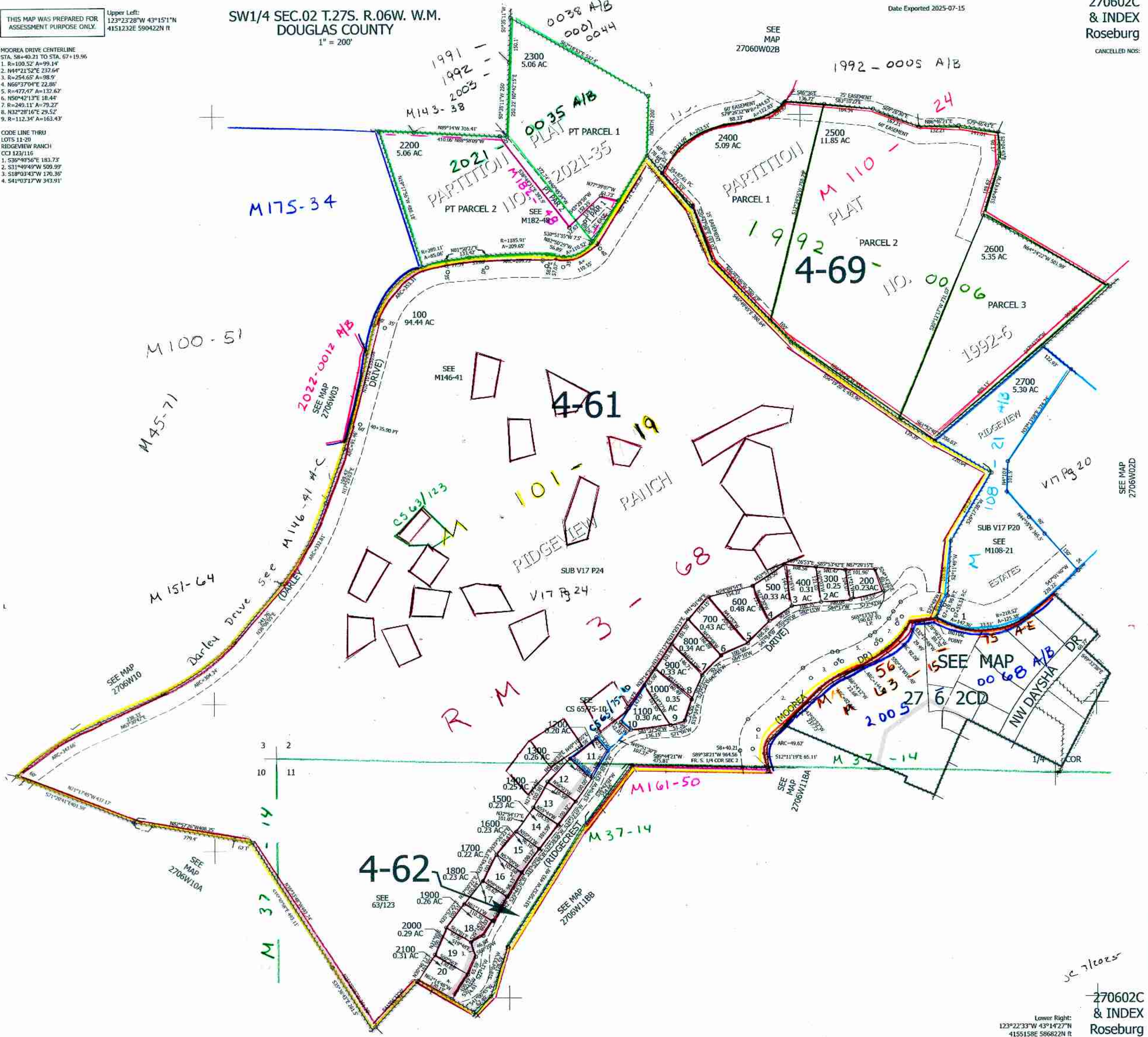
THIS MAP WAS PREPARED FOR ASSESSMENT PURPOSE ONLY. Upper Left: 123°23'28"W 43°15'1"N 4151232E 590422N ft

SW1/4 SEC.02 T.27S. R.06W. W.M. DOUGLAS COUNTY 1" = 200'

Date Exported 2025-07-15

270602C & INDEX Roseburg CANCELLED NOS:

- MOOREA DRIVE CENTERLINE STA. 58+40.21 TO STA. 67+19.96
1. R=100.52' A=99.14'
 2. M44°21'52"E 237.64'
 3. R=254.65' A=98.9'
 4. N66°37'04"E 22.85'
 5. R=477.47' A=132.62'
 6. N50°42'13"E 18.44'
 7. R=249.11' A=79.27'
 8. N32°28'16"E 29.52'
 9. R=112.34' A=163.43'
- CODE LINE THRU LOTS 11-20 RIDGEVIEW RANCH CCI 123/116
1. S36°40'56"E 183.73'
 2. S31°49'49"W 509.99'
 3. S18°03'43"W 170.36'
 4. S41°03'17"W 343.91'



SEE MAP 2706W02D

270602C & INDEX Roseburg

Lower Right: 123°22'33"W 43°14'27"N 4155158E 596822N ft

JE 7/10/25