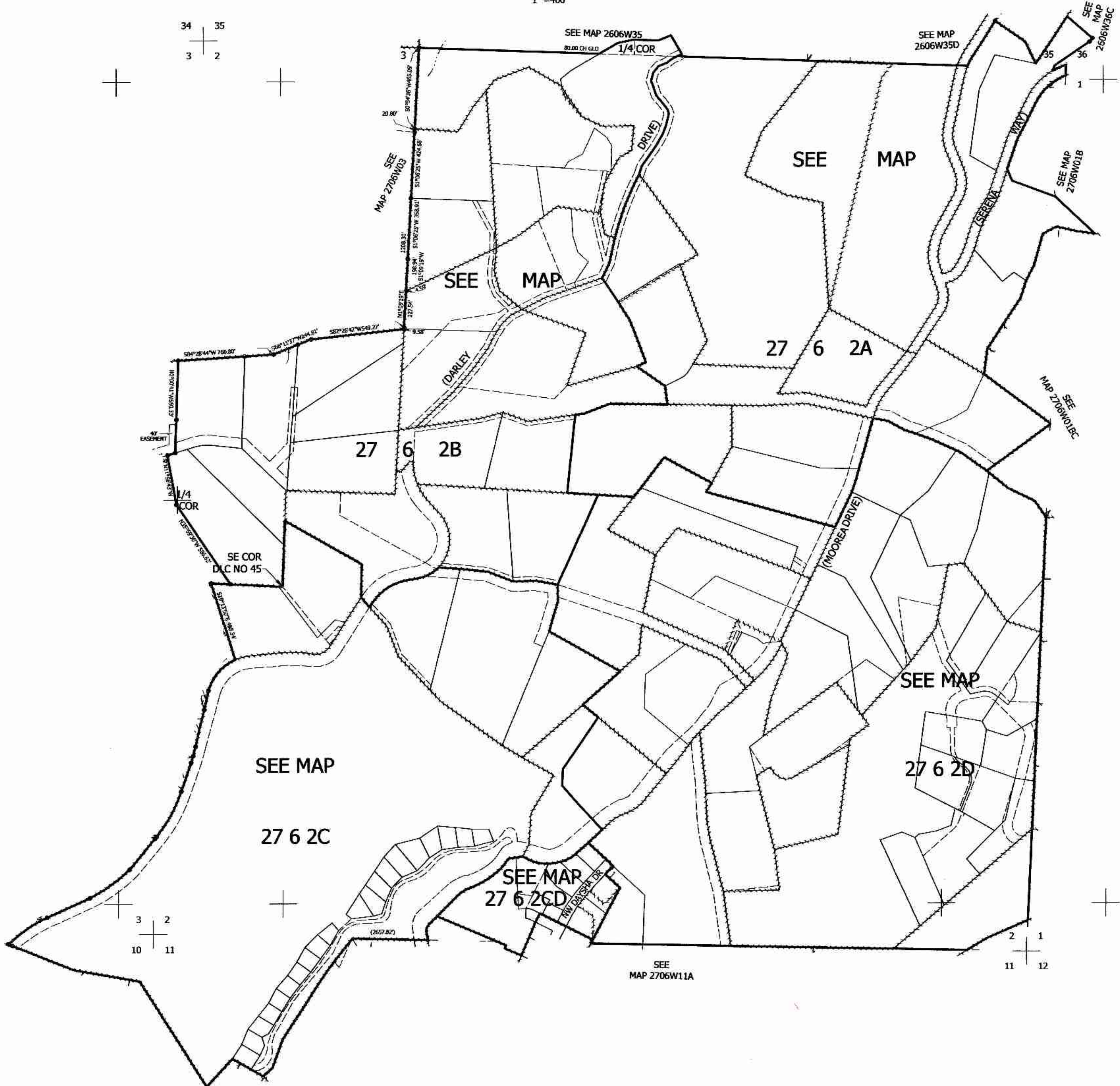


T.27S. R.06W. W.M.
DOUGLAS COUNTY
1" = 400'

THIS MAP WAS PREPARED FOR
ASSESSMENT PURPOSE ONLY.

Upper Left:
123°23'36"W 43°15'32"N
4150721E 593634N ft.



34 35
3 2

35 36
1 1

3 2
10 11

2 1
11 12