

SW1/4 NW1/4 SEC.1 T.27S. R.6W. W.M.
DOUGLAS COUNTY

REVISED ON
3-11-10

27 6 1BC
ROSEBURG

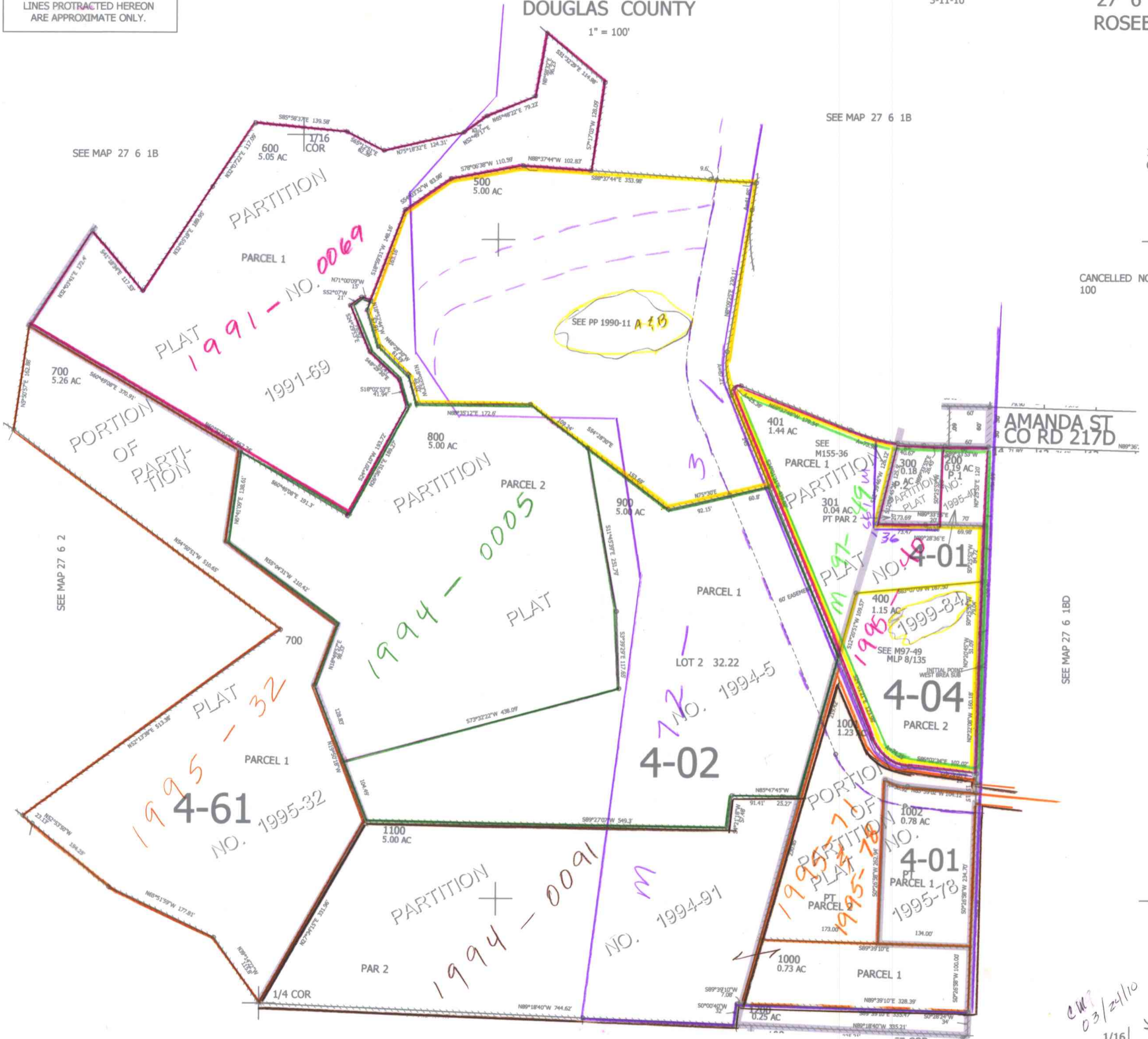
LINES PROTRACTED HEREON
ARE APPROXIMATE ONLY.

1" = 100'

SEE MAP 27 6 1B

1/16
COR

CANCELLED NO'S
100



SEE MAP 27 6 1B

SEE MAP 27 6 2

SEE MAP 27 6 1BD

SEE MAP 27 6 1CB

4,158,000

590,500

1/16
COR

CW?
03/2/10
JCV

27 6 1BC
ROSEBURG