

THIS MAP WAS PREPARED FOR ASSESSMENT PURPOSE ONLY.

NW1/4 SEC.1 T.27S. R.6W. W.M. DOUGLAS COUNTY

REVISED ON 3-11-10

27 6 1B & INDEX ROSEBURG

4-61

1" = 200'

CANCELLED NO'S 101 100 702

1/4 COR

SEE MAP 27 6 1

SEE MAP 27 6 1AC

591,000

CEN SEC

27 6 1B & INDEX ROSEBURG

SEE MAP 26 6 36C

SEE MAP 26 6 36C

SEE MAP 27 6 2

SEE MAP 27 6 1BA

SEE MAP

SEE U.S. MAP

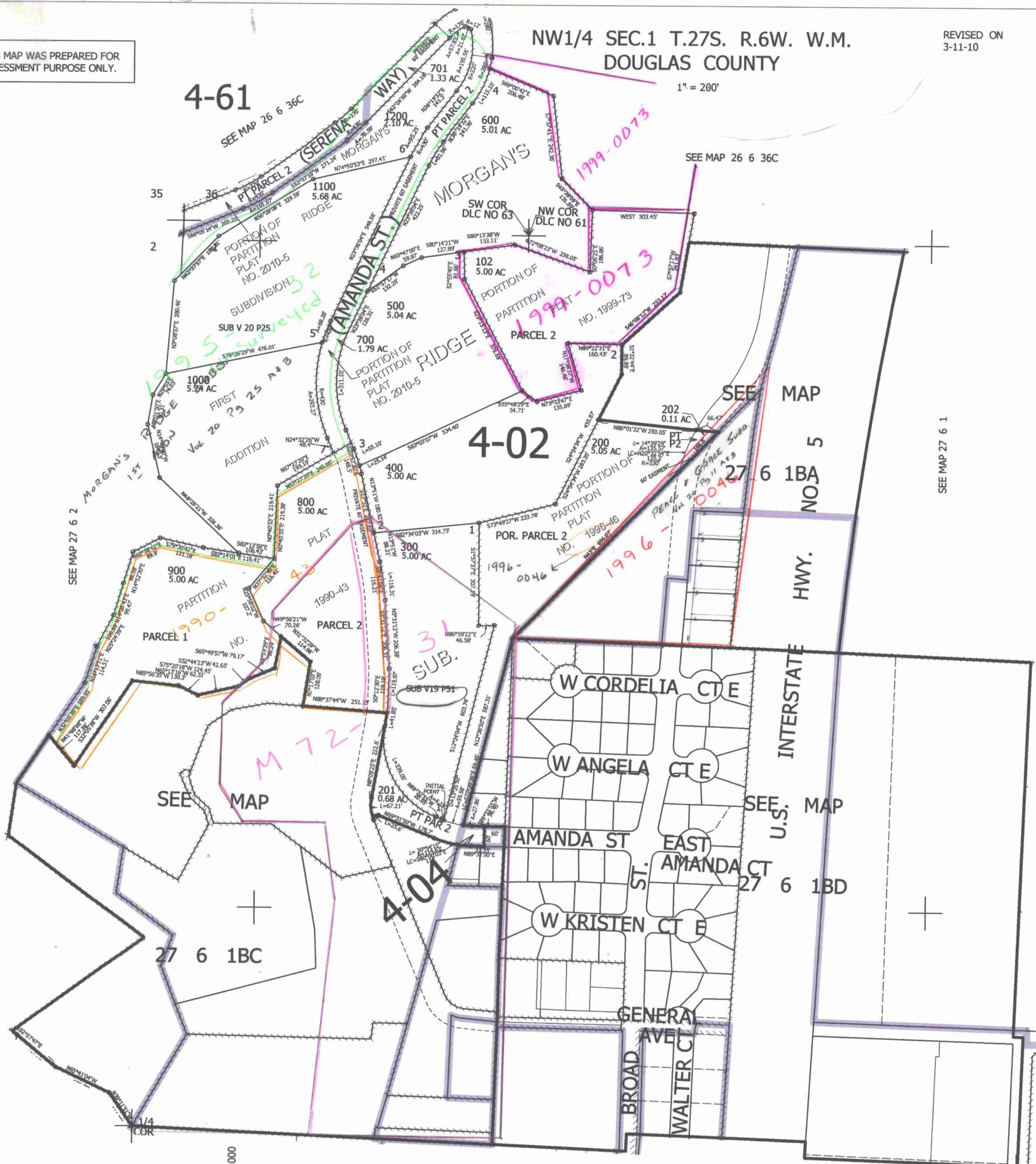
27 6 1BC

27 6 1BD

SEE MAP 27 6 1CB

SEE MAP 27 6 1CA

4,158,000



4-02

4-04

1995 surveyed
SUB V 20 P25
Vol 20 25 A+B

1999-0073

1999-0073

1996-0046

31 SUB.

M 72

1990-43

W CORDELIA CTE

W ANGELA CTE

AMANDA ST

W KRISTEN CTE

GENERAL AVE

BROAD WALTER CT

INTERSTATE HWY.

SW COR DLC NO 63

NW COR DLC NO 61

35

2

3

4

5

6

7

8

9

10

11

12

13

14

15

16

17

18

19

20

21

22

23

24

25

26

27

28

29

30

31

32

33

34

35

36

37

38

39

40

41

42

43

44

45

46

47

48

49

50

51

52

53

54

55

56

57

58

59

60

61

62

63

64

65

66

67

68

69

70

71

72

73

74

75

76

77

78

79

80

81

82

83

84

85

86

87

88

89

90

91

92

93

94

95

96

97

98

99

100

101

102

103

104

105

106

107

108

109

110

111

112

113

114

115

116

117

118

119

120

121

122

123

124

125

126

127

128

129

130

131

132

133

134

135

136

137

138

139

140

141

142

143

144

145

146

147

148

149

150

151

152

153

154

155

156

157

158

159

160

161

162

163

164

165

166

167

168

169

170

171

172

173

174

175

176

177

178

179

180

181

182

183

184

185

186

187

188

189

190

191

192

193

194

195

196

197

198

199

200

201

202

203

204

205

206

207

208

209

210

211

212

213

214

215

216

217

218

219

220

221

222

223

224

225

226

227

228

229

230

231

232

233

234

235

236

237

238

239

240

241

242

243

244

245

246

247

248

249

250

251

252

253

254

255

256

257

258

259

260

261

262

263

264

265

266

267

268

269

270

271

272

273

274

275

276

277

278

279

280

281

282

283

</