

THIS MAP WAS PREPARED FOR ASSESSMENT PURPOSE ONLY

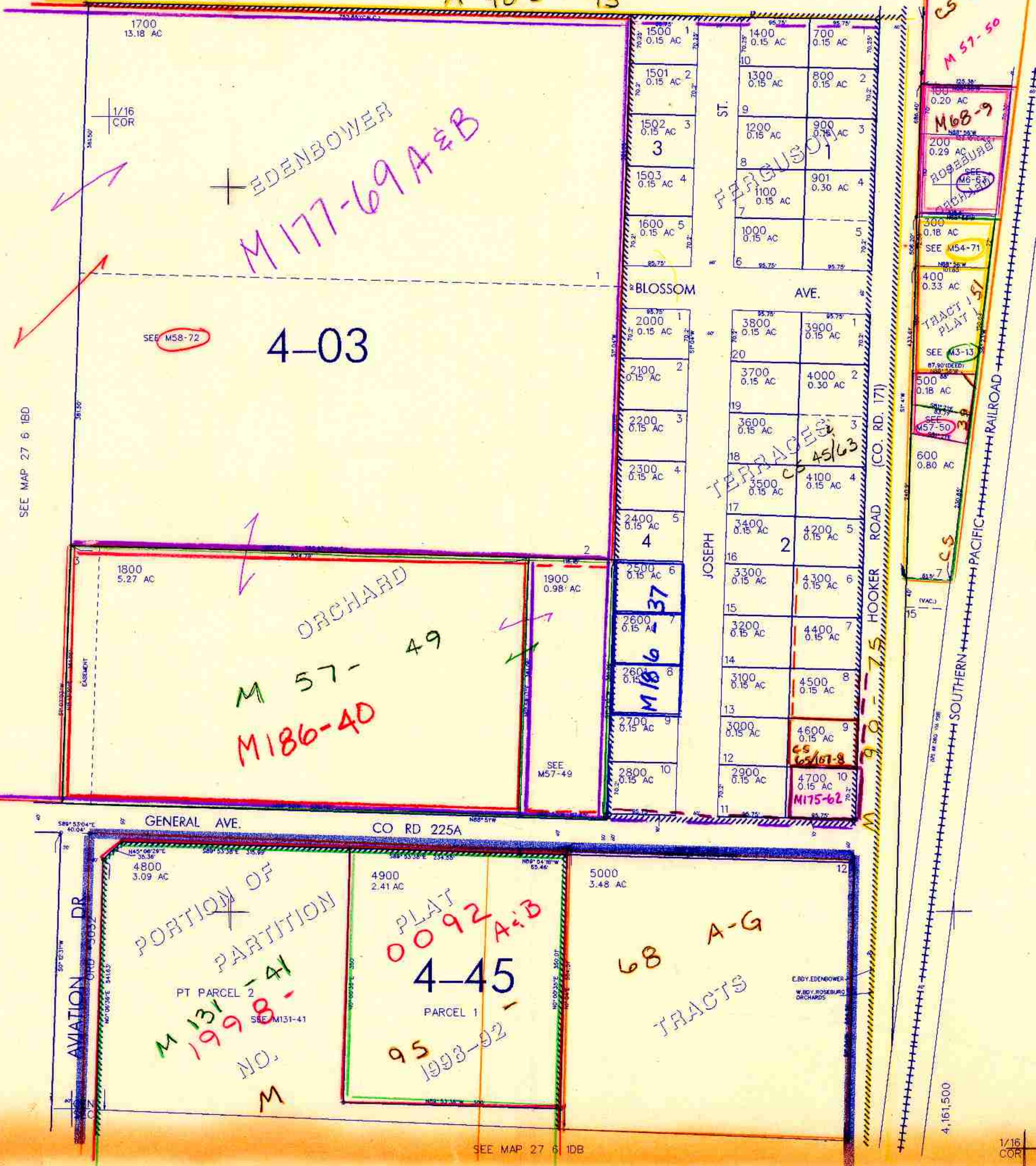
SW1/4 NE1/4 SEC. 1 T.27S. R.6 W W.M. DOUGLAS COUNTY

REVISED ON 11-16-99

27 6 1AC ROSEBURG

SEE MAP 27 6 1

M 90 - 75



SEE MAP 27 6 1BD

CANCELLED NO'S

SEE MAP 27 6 1AD

590,500

SEE MAP 27 6 1DB

27 6 1AC ROSEBURG