

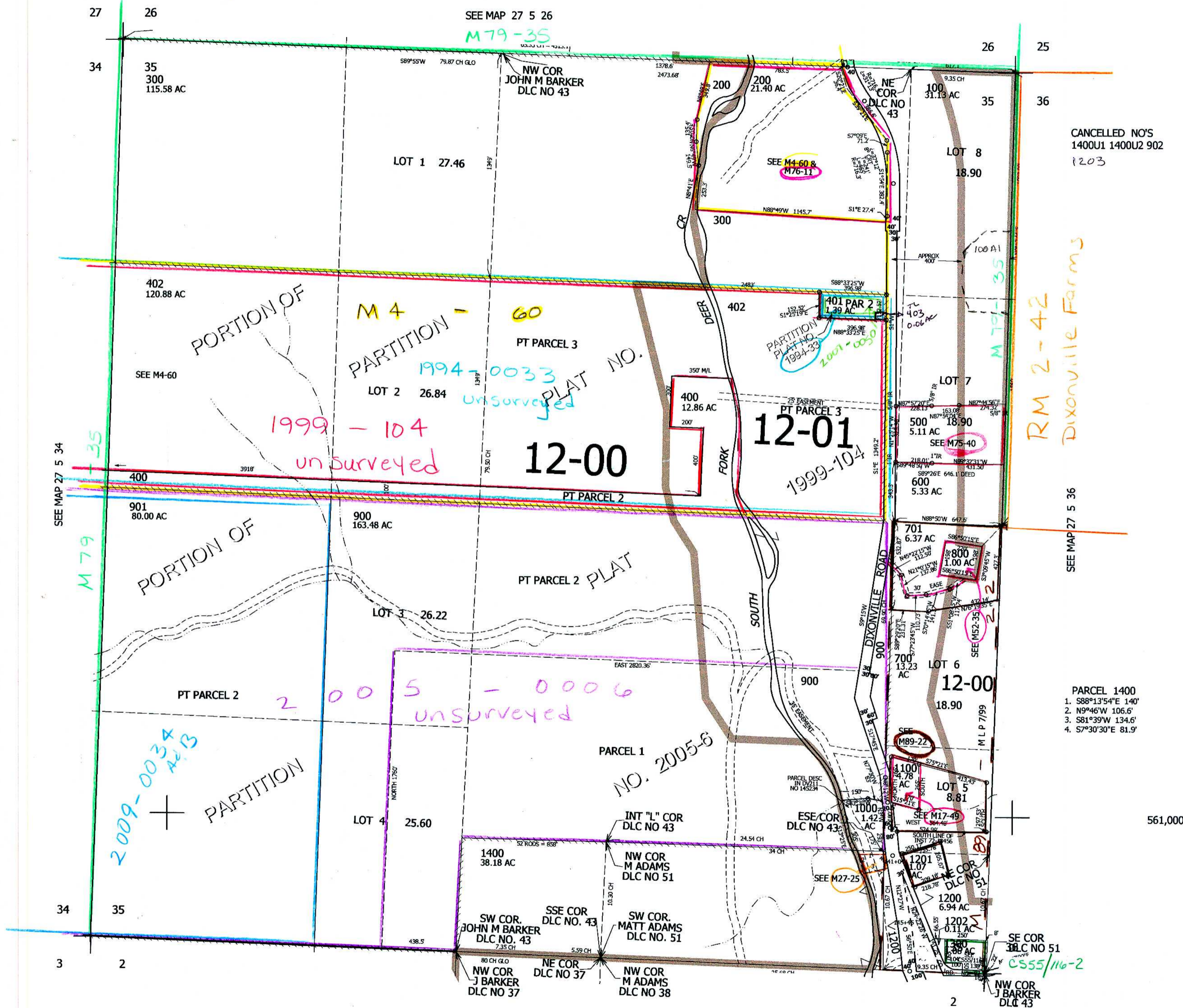
THIS MAP WAS PREPARED FOR ASSESSMENT PURPOSE ONLY.

SEC.35 T.27S. R.5W. W.M. DOUGLAS COUNTY

1" = 400'

REVISED ON 9-18-06

27 5 35



CANCELLED NO'S 1400U1 1400U2 902 1203

RM 2-42 Dixonville Farms

SEE MAP 27 5 36

PARCEL 1400

1. S88°13'54"E 140'
2. N9°46'W 106.6'
3. S81°39'W 134.6'
4. S7°30'30"E 81.9'

561,000

SEE MAP 28 5 2

4,189,000

10/2006 27 5 35