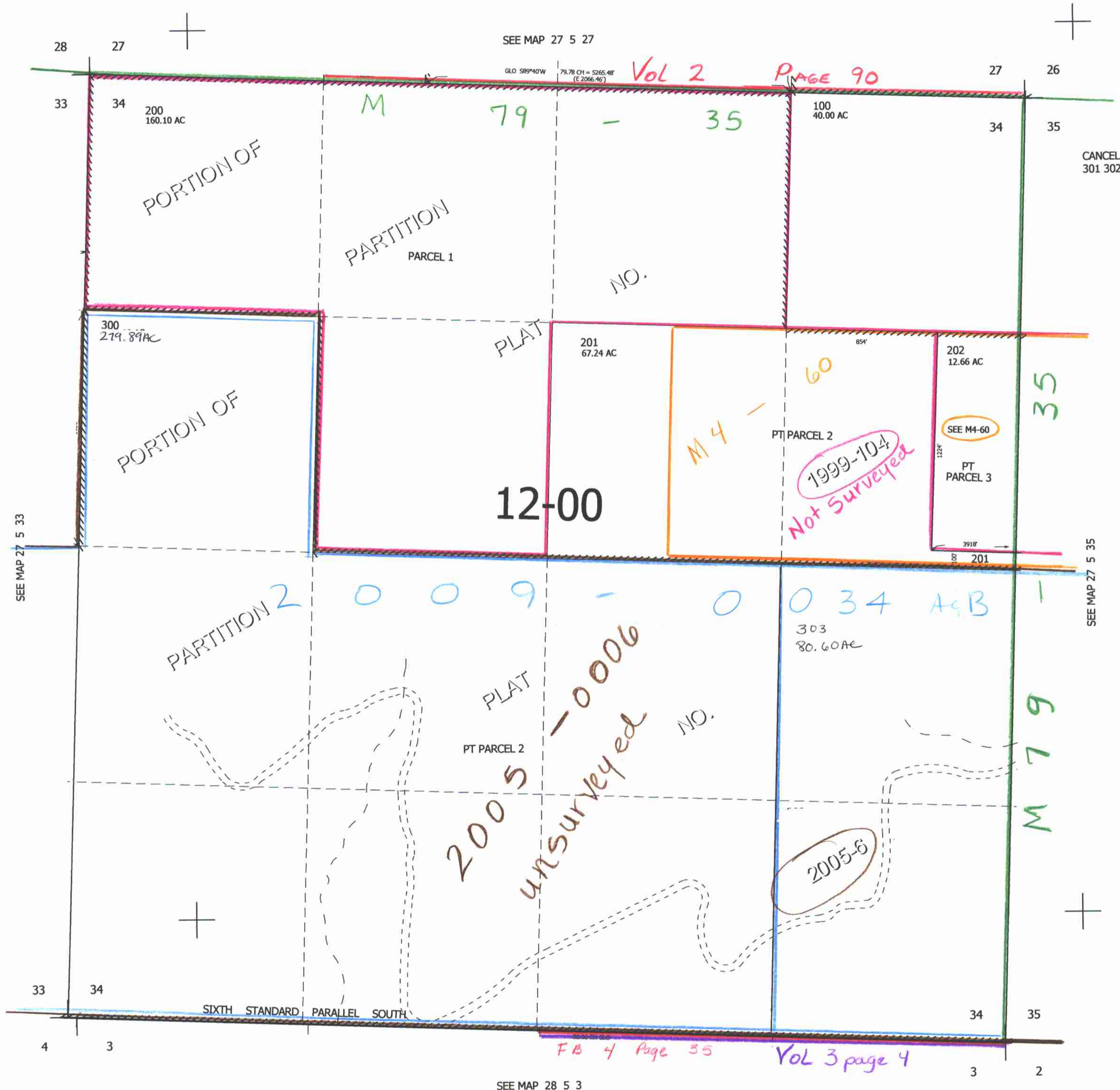


THIS MAP WAS PREPARED FOR ASSESSMENT PURPOSE ONLY.

SEC.34 T.27S. R.5W. W.M.
DOUGLAS COUNTY
1" = 400'

REVISED ON
3-2-05

27 5 34



SEE MAP 27 5 33

SEE MAP 27 5 35

SEE MAP 27 5 27

SEE MAP 28 5 3

FB 4 Page 35

Vol 3 page 4

4,184,000

27 5 34

561,000

✓