

This map was prepared for assessment purpose only.

SECTION 26 T.27S. R.5 W. W.M.

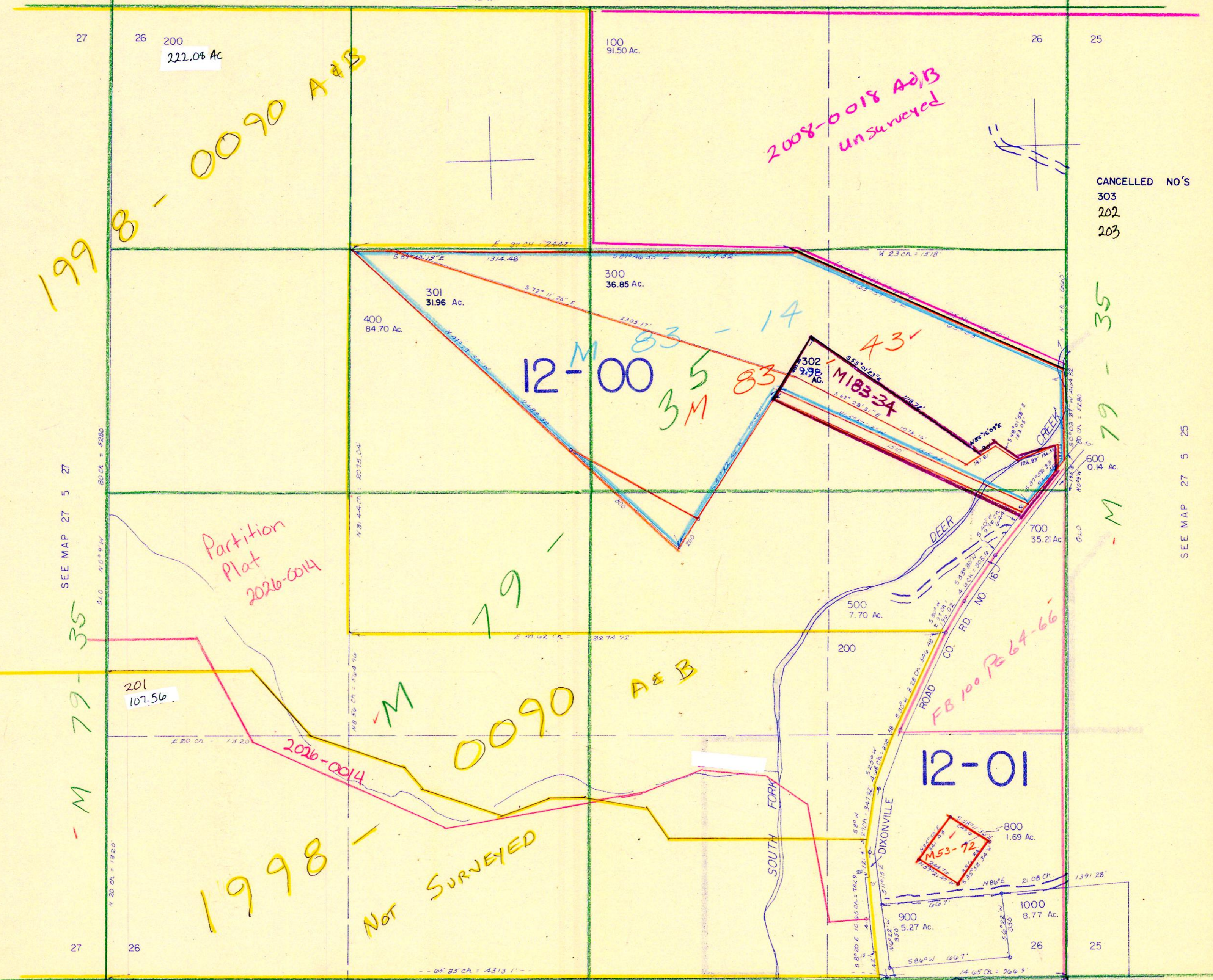
DOUGLAS COUNTY

REVISED ON 3-27-92

27 5 26

SEE MAP 27 5 23

M 79-35



1998-0090 A+B

2008-0018 A+B
Unsurveyed

12-00
83-14
3M
43'

Partition Plat
2026-0014

M 79-35

M 79-35
A & B

1998-
NOT SURVEYED

12-01

M 53-72

NW COR.
DLC NO. 43
SEE MAP 27 5 35

NE COR.
J. M. BARKER
DLC NO. 43

M 79-35

CANCELLED NO'S
303
202
203

SEE MAP 27 5 25

570,000

565,000

27 5 26

4/12/03