

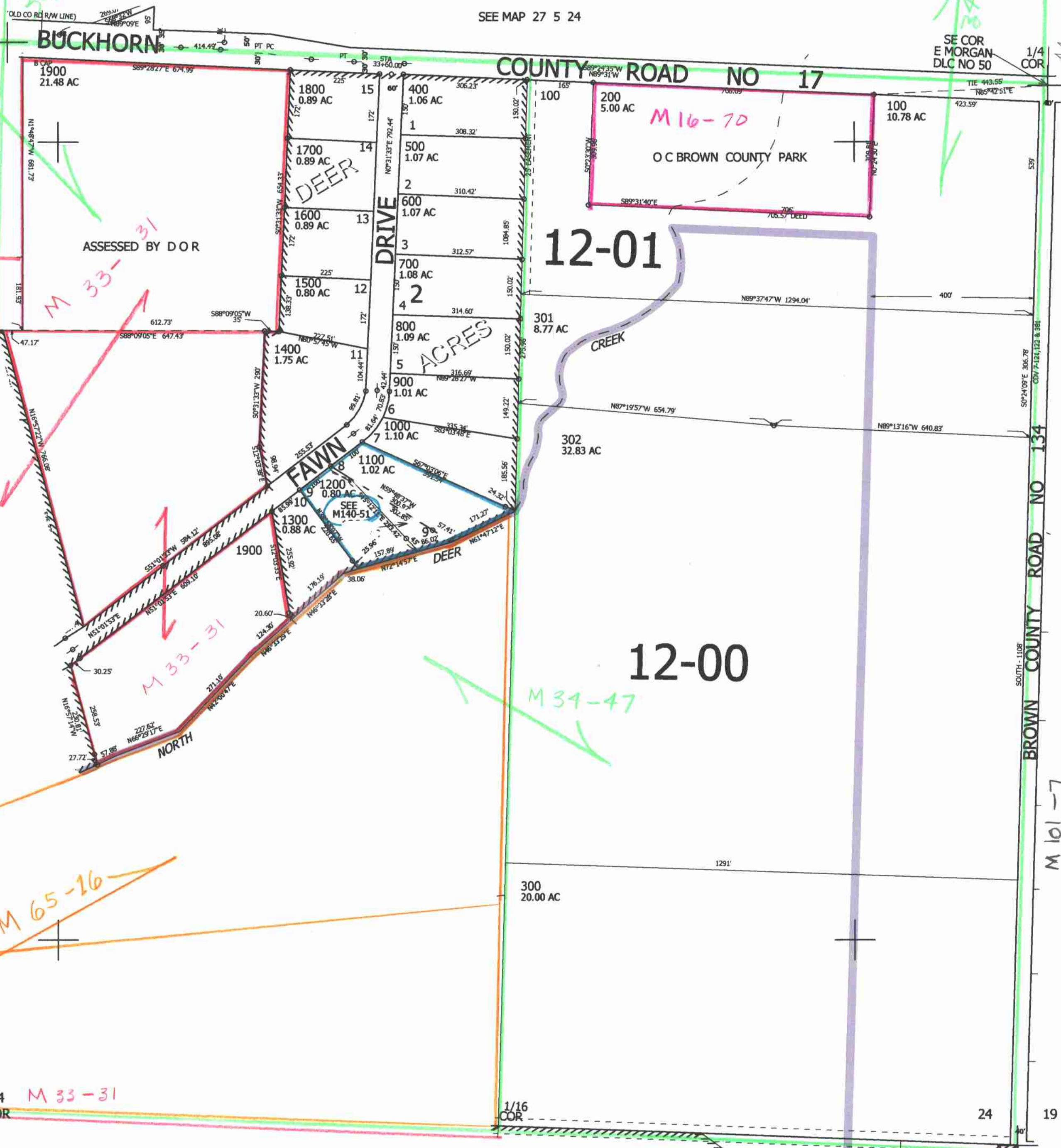
THIS MAP WAS PREPARED FOR ASSESSMENT PURPOSE ONLY.

SE1/4 SEC.24 T.27S. R.5W. W.M.
DOUGLAS COUNTY
1" = 200'

REVISED ON
8-18-05

27 5 24D

SEE MAP 27 5 24



CANCELLED NO'S
1101 1201

SEE MAP 27 4 19

571,000

SEE MAP 27 5 25

4,194,000

27 5 24D

10/25/05