

This map was prepared for assessment purpose only.

SECTION 24 T.27S. R. 5W. W.M.
DOUGLAS COUNTY

1" = 400'

27 5 24
8 INDEX

M 168A-44
M 52-58

SEE MAP 27 5 23A

M 52-79
M 52-58
1990-0029
(DLC 1/4 COR)

M 79-35

SEE MAP 27 5 23

M 79-35

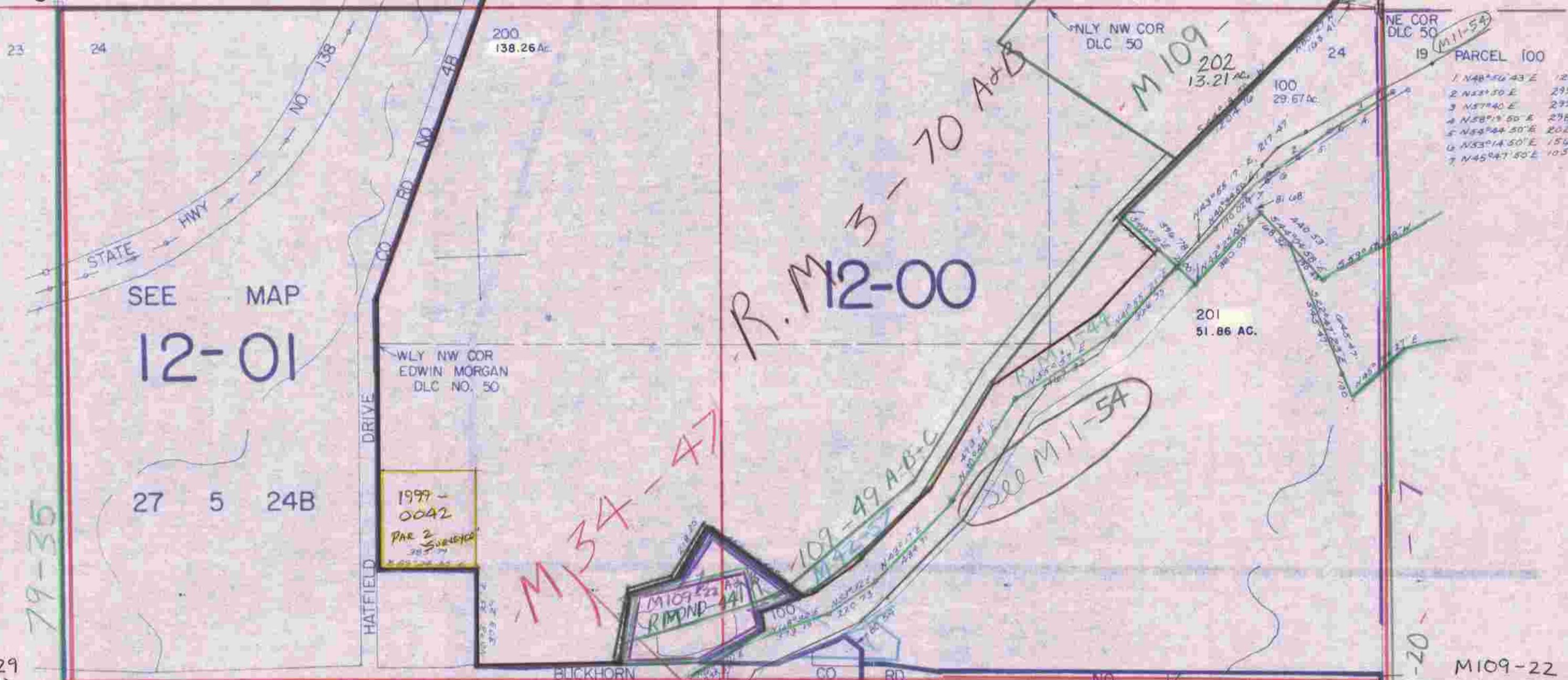
SEE MAP 27 5 13C

SEE MAP 27 5 13

M 109-49

49A-B-C
Range 5W
Range 4W

M 109-44
M 109-49
M 109-22
M 101-26



NE COR DLC 50
PARCEL 100

1	N45°47'50"E	128.57
2	N53°14'50"E	299.07
3	N57°40'E	299.07
4	N58°19'50"E	298.50
5	N58°24'50"E	202.37
6	N53°14'50"E	154.54
7	N45°47'50"E	105.81

M 101
PARCEL 300

1	N72°43'53"E	78.83
2	S 78°09'07"E	161.30
3	S 73°50'41"E	149.91
4	N66°31'34"E	205.01
5	S 57°18'37"E	195.07
6	N 78°07'41"E	74.07
7	N 43°01'06"E	227.04
8	N 61°29'17"E	227.62
9	N 42°00'47"E	271.10
10	N 46°33'29"E	124.31
11	N 46°33'25"E	176.19
12	N 72°14'57"E	282.11
13	N 61°47'12"E	177.37

575.000

SEE MAP 27 4 19

M 109-22
M 109-49

M 1-20 - 7

SEE MAP

M 34-47

Approx Location
GPS STA. DIXON
CS FILE 65/31-25

M 33-31

M 33-31

SEE MAP 27 5 25

27 5 24
& INDEX

N.S.
8/14