

THIS MAP WAS PREPARED FOR ASSESSMENT PURPOSE ONLY.

NE1/4 NW1/4 SEC.23 T.27S. R.5W. W.M.  
DOUGLAS COUNTY

REVISED ON  
8-2-19

27 5 23BA

SEE MAP 27 5 14

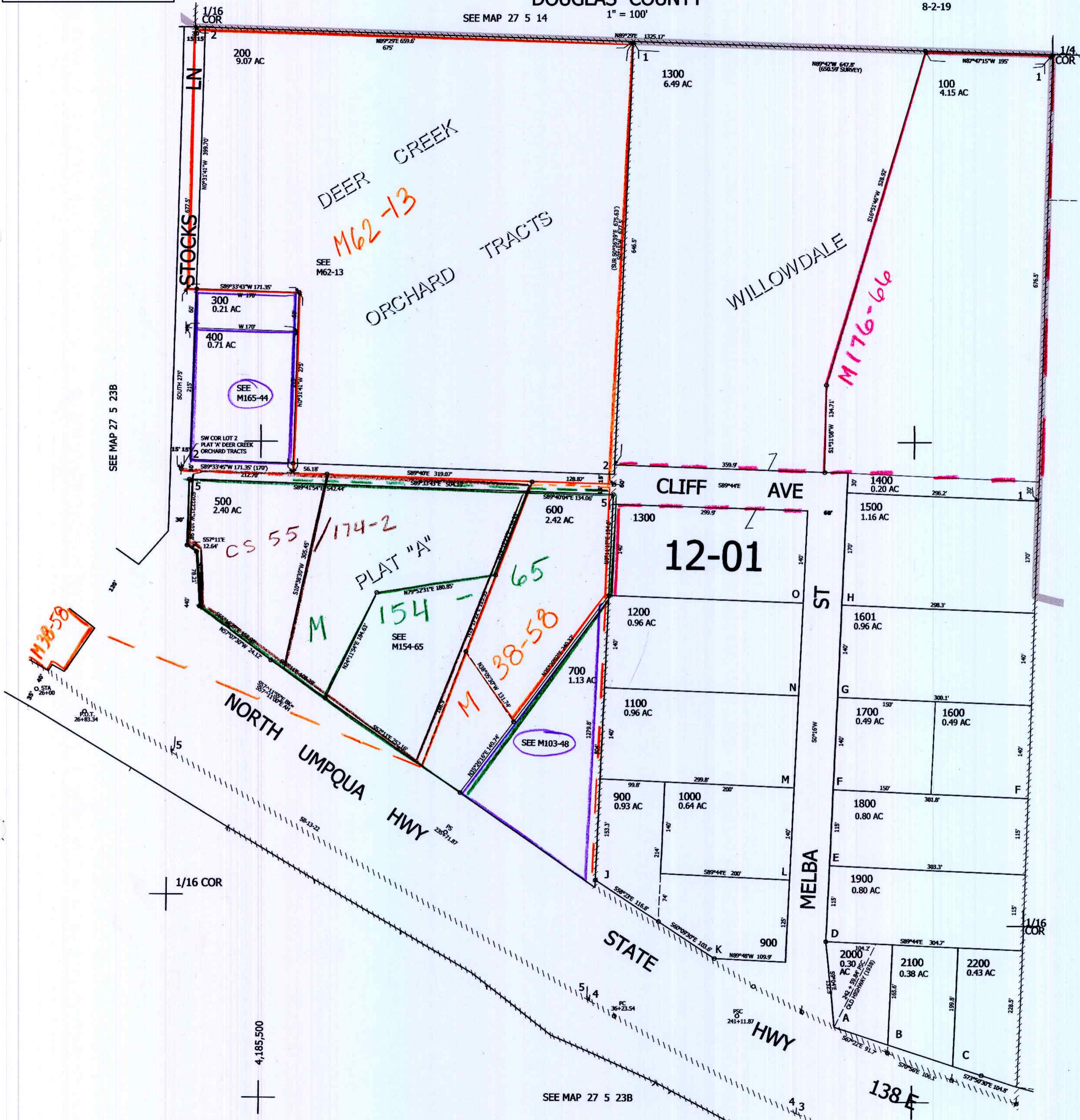
1" = 100'

CANCELLED NO'S  
800 501 101

SEE MAP 27 5 23B

SEE MAP 27 5 23A

SEE MAP 27 5 23B



8-16-19  
JCL

27 5 23BA

574,000