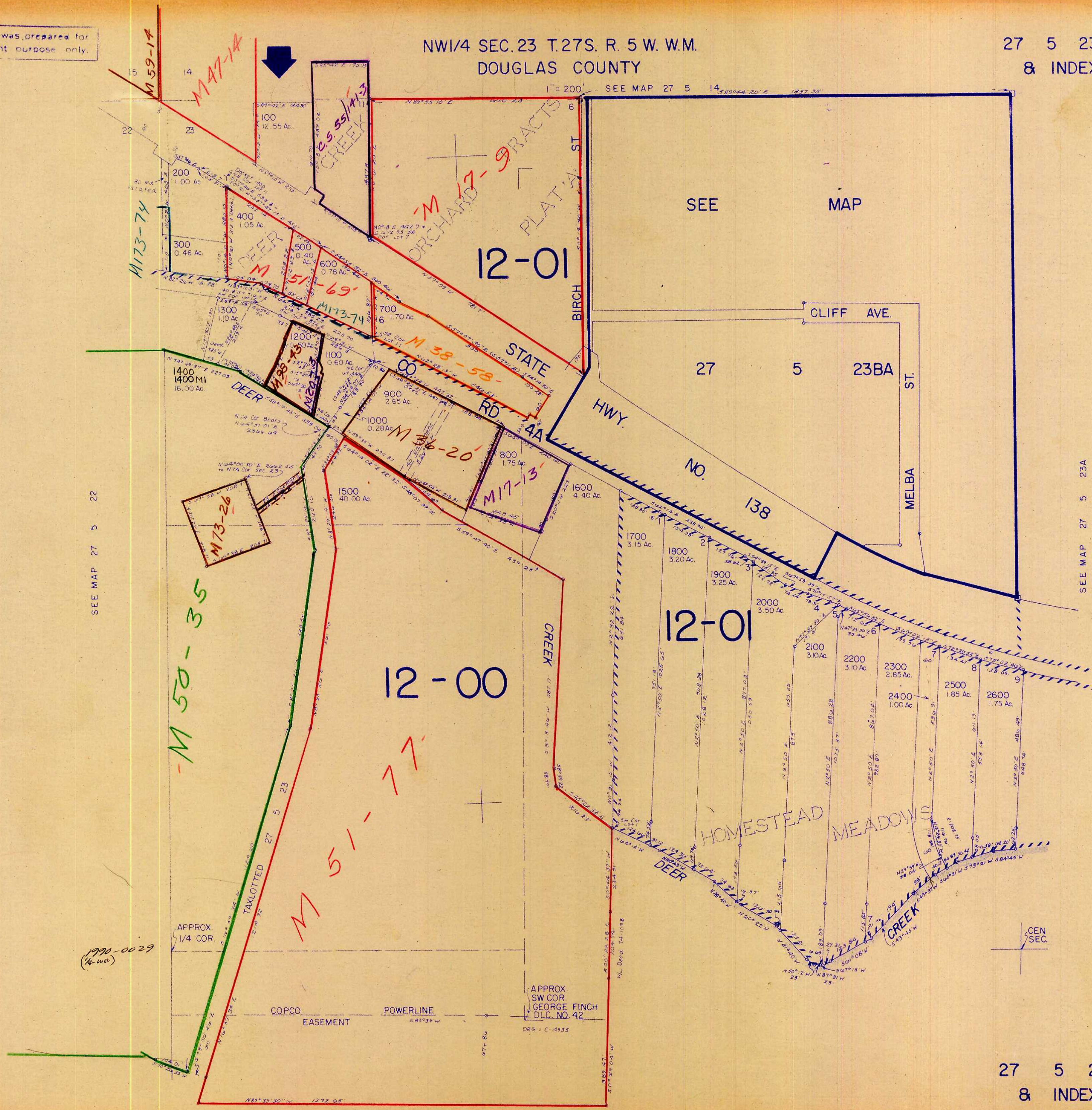


This map was prepared for assessment purpose only.

NW1/4 SEC. 23 T. 27S. R. 5 W. W.M.
DOUGLAS COUNTY

27 5 23B
& INDEX

1" = 200' SEE MAP 27 5 14



SEE MAP 27 5 22

SEE MAP 27 5 23A

1990-0029
(h.w.c.)

APPROX. SW COR. GEORGE FINCH D.L.C. NO. 42
DRG - C-4935

27 5 23B
& INDEX

SEE MAP 27 5 23

1/11/28
666,000