

THIS MAP WAS PREPARED FOR ASSESSMENT PURPOSE ONLY.

NE1/4 SEC.23 T.27S. R.5W. W.M.
DOUGLAS COUNTY

REVISED ON
12-2-08

27 5 23A

1" = 200'

SEE MAP 27 5 14

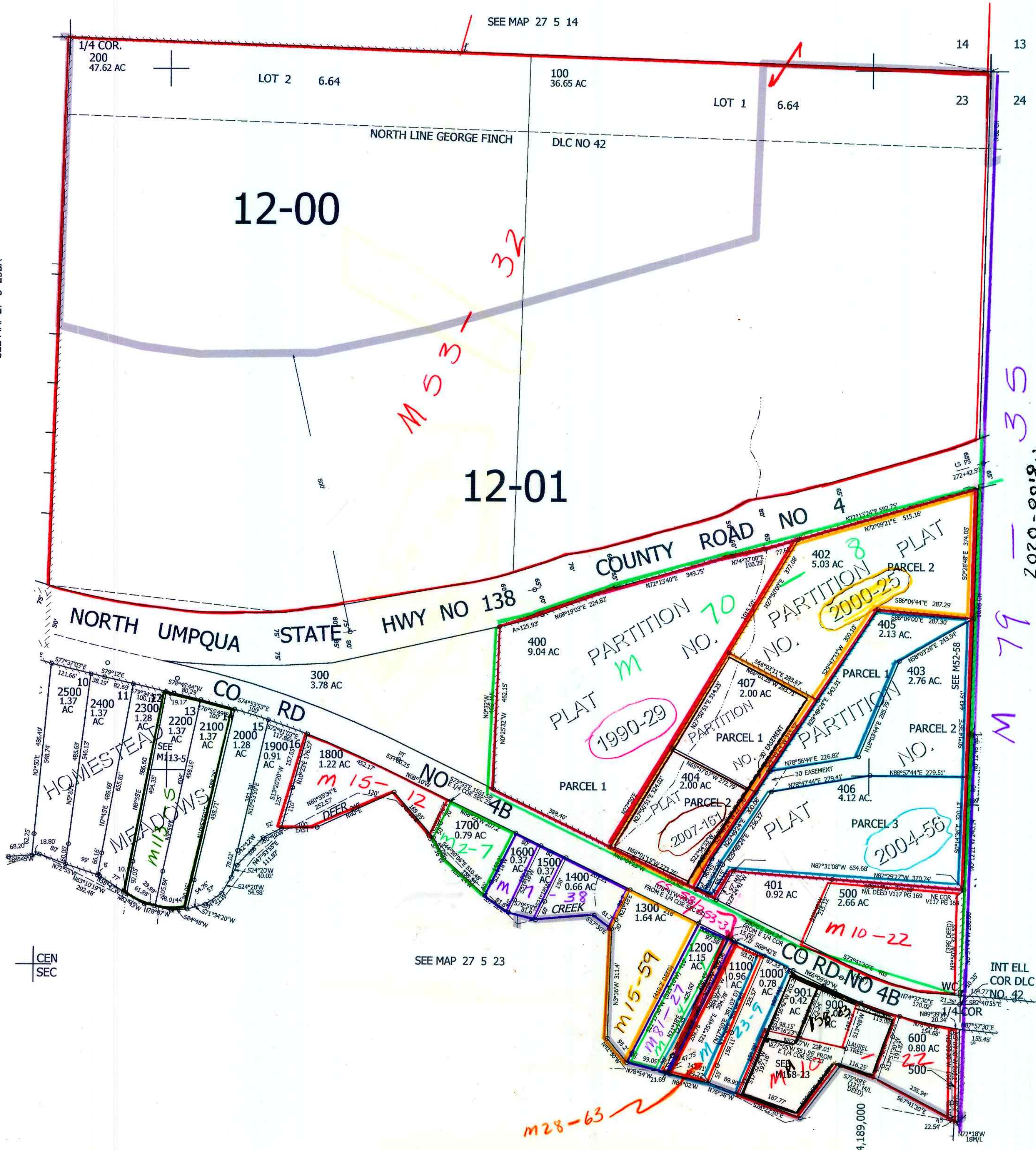
SEE MAP 27 5 23BA

SEE MAP 27 5 23B

SEE MAP 27 5 23

CANCELLED NO'S
900A1 700 800

2020-0018A
SEE MAP 27 5 24B



574,000

cm
01/16/08
JCV

27 5 23A