

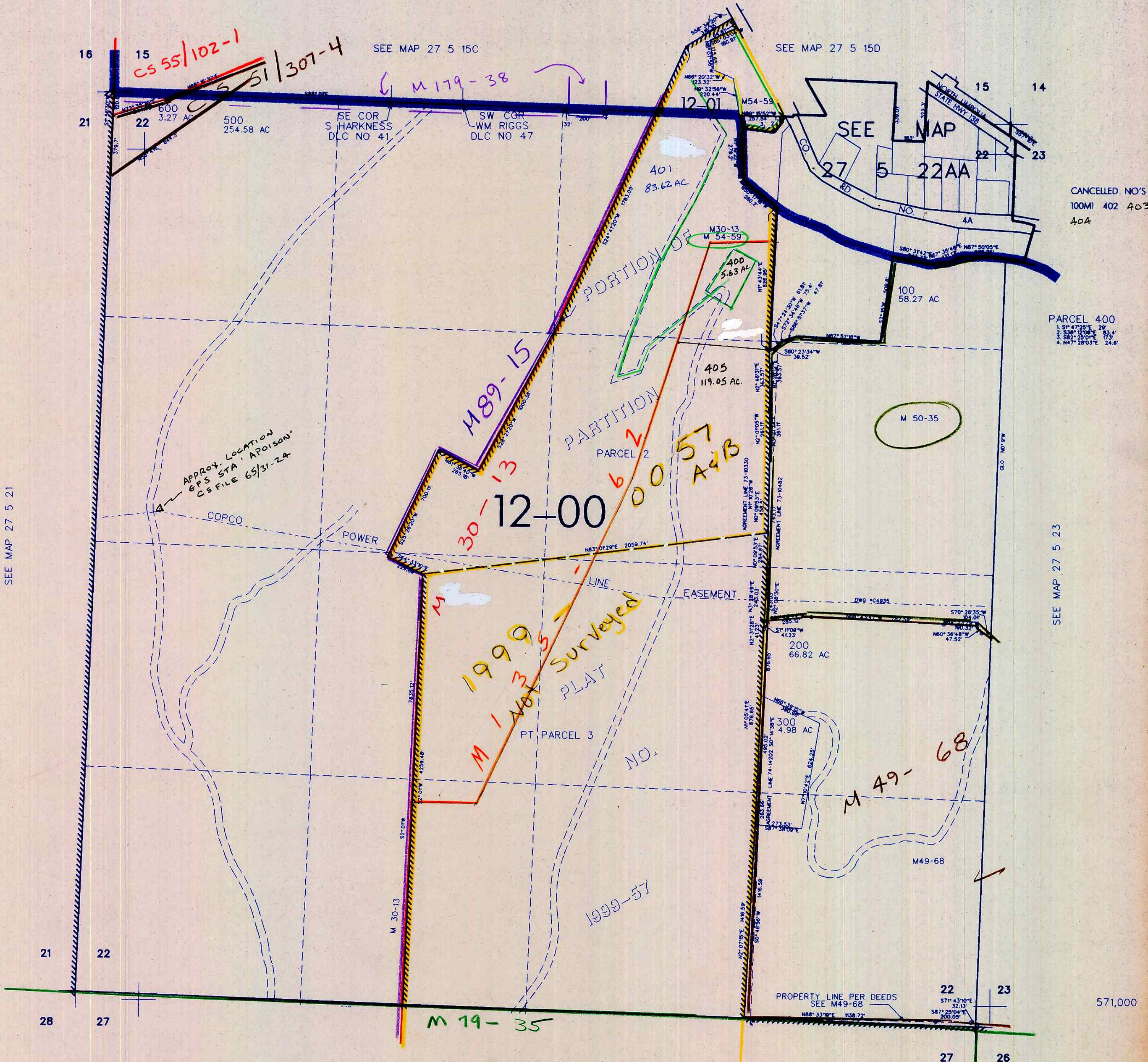
THIS MAP WAS PREPARED FOR ASSESSMENT PURPOSE ONLY

SEC. 22 T.27S. R.5 W W.M. DOUGLAS COUNTY

REVISED ON 6-21-99

27 5 22 & INDEX

1" = 400'



CANCELLED NO'S 100MI 402 403 404

PARCEL 400 1. S1° 47' 25" E 20' 2. S2° 25' 00" E 82.4' 3. S2° 25' 00" E 17.9' 4. N47° 28' 03" E 24.8'

SEE MAP 27 5 21

SEE MAP 27 5 23

SEE MAP 27 5 27

4,184,000

27 5 22 & INDEX 571,000 200.00' 587° 28' 04" E 32.13' 571° 43' 10" E 32.13' 587° 33' 18" E 1138.72'

208/99