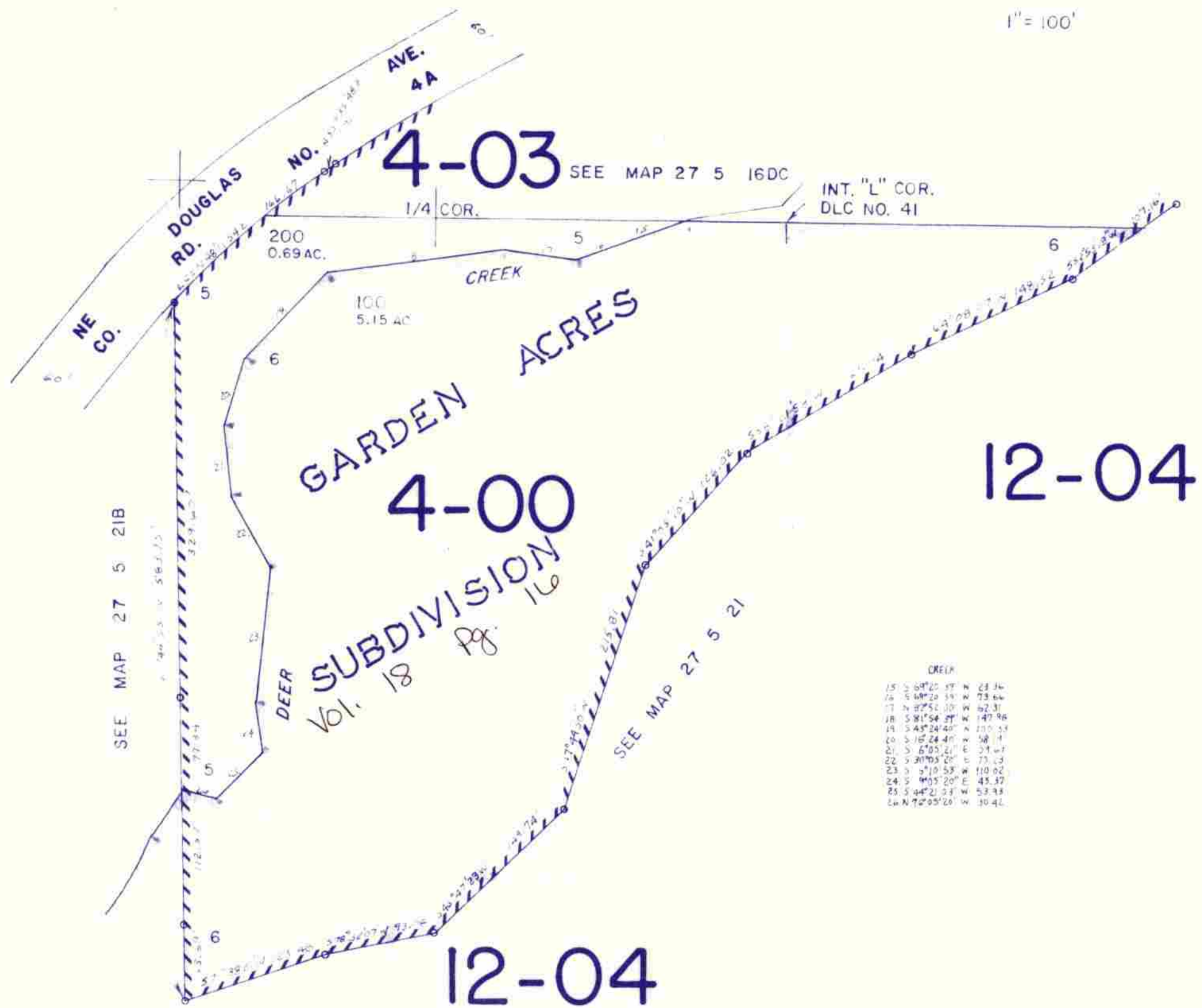


THIS MAP WAS PREPARED FOR
ASSESSMENT PURPOSE ONLY.

NW1/4NE1/4 SEC.21 T.27S. R.5W. WM.
DOUGLAS COUNTY

1" = 100'

27 5 21AB
ROSEBURG



CREEK

25	S 64°25' 17"	N	23.34
26	S 64°25' 17"	N	73.64
27	N 87°52' 00"	W	42.31
28	S 81°54' 27"	W	147.96
29	S 43°54' 40"	N	110.17
30	S 10°24' 40"	W	38.11
31	S 67°03' 41"	E	21.47
32	S 30°03' 20"	E	73.13
33	S 21°0' 58"	W	110.92
34	S 85°5' 20"	E	45.32
35	S 44°2' 23"	W	53.93
36	N 72°05' 28"	W	30.42

SW COR.
S. HARKNESS
DLC NO. 41

SLY SE COR.
DLC NO. 41

575,500

1,256,000

SE COR.
DLC NO. 45

NE COR.
DLC NO. 46

1/16 COR.

1/16 COR.

27 5 21AB
ROSEBURG

8/11/00