

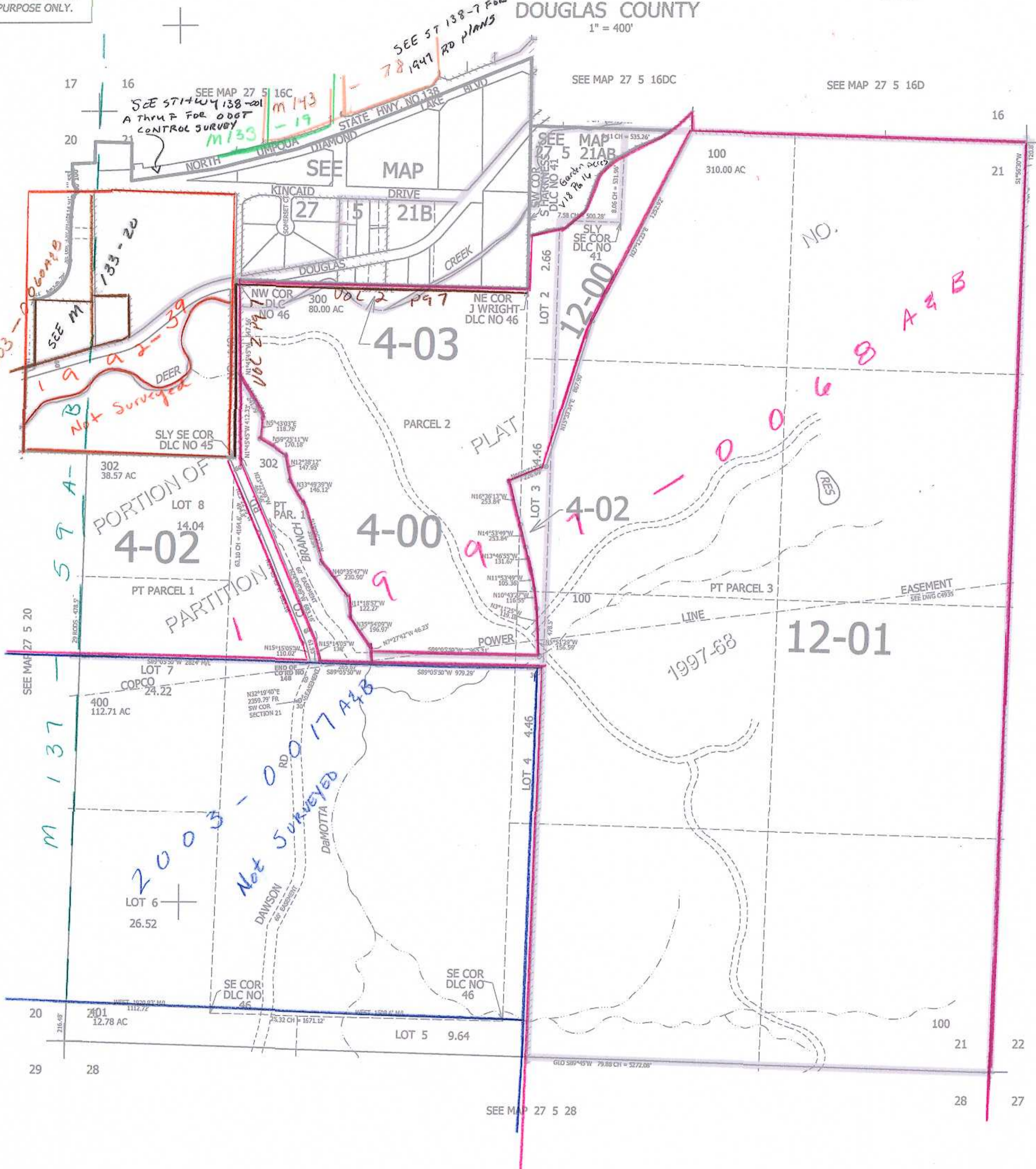
THIS MAP WAS PREPARED FOR ASSESSMENT PURPOSE ONLY.

SEC.21 T.27S. R.5W. W.M.
DOUGLAS COUNTY

REVISED ON
3-16-16

27 5 21
& INDEX

1" = 400'



CANCELLED NO'S
101 201 301
200 303 102

PARCEL 100

1. S44°13'12"W 115.46'
2. S52°53'28"W 107.16'
3. S64°08'07"W 148.52'
4. S58°21'58"W 161.09'
5. S41°05'10"W 126.02'
6. S17°44'50"W 215.81'
7. S45°47'23"W 149.74'
8. S78°32'07"W 93.08'
9. S70°38'21"W 123.48'

SEE MAP 27 5 22

572,000

SEE MAP 27 5 28

4,179,000

AM 3/16/16
JCV
27 5 21
& INDEX