

THIS MAP WAS PREPARED FOR ASSESSMENT PURPOSE ONLY.

NW1/4 SW1/4 SEC.20 T.27S. R.5W. W.M. DOUGLAS COUNTY

REVISED ON 7-11-95

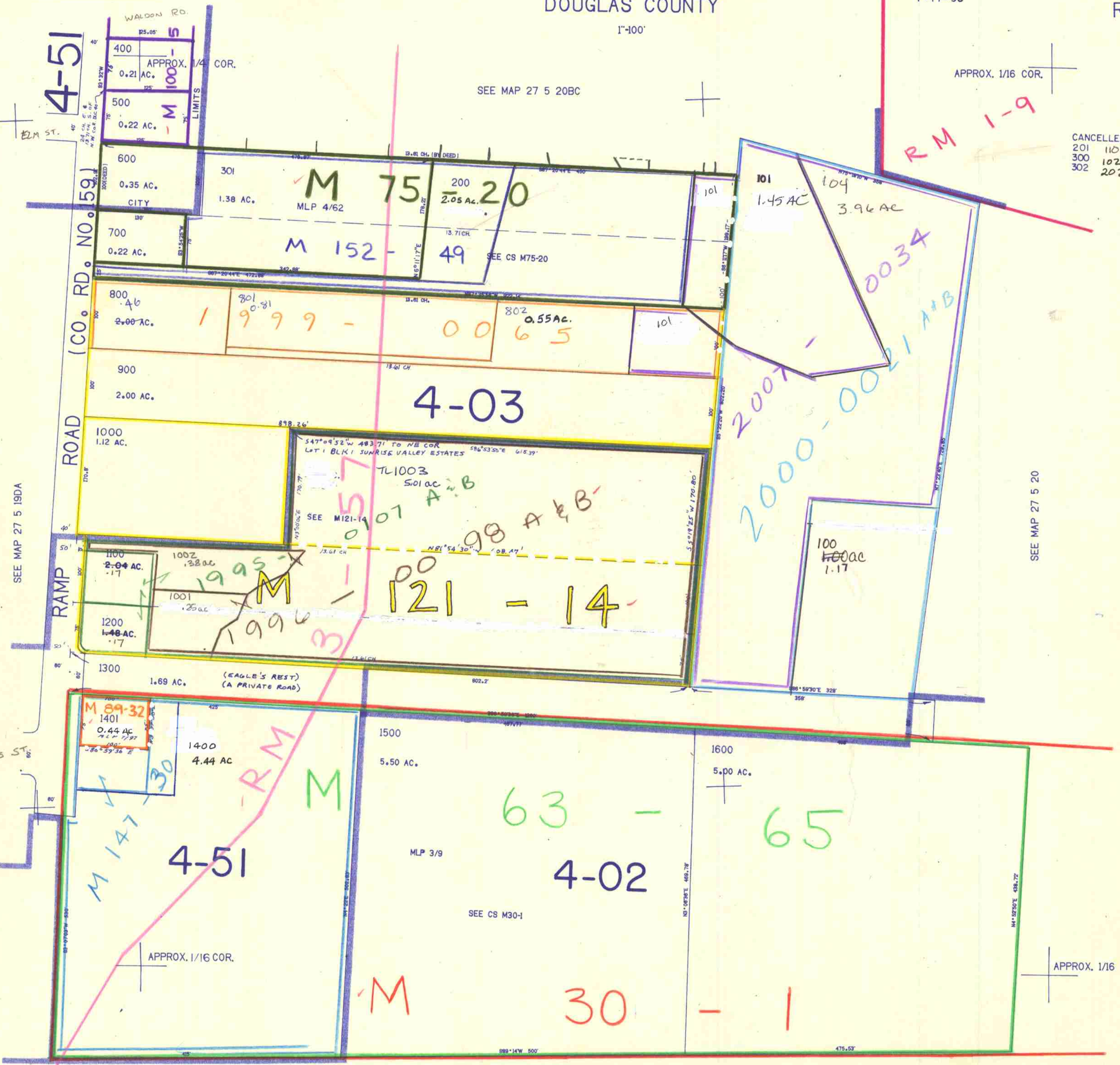
27 5 20CB ROSEBURG

1"=100'

APPROX. 1/16 COR.

SEE MAP 27 5 20BC

CANCELLED	NO'S
201	1101 1201
300	102 103
302	202 803



SEE MAP 27 5 19DA

SEE MAP 27 5 20

573.000

CHECKED

LAYOUT

CONTROL

SEE MAP 27 5 20

27 5 20CB ROSEBURG

7/14 SM /95