

THIS MAP WAS PREPARED FOR ASSESSMENT PURPOSE ONLY.

SW1/4 NW1/4 SEC.20 T.27S. R.5W. W.M.  
SUPPLEMENTAL  
DOUGLAS COUNTY  
1" = 50'

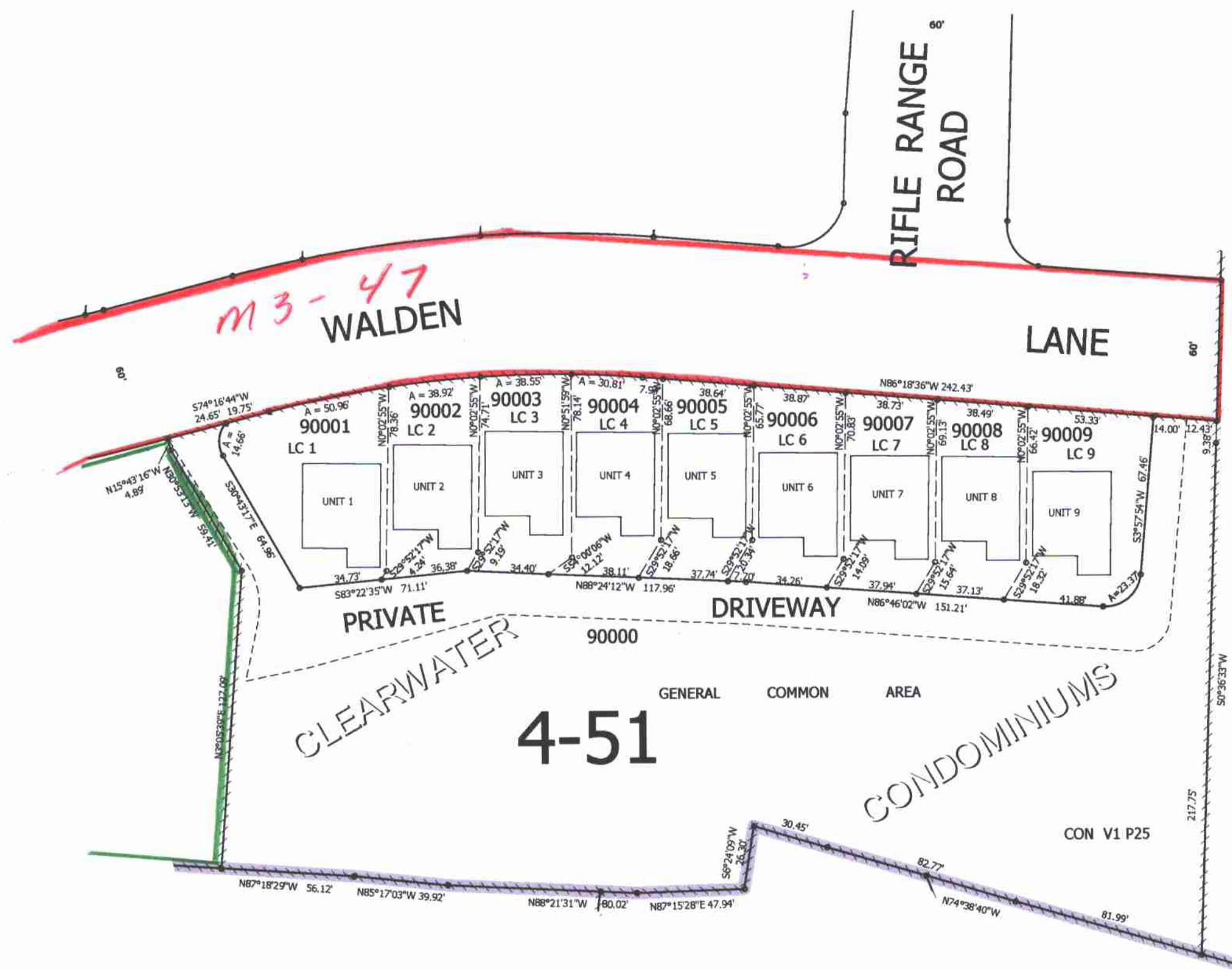
REVISED ON

27 5 20BC  
SUPPLEMENTAL  
ROSEBURG

CANCELLED NO'S

SEE MAP 27 5 20BC

SEE MAP 27 5 20BC



SEE MAP 27 6 20BD

SEE MAP 27 5 20CB

cm 8/15/07

27 5 20BC  
SUPPLEMENTAL  
ROSEBURG