

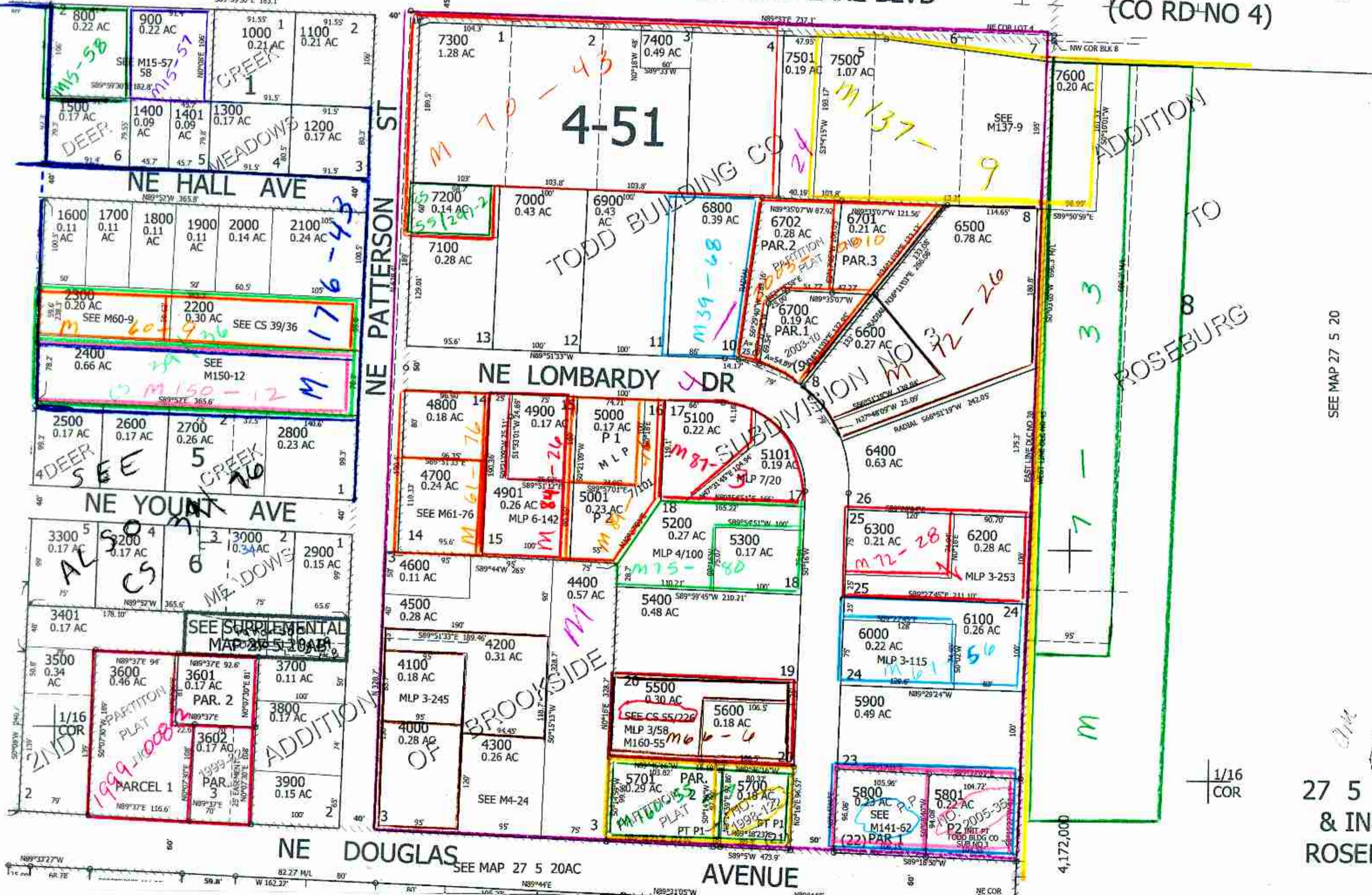
THIS MAP WAS PREPARED FOR ASSESSMENT PURPOSE ONLY.

NW1/4 NE1/4 SEC.20 T.27S. R.5W. W.M.
DOUGLAS COUNTY
1" = 100'

REVISED ON
7-31-17

27 5 20AB
& INDEX
ROSEBURG

CANCELLED NO'S
7601 7602 5702
3400 7300A1 2100



SEE MAP 27 5 20BA

SEE MAP 27 5 20

575,500

27 5 20AB
& INDEX
ROSEBURG

SEE MAP 27 5 17D